



In this Issue:

Bovine Tuberculosis in Canada	2
SCA Town Hall on TB	5
DFC Update	6
Scours Testing	7
Quota Exchange Results	10
Production Update	14
March Quality Bonus	17



THE CANADIAN PODCOW

By farmers, for farmers:
Spotlight on the Canadian Podcow

Details on page 6!

Bovine Tuberculosis in Canada: What Producers Need to Know

By Wendy Wilkins, DVM PhD

Bovine tuberculosis (bTB) isn't something most producers think about every day. Canada has done a solid job keeping it under control, but every now and then, a case pops up, reminding us why surveillance and traceability matter. If you're in the cattle business, you need to know how this disease spreads, what to do if you're caught up in an investigation, and why good record-keeping can save you a whole lot of headaches.

But let's not forget the human side of all this. Disease outbreaks and CFIA investigations can be stressful—on your bottom line, your herd, and your mental well-being. This article covers what you need to know to protect your herd and yourself.

What is Bovine Tuberculosis?

Bovine tuberculosis is caused by *Mycobacterium bovis*, a sneaky little bacteria related to human tuberculosis. It primarily affects cattle but can also infect wildlife, domestic animals, and in rare cases, humans. It spreads through respiratory droplets, contaminated feed or water, and unpasteurized milk.

The tricky part? Infected animals can carry the disease for years before showing symptoms—if they ever do. When symptoms do appear, they might include:

- Persistent coughing
- Weight loss and poor body condition
- Enlarged lymph nodes

Diagnosing bTB is no simple task. The main tools are skin tests, blood tests, and post-mortem exams, but none of them are perfect. Sometimes, an animal will test positive but have no visible signs of disease. Other times, a truly infected animal won't be caught right away. That's why the CFIA uses multiple tests and a risk-based approach to track it down.

Why Surveillance and Response Matter

One hundred years ago, bTB was widespread in Canada, threatening both animal and human health. A national control program was put in place, and by 1985 the country was declared bTB-free at the national level.

Canada has worked hard to earn and keep its bTB-free status, and that's not something we can now afford to lose. The reason is simple: trade.

Our export partners expect us to stay on top of bTB. If Canada lets cases go unchecked, it could lead to trade restrictions, hurting **not just the affected farms, but the entire beef industry.**

Surveillance programs—like routine checks at slaughterhouses and on-farm testing—help catch cases before they spread. If bTB is detected, CFIA steps in fast, quarantining affected herds and testing all animals that could have been exposed.

Yes, it's frustrating. No one wants to deal with a quarantine, testing, or worst case, herd depopulation. But stamping out bTB when it's found is the price we pay to keep the disease from taking hold again. The alternative—letting it spread—would be far worse.

Without control measures, bTB spreads unchecked, leading to increased cattle deaths, reduced milk and meat production, and significant economic losses. Globally, over 50 million cattle are infected, causing approximately \$3 billion in annual losses.

In some African regions, infection rates reach up to 50%, severely impacting productivity. Attempting to "live with" bTB isn't viable; the disease's toll on herd health and profitability is too great. Proactive surveillance and eradication are essential to protect livestock and livelihoods.

The Importance of Traceability

If a case of bTB is found in Canada, traceability is what keeps the investigation focused and efficient. Good records help CFIA quickly determine which herds are at risk and which ones can be left alone.

The 2016 Alberta outbreak is a perfect example. Some producers had detailed records of every animal movement, which helped CFIA rule out parts of their herd from depopulation. Others weren't so lucky, and without solid records, more cattle were assumed to be at risk than necessary.

In short, good traceability can mean the difference between losing a few animals or your whole herd.

What Records Do You Need for an Investigation?

If CFIA ever knocks on your door about a bTB case, they'll ask for specific records. Here's what you need to have ready:

- Animal movement records – Any purchases, sales, or movements of cattle in or out of your herd in the last five years.
- Premises Identification (PID) number – Make sure your farm is registered and updated.
- Herd contact history – Did your cattle graze on community pastures? Share fence lines with other herds? Buy or sell breeding stock?
- Health records – Past TB tests, veterinary visits, disease history, vaccination records.
- Animal identification – CCIA tags must be up to date. If animals were moved, where did they go and when?

Even if you never deal with a TB case, keeping these records up to date is just good business.

How to Keep Excellent Traceability Records

No one wants to think about disease investigations, but the reality is good records help in all sorts of situations—not just for bTB but for everything from market access to herd management.

- Use an electronic record-keeping system – Even a simple spreadsheet helps keep things organized.
- Keep PID numbers up to date – CFIA and industry rely on them to track disease cases.
- Report all cattle movements – This helps investigations move quickly and prevents unnecessary quarantines.
- Be diligent about CCIA tags – Proper tagging and records make it easy to trace an animal's history.
- Document all vet visits and health events – If something looks suspicious down the road, you'll have proof of what happened.

Don't Ignore Your Mental Health

Let's be real: dealing with a bTB investigation is stressful. The uncertainty, financial strain, and emotional toll of watching your herd go through testing—or worse, depopulation—can weigh heavily on any producer.

But you don't have to go through it alone. There are real supports available for farmers who need them:

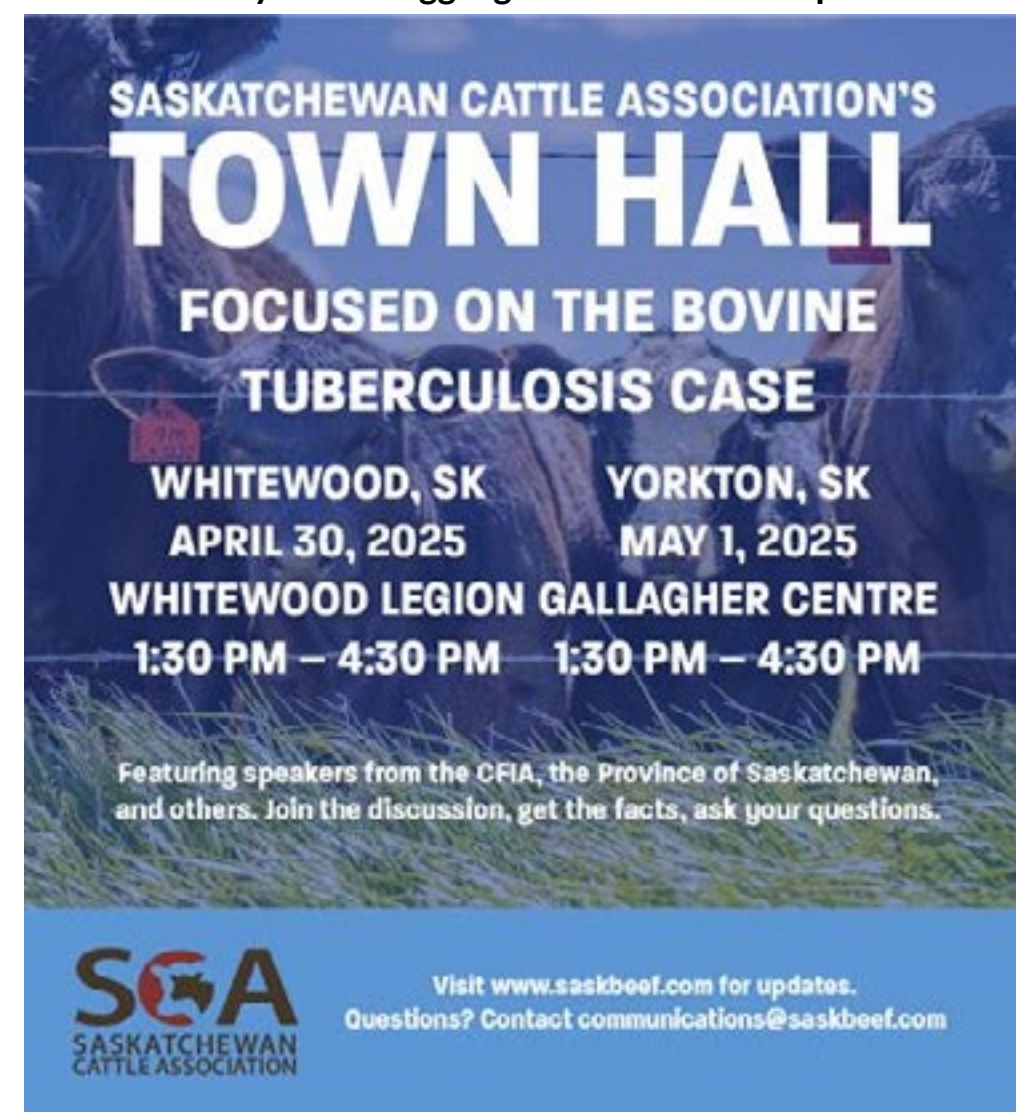
- Farm Stress Line (Saskatchewan): Call 1-800-667-4442 anytime, day or night. Online message and email support are also available.
- National Farmer Wellness Network: A Canada-wide support line for producers at 1-866-FARMS01 (1-866-327-6701).
- Sask Ag Matters: Offers six free hours of counseling per person per year for producers, their families, and ag workers.

If you're feeling overwhelmed, reaching out isn't a sign of weakness—it's a sign of strength. Your farm, your family, and your community need you to be okay, and there are people ready to help.

Final Thoughts

Bovine tuberculosis isn't going away anytime soon, but Canada has the tools to keep it under control. Surveillance, traceability, and rapid response are what protect the beef industry, and every producer has a role to play.

If there's one takeaway here, it's this: **Don't wait until there's a problem to get your records in order. And don't wait until you're struggling to reach out for help.**



SASKATCHEWAN CATTLE ASSOCIATION'S
TOWN HALL
FOCUSED ON THE BOVINE
TUBERCULOSIS CASE

WHITEWOOD, SK	YORKTON, SK
APRIL 30, 2025	MAY 1, 2025
WHITEWOOD LEGION GALLAGHER CENTRE	
1:30 PM – 4:30 PM	1:30 PM – 4:30 PM

Featuring speakers from the CFIA, the Province of Saskatchewan, and others. Join the discussion, get the facts, ask your questions.

SCA
 SASKATCHEWAN
 CATTLE ASSOCIATION

Visit www.saskbeef.com for updates.
 Questions? Contact communications@saskbeef.com

DFC Update

By farmers, for farmers: Spotlight on the Canadian Podcow

The Canadian Podcow is a podcast hosted by dairy farmers, for dairy farmers. Hosts Andrew Campbell, a dairy farmer from Southern Ontario, and Sarah Sache, a dairy farmer from B.C., tackle important topics that are relevant to dairy farming, including market analysis, outlooks, and trends. In 2024, the Canadian Podcow was selected amongst the Top 15 Canadian Agriculture Podcasts by Feedspot!

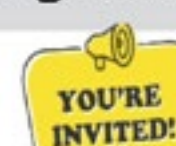
Listen to the latest episodes of the Canadian Podcow for a deep dive into the topics and presentations from DFC's 2025 Annual Dairy Policy Conference (ADPC)! The hosts were live on location at the ADPC in Ottawa, holding in-depth interviews and insightful conversations with presenters on the hot topics of today.

Listen to the Secretary General of the European Dairy Association, Alexander Anton, speak on dairy from a European perspective; DFC Chief Marketing and Communications Officer Pamela Nalewajek talk about how "buying Canadian" can positively impact dairy; and DFC's Julia Trottier and Maxime Collette provide an outlook on the dairy market for 2025.

Listen now at CanadianPodcow.ca



What is causing scours in your calves?



WHY IS IT IMPORTANT?

- Scours is a serious disease of calves
- Rotavirus, coronavirus, *E. coli*, coccidiosis and *Clostridium perfringens* play a role, but we don't have recent information on which specific strains are affecting calves in Western Canada.

WHAT DO WE NEED?

Fecal samples from:

- Scouring calves collected before any treatment
- Healthy calves from non-scouring, untreated calves.

A manual will be provided

IF YOU WISH TO PARTICIPATE, IT IS FREE!



We will provide you a sampling box that will contain:

- Sample forms
- Sampling containers
- Shipping material and information



- Collect the faeces in the cups
- While taking the sample, you can fill the history and description for the calf on the sample form
- Don't forget to add your contact details so we can give you the results



Add the shipping details and ship the samples.



We will identify the pathogen (bacteria, virus, parasites) that is causing the disease and will pass the information to you

Contact us!

Frank van der Meer

✉ frank.vandermeer@ucalgary.ca

☎ (403) 992 4678

Aayush Poudel

✉ aayush.poudel@ucalgary.ca

☎ (403) 436 0816



ARE YOU READY FOR A POTENTIAL CANADA POST STRIKE?

**Review your DairyTrace tag inventory
and place your order now.**

Following the 2024 strike, there are ongoing negotiations between Canada Post and its union. There is a significant possibility of a second strike starting May 22, 2025. To prepare for this risk, **it is recommended that dairy farmers ensure they have at least a 4-month supply of tags on farm**, enough to last to the end of the summer.

Not sure if you'll need more dual or single button tags?
We recommend ordering now to guarantee you'll have what you need.

To ensure timely delivery ahead of the possible strike:

**Be prepared. Take action now and order
DairyTrace tags before the end of April.**

There are multiple options for ordering tags:

- Directly through your DairyTrace account
- DairyTrace Customer Services
1-866-558-7223 | tags@dairytrace.ca | mail in paper order forms
- Holstein Canada WebServices account

If you live in Quebec, order from Attestra through your SimpliTRACE Account
OR phone: 1-866-270-4319 or 1-450-677-1757

**Visit our website for more information:
www.dairytrace.ca/order-tags/**



Saskmilk Board Activities

April/May

April 16-17	PLQ AGM
April 24	WMPAC
Apr 25	DIW
April 29-30	SaskMilk Board Meeting
May 6th P10	Strategic Session with Chairs and GMs
May 7-8	DFC Board Meeting
May 21-22	SaskMilk Board Meeting

Quota Exchange

The market-clearing price established for the April 2025 Quota Exchange was

\$39,750.00

The next Quota Exchange will be held on **May 15, 2025**. All offers to sell and bids to purchase quota through the Quota Exchange must be submitted by midnight, **May 6, 2025**. SaskMilk recommends that offers and bids be submitted well in advance of the deadline date to ensure adequate time for corrections, if necessary.

When making bids on the Quota Exchange, the price on offers to sell quota is the minimum price that the producer is prepared to accept for that quota. Only if the market-clearing price is equal to or greater than the producer's minimum price will that producer qualify for participation in the Exchange.

Conversely, the price on offers to purchase quota is the maximum price that the producer is prepared to pay for that quota. Only if the market-clearing price is equal to or less than the producer's maximum price will that producer qualify for participation in the Exchange.

The clearing price is set at the price where the smallest difference exists between the accumulated volume offered for sale and the accumulated volume bid to purchase. The results of the Quota Exchange are outlined in the following table.

APRIL 2025 QUOTA EXCHANGE RESULTS

Market Clearing Price per Kilogram of Butterfat	\$39,750.00
Daily Kilograms Offered to Purchase	90.00
Kilograms Offered to Sell	247.81
Kilograms Sold	46.89
Number of Producers	
- offered to purchase	9
- purchased quota	8
- offered to sell	13
- sold quota	4

APRIL 2025 QUOTA EXCHANGE CLEARING PRICE RESULTS

Price (\$/daily kg b.f.)	No. of Sellers	Cumulative Sellers	Daily Kgs b.f. offered for sale	Cumulative sales	Cumulative Sales less Cumulative purchases	Cumulative purchases	Daily Kgs b.f. offered to purchase	Cumulative bidders	No. of buyers
\$35,325.00	0	0	0.00	0.00	-90.00	90.00	10.00	9	1
\$36,144.00	1	1	0.89	0.89	-79.11	80.00	0.00	8	0
\$39,000.00	1	2	11.00	11.89	-68.11	80.00	0.00	8	0
\$39,500.00	1	3	10.00	21.89	-58.11	80.00	0.00	8	0
\$39,750.00	1	4	25.00	46.89	-33.11	80.00	0.00	8	0
\$40,000.00	5	9	75.92	122.81	42.81	80.00	0.00	8	0
\$40,500.00	1	10	25.00	147.81	67.81	80.00	10.00	8	1
\$40,525.00	0	10	0.00	147.81	77.81	70.00	10.00	7	1
\$41,000.00	0	10	0.00	147.81	87.81	60.00	10.00	6	1
\$41,100.00	0	10	0.00	147.81	97.81	50.00	10.00	5	1
\$41,105.00	0	10	0.00	147.81	107.81	40.00	10.00	4	1
\$41,210.00	0	10	0.00	147.81	117.81	30.00	10.00	3	1
\$41,315.00	0	10	0.00	147.81	127.81	20.00	10.00	2	1
\$42,000.00	1	11	50.00	197.81	187.81	10.00	0.00	1	0
\$43,217.00	0	11	0.00	197.81	187.81	10.00	10.00	1	1
\$44,000.00	1	12	30.00	227.81	227.81	0.00	0.00	0	0
\$45,000.00	1	13	20.00	247.81	247.81	0.00	0.00	0	0

TRANSFER CREDIT SUMMARY REPORT

MONTH	# OF PRODUCERS TRANSFER IN	# OF PRODUCERS TRANSFER OUT	TOTAL KGS OF BUTTERFAT
March 2024	12	12	8,760.00
April 2024	13	13	11,572.00
May 2024	17	17	10,764.00
June 2024	15	15	10,573.00
July 2024	19	19	12,689.00
August 2024	19	19	11,750.00
September 2024	20	20	10,329.00
October 2024	18	18	13,058.00
November 2024	27	27	32,337.00
December 2024	21	21	20,071.00
January 2025	11	11	4,380.00
February 2025	14	14	11,074.00
March 2025	10	10	6,693.00

PRIVATE TRANSFERS PROCESSED

MONTH	DAILY KILOGRAMS
March 2024	3.00
April 2024	0.00
May 2024	0.00
June 2024	91.97
July 2024	0.00
August 2024	75.71
September 2024	0.00
October 2024	6.87
November 2024	0.00
December 2024	0.00
January 2025	0.00
February 2025	0.00
March 2025	5.00

OVER QUOTA (OVER 5 DAYS) REPORT BY MONTH

MONTH	# OF PRODUCERS	KGS BUTTERFAT
March 2024	18	1,367
April 2024	16	1,336
May 2024	14	1,171
June 2024	13	1,329
July 2024	5	379
August 2024	1	14
September 2024	0	0
October 2024	6	338
November 2024	3	155
December 2024	7	764
January 2025	3	517
February 2025	2	86
March 2025	5	189

SUMMARY REPORT OF CREDITS MARCH 2025 - 143 PRODUCERS

DAYS	# OF PRODUCERS	POSITIVE CREDITS ACCUMULATED (KGS OF BFAT)
+ 5	5	2,204
0 to + 5	49	28,093
TOTAL	54	30,297
DAYS	# OF PRODUCERS	NEGATIVE CREDITS ACCUMULATED (KGS OF BFAT)
0 to -5	45	27,413
-5 to -10	27	71,665
-10 to -15	15	40,561
-15	2	1,761
TOTAL	89	141,400

LOST OPPORTUNITY REPORT

MONTH	# OF PRODUCERS	LOST OPPORTUNITY (KGS OF BUTTERFAT)
March, 2024	1	375
April 2024	1	318
May 2024	1	389
June 2024	2	548
July 2024	1	1,212
August 2024	2	1,226
September 2024	4	2,166
October 2024	3	1,030
November 2024	3	596
December 2024	1	467
January 2025	1	489
February 2025	1	388
March 2025	2	350

WEIGHTED AVERAGE COMPONENT TESTS & PRICES FEBRUARY 2025

COMPONENTS	AVERAGE TEST	PRICE PER KILOGRAM CLASS 1 TO 5
Butterfat	4.4736	\$18.597751
Protein	3.3827	\$2.893585
Other Solids	5.9170	\$0.827124

The average butterfat price received per kilogram was
\$21.88

Milk Sale Revenue
\$24,983,139.01

WMP Revenue/<Expense
< \$471,599.16 >

Total Revenue
\$25,454,738.17

Quality Bonus:

WMP Quality Bonus \$0.001580
SaskMilk Quality Bonus \$0.000262

Total Quality Bonus Rate March 2025
\$0.001842 per litre



Farm Stress Line
SASKATCHEWAN
Made Possible by CN

**Providing support when you need it
the most, available 24 Hours, Days a
week. CALL 1-800-667-4442**

Farm Stress Line was initiated and funded by the Ministry of Agriculture in 1992. The Ministry of Agriculture contracted with MCS Inc. in 2012 to administer and provide crisis counselling to rural Saskatchewan. This change provides a 24hr 7 days a week response through a 1-800 toll free phone line with a proven expertise in crisis counselling.

Mobile Crisis Services, Inc. is a non-profit community-based organization that has been providing crisis intervention services to Regina and the province of Saskatchewan since 1974. The overall purpose of the agency is to provide integrated and comprehensive social and health crisis intervention services.

Mobile Crisis Services is governed by a volunteer Board of Directors. These volunteers contribute a significant amount of time to assist in the direction of programs and services for youth, individuals, families and seniors.

Services are provided on a 24-hour, seven day a week basis, in order to assure accessibility regardless of the time of day. The agency was formulated on the philosophy of "where services should be provided, they will be provided." The agency represents an innovative approach to crisis intervention and is an integral part of the health and social service delivery systems. Mobile Crisis Services is committed to community health and the development of supportive communities. For more information, visit:

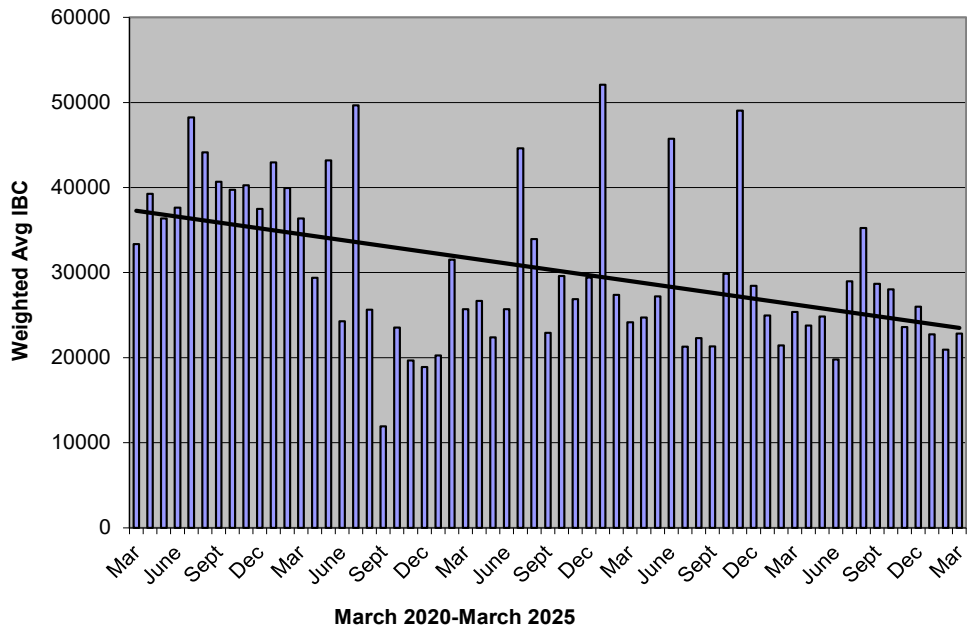
<https://farmstressline.ca/>

	(1) Monthly Total Production Kgs of bf	(2) Total Monthly CDC Quota Allocation Kgs bf	(3) Monthly Over or (Under) Production Kgs bf col. 1 - 2 = 3	(4) Lower Flexibility Limit -2.00% Kgs bf col. 8 * -1.5%	(5) Upper Flexibility Limit 1.25% Kgs bf col. 8 *1.0%	(6) Cumulative Over or (Under) Production with limits Kgs bf	(7) Cumulative Over or (Under) Production with limits (%) col. 6 / 8	(8) Rolling 12 Month Total Quota Kgs bf
Mar-24	1,032,842	1,119,876	(87,034)	-251,106	156,941	1,137,934	9.06%	12,555,295
Apr-24	1,022,410	1,041,523	(19,113)	-252,151	157,594	1,118,822	8.09%	12,607,550
May-24	1,057,676	1,062,316	(4,640)	-253,989	158,743	1,015,772	8.00%	12,699,454
Jun-24	1,020,005	1,023,800	(3,795)	-255,018	159,386	1,011,977	8.07%	12,750,883
Jul-24	1,054,317	1,034,623	19,694	-255,860	159,912	1,048,972	8.20%	12,792,984
Aug-24	1,080,448	1,139,872	(59,424)	-256,747	160,467	989,548	7.90%	12,837,330
Sep-24	1,060,441	1,119,990	(59,549)	-255,026	159,391	954,132	7.48%	12,751,284
Oct-24	1,122,537	1,226,912	(104,375)	-257,846	161,154	849,757	6.59%	12,892,308
Nov-24	1,093,664	1,104,566	(10,902)	-257,662	161,039	838,854	6.51%	12,883,108
Dec-24	1,145,246	1,114,591	30,655	-259,417	162,136	869,509	6.70%	12,970,843
Jan-25	1,150,872	1,052,104	98,768	-260,778	162,986	968,277	7.55%	13,038,886
Feb-25	1,049,628	938,309	111,319	-259,570	162,231	1,096,164	8.45%	12,978,482
Mar-25	1,163,583	1,042,469	121,114	-258,022	161,263	1,217,278	9.44%	12,901,075

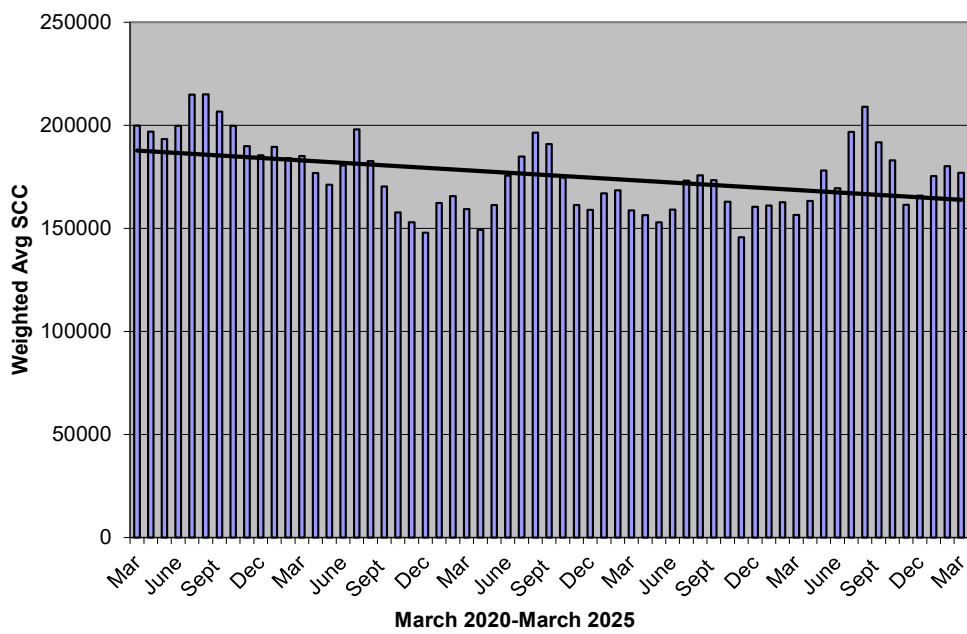
In **March**, Saskatchewan had a monthly CDC allocation of **1,042,469 kgs** of butterfat. Saskatchewan production was **121,114 kgs** of butterfat over and cumulatively over by **1,217,278 kgs** of butterfat. On a percentage basis, Saskatchewan is **9.44%** above our CDC allocation flexibility limits based on the Continuous Quota model. The -2.00% lower flexibility limit is in effect.

- (1) Monthly Production in Saskatchewan
- (2) Total Monthly Quota = Class 1 sales + Monthly MSQ + Carry Forward
- (3) Difference between the monthly production (1) and the total monthly quota (2)
- (4) The Lower Flexibility Limit is -2.00% of Rolling 12 Month Total Quota (9)
- (5) The Upper Flexibility Limit is 1.25% of Rolling 12 Month Total Quota (9)
- (6) Previous Month Cumulative Over or (Under) Production + Current Monthly Over or (Under) Production (capped at lower or upper limit if applicable)
- (7) Equal to Column (6) expressed as a percentage basis within the flexibility limits
- (8) Total Monthly CDC Quota Allocation for the previous 12 months

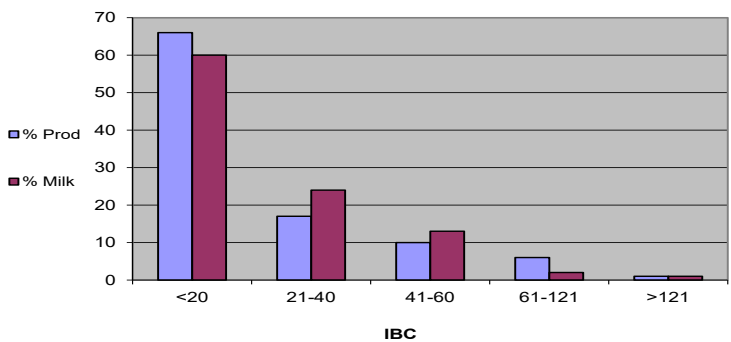
Monthly Weighted Average IBC



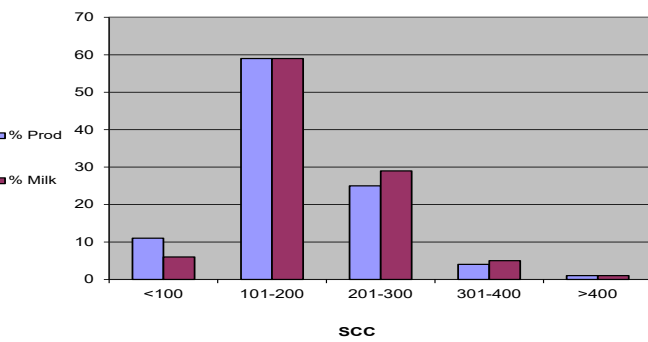
Monthly Weighted Average SCC



March 2025



March 2025



March 2025 Quality Bonus

101115806 SASKATCHEWAN LTD.***	DAUM DAIRIES***	HUTTERIAN BRETH OF PENNANT INC.***	KIELSTRA HOLSTEINS INC.***	SCOTT COLONY***
ADIT FARMS INC.***	DE TIPPE DAIRY*	HUTTERIAN BRETHREN CHURCH OF EAGLE CREEK INC.***	KNITTIG FARMS LTD.***	SIERRA HUTTERIAN BRETHREN***
ARTLAND DAIRIES INC***	DIAMOND HOLSTEINS LTD.***	HUTTERIAN BRETHREN CHURCH OF LAJORD**	LAKEVIEW COLONY***	SIMMIE HUTTERIAN BRETHREN CHURCH***
AURORA DAIRY INC.***	DOWNIE LAKE CHURCH COLONY***	HUTTERIAN BRETHREN CHURCH OF QUILL LAKE LTD.***	LAKEVIEW HOLSTEINS INC.***	SMILEY HUTTERIAN BRETHREN***
BAILDON HUTT BRETHREN INC.***	EAGLEWOOD HOLDINGS LTD***	HUTTERIAN BRETHREN CHURCH OF SOUTHLAND INC.***	LEYENHORST, ALBERT & HEATHER***	STAR VALLEY FARM JOINT VENTURE***
BALGONIE HOLSTEINS LTD.***	EARVIEW COLONY**	HUTTERIAN BRETHREN CHURCH OF SPRING LAKE INC.***	LOVHOLM HOLSTEINS***	SUNNYSIDE DAIRY***
BENBIE HOLSTEINS LIMITED**	EATONIA HUTTERIAN BRETHREN INC***	HUTTERIAN BRETHREN CHURCH OF TWIN CREEK INC.***	MAIN CENTRE DAIRY FARM***	The Hutterian Brethren Church of Riverview Limited***
BENCH HUTTERIAN BRETHREN LTD***	ELL'S DAIRY FARM 2010 INC.**	HUTTERIAN BRETHREN CHURCH PONTEIX***	MARFAY FARMS LIMITED***	TOM & WENDY MUFFORD***
BLU J FARMS***	ENNS FARMS LTD***	HUTTERIAN BRETHREN CYPRESS COLONY**	NIENHUIS FAMILY FARM INC.***	UNIV OF SASK, Animal & Poultry Science**
BRAMVILLE JERSEYS***	FEHR'S RIVERFRONT FARM LTD.**	HUTTERIAN BRETHREN OF DINSMORE***	Osler Dairy Farms Ltd.*	VANGUARD HUTTERIAN BRETHREN***
BROYHILL HOLSTEINS***	FOTH VENTURES LTD**	HUTTERIAN BRETHREN OF ESTUARY CORP.***	PLUM BLOSSOM FARM LTD.(SASK)***	VANZESSEN DAIRY INC.***
BRUINSDALE FARMS LTD.***	FOX VALLEY FARMING CO. LTD***	HUTTERIAN BRETHREN OF KYLE***	PRAIRIE WEST DAIRIES INC.***	W.C.C. DAIRIES CORP.***
BUTTE COLONY***	GLIDDEN HUTTERIAN BRETHREN***	HUTTERIAN BRETHREN OF MILDEN INC.***	Q VALLEY FARM LTD.***	WALDECK HUTTERIAN BRETHREN***
CARMICHAEL HUTTERIAN COLONY**	Grassy Hill Colony***	HUTTERIAN BRETHREN OF WEST BENCH***	R & F LIVESTOCK INC.***	WALLYWAY FARMS LTD.***
CARONCREST FARMS LTD***	HAVERLAND DAIRY LTD.**	J & J BOOT DAIRY LTD. #2***	RICHARD VAN DONGEN & LORETTA BERKHOUT- VAN DONGEN***	WESTERN DAIRY FARMS (2016) LTD. #1**
CHRIS-ADIE HOLSTEINS LTD.**	HIDDEN HILL DAIRY LTD.**	JAYLEE FARMS INCORPORATED***	RIVER VALLEY HOLSTEINS LTD.***	WESTWIKK FARMS***
CLEAR SPRING COLONY***	HIGHDALE FARMS LTD.***	JBK FARMS LTD.***	RIVERSIDE DAIRY LTD.***	WHEATLAND HUTT BRET OF CABRI INC***
CORNELIUS & TRACY WIEBE***	HUTT BRET CHURCH OF SWIFT CURRENT INC***	JIMLEE FARMS LTD.***	ROSETOWN FARMING CO. LTD.***	WILLOW PARK COLONY***
COUNTRY HILLS HUTTERIAN BRETHREN INC.***	HUTTERIAN BRETH CHURCH OF BEECHY***	KEN & KAREN GIESBRECHT**	RYDALL LIVESTOCK LTD.**	
CRAILA DAIRY LTD***	HUTTERIAN BRETH CHURCH SPRING CREEK***	KENSTAL FARMS INC.*	SAND LAKE HUTTERIAN BRETHREN***	
DALVOORDE DAIRIES LTD.***	HUTTERIAN BRETH CHURCH SPRINGWATER***	KESSEL FAMILY FARM***	Sandy Ridge Dairy Ltd.**	



Who Should I Call?

Who at the SaskMilk office should producers call?
Here's a handy guide!



FOR	CALL	AT
<ul style="list-style-type: none">Quota Exchange and Private Quota TransfersLeasesTransfer CreditsSecurity ApplicationsProjections for productionName ChangesDesignation of Signing AuthorityMonthly production numbers for producers	Bev Solie	306-721-9488
<ul style="list-style-type: none">Sponsorship RequestsDonation RequestsDairyanna's Costume and EventsSchool Milk ProgramNutrition Resource OrderingSocial media enquiries (Twitter, Instagram, Facebook)Promotional Items	Breann Eberle	306-721-9483
<ul style="list-style-type: none">Website enquiriesNewsletter advertisingSponsorship RequestsDairy Conference	Cailyn Jones	306-540-3639
<ul style="list-style-type: none">On Farm- licensing, facilities, equipment, driveways, yards, animal careBulk truck drivers- licensing, complaints/issuesBulk tank calibrationsRayner Dairy Centre & ResearchEnvironment and Regulatory	Chris Pinno	306-721-9494
<ul style="list-style-type: none">Monthly milk prices paid to producersProvincial & National production updates	Doug Miller	306-721-9485
<ul style="list-style-type: none">SaskMilk Portal AssistanceWebsite enquiriesDairy ConferenceProducer statementsBanking info for direct deposit of milk payMilk pick-up issues -variances in volumes, planning to quit shipping, etc	Jenn Buehler	306-721-9492
<ul style="list-style-type: none">PolicyMedia or news stories or if you have been contacted by any media agency or reporter	Anne Lindemann	306-570-1151
<ul style="list-style-type: none">On Farm- licensing, facilities, equipment, driveways, yards, animal careLab testing resultsPro Action- Food Safety (CQM), Animal Care, Traceability, Biosecurity, EnvironmentExtension services	Tina Leverton	306-721-9486

Classifieds

SaskMilk offers a free classifieds service as part of its newsletter. Anyone wishing to place an ad is welcome to contact the SaskMilk office at (306) 949-6999 or info@saskmilk.ca. All negotiations will be independent of SaskMilk. Please note that ads will be posted in two issues and will then be removed unless SaskMilk is notified otherwise.



SaskMilk Board & Executive Director

- Teresa Florizone**
Executive Director
(306) 721-9480
Cell: (306) 527-7458
teresa.florizone@saskmilk.ca
- Gordon Ell**
Chair
(306) 535-1922
gt.ell@sasktel.net
- Merlis Wiebe**
(306) 229-0696
merlisw@gmail.com
- Melvin Foth**
(306) 232-3462
mel.foth56@gmail.com
- Tymen Vanzessen**
(306) 361-7551
tymenvanzessen@hotmail.com
- Derek Westeringh**
(306) 716-1959
derekw@westbow.ca
- Leonard Wipf**
(306) 491-0432
leonard.countryclover@gmail.com

Reminder!

The deadline date for Quota Transfer, Quota Exchange, and 10% Transfer Limit Exemptions is the 6th of each month

Your Quota Transfer, and 10% Exemption Applications must be received on or before the 6th of the month in order to be effective the 1st of the following month
Quota Exchange forms must be received in the SaskMilk office on or before the 6th of the month for that month's Exchange.

