

# Saskmilk

## December

### 2024



## In this Issue:

In Memory	...	2
Rayner Dairy Report	...	3
2024 Dairy Conference	...	5
Conference Sponsors	...	7
Agribition	...	9
DFC Update	...	11
Quota Exchange Results	...	14

## 2024 SASKATCHEWAN DAIRY CONFERENCE



### "The Future of Dairy"

Thank you to everyone who joined us for the 2024 Dairy Conference in Saskatoon on November 19-20! It is always wonderful to gather in person to recap the past year and plan for the year ahead in the Saskatchewan dairy sector.

A very special thanks to the Saskatchewan Holstein Branch for a wonderful social evening of awards, video presentations and a successful silent auction with a large array of spectacular auction items.

In addition to the SaskMilk and Saskatchewan Holstein Branch AGMs, an informative Processor Speaker Session was held with speakers Xiaoyan Chen (Vitalus), Catherine Tokarz (Saputo) and Dan Wong (Western Dairy Council), each sharing their experiences in the industry. Thank you to Western Milk Pool's Nolan Berg for facilitating the session.

Elaine Pruiem from Cat's Creamery was on hand in the mezzanine serving up ice cream samples for a bonus treat!

As always, we extend a big thank you to our sponsors for their support of our industry – please see the complete list of sponsors on page 7.

## Holiday Office Hours

December 24	8 a.m. - 12 p.m.
December 25	Office closed
December 26	Office closed
December 27	Office closed
December 30	Office closed
December 31	Office closed
January 1	Office closed

## Holiday Lab Hours

(no testing)

December 25	Lab closed
January 1	Lab closed



## In Memory of Darlene Weighill

*Darlene Weighill passed away unexpectedly on Saturday, November 30th. Darlene started in the dairy industry at Alpha Milk in Red Deer, Alberta and later moved to Regina to work in the butter powder evaporation area following the merger with DairyWorld Foods.*

*In 1998, Darlene left DairyWorld to work at the Saskatchewan Dairy Foundation, which later became Dairy Farmers of Saskatchewan. In October of 2010, Dairy Farmers of Saskatchewan and the Milk Control Board became SaskMilk, where Darlene held the position of Financial Officer for the following 14 years.*

*Darlene was an avid Saskatchewan Rider fan - never missing a game - and a dedicated volunteer with numerous hours spent volunteering for organizations like the Regina Red Sox.*

*Everyone who knew Darlene knew how important family was to her, and the wonderful stories she told about her family and connection to Frontier, SK, were always welcome and enjoyed.*

*Darlene will be deeply missed by the SaskMilk office and all who knew her.*




## RAYNER DAIRY REPORT

### Boosting Colostrum Production through Dry Period Nutrition

By Dr. Koryn Hare and Dr. Greg Penner

Colostrum is the key to giving calves a head-start in life and the better the colostrum quality, the better the outcomes for their preweaning and lifelong performance. High quality colostrum, defined as having an immunoglobulin G (IgG) concentration >50 g/L, is vital to transfer enough antibodies to newborn calves in 4 L (equating to a minimum of 200 g IgG fed). When calves are fed less than 200 g of IgG or are fed too late (>2 to 6 h), they don't absorb enough antibodies from colostrum and are more likely to become sick, have higher mortality risk, and reduced growth and feed efficiency before they are weaned. While these benchmarks and outcomes for colostrum management are well-established, producers can find themselves in a bind when their cows produce colostrum with low IgG concentrations or insufficient volume.

Average colostrum yield has been estimated at 4 to 5 kg, but values as low as 0 and over 15 kg have been reported. From research at Cornell University, it is more common that dairy cows will produce too little colostrum (<6 kg, based on the amount of colostrum needed to provide two feedings to newborn calves) rather than adequate volume with approximately 70% of heifers and 60% of cows not producing enough. With respect to colostrum quality, 16 to 58% of cows have colostrum IgG concentrations less than 50 g IgG/L meaning that, on a herd basis, producers could anticipate that only 10 to 40% of the colostrum will be sufficient in IgG concentration.

There has been substantial interest to pinpoint the factors that influence colostrum production and how management practices can support cows to produce adequate quantities of good quality colostrum. It is well known that, on average, heifers produce less colostrum than cows, but their colostrum has a higher IgG concentration. Colostrum production is influenced by season as cows tend to produce more colostrum in the spring and summer and less colostrum in fall and early winter. Other factors are intuitive, such that colostrum yield and composition (in terms of total solids, fat, protein, and lactose concentration) have a genetic component and are heritable amongst families of cows. However, there are factors that are less straightforward. For instance, cows that are pregnant with female calves produce less colostrum and carrying a female calf is a risk factor for producing no colostrum immediately at calving. Additionally, the prior 305-d milk yield and length of the dry period can also influence colostrum production. Cows that produce more milk during the preceding lactation will produce more colostrum with a lower IgG concentration at calving. Colostrum yield is also increased when cows have longer dry period before calving. In fact, a dry period less than 60 days increases the risk that cows will produce less than 4 L of colostrum, and when the dry period is less than 47 days, cows are at risk of producing no colostrum at all. Longer dry periods are also associated with more fat and less lactose in colostrum, but IgG concentration is not influenced. There is undoubtedly clear cross-association among some of these factors, but many cannot be controlled (like parity or season) or are simply part of necessary management practices.



Nutritional programs can influence colostrum yield and composition. Dietary protein does not appear to influence colostrum yield, but there is some evidence to suggest that heifers may produce colostrum with a higher IgG concentration when they consume more metabolizable protein before calving. Irrespective of fat source, dietary fat concentration consistently reduces colostrum fat concentration and fat supplementation does not translate to an increase in colostrum yield, ultimately reducing the energy concentration. This response is something to keep in mind for winter months, when calves should consume more fat to support their metabolic requirements for heat production if exposed to cool or cold temperatures. Preliminary work also suggests that the source of dietary fat can affect colostrum IgG concentration. Authors have shown that fat sources which contain a high concentration of linoleic acid (a polyunsaturated, omega-6 fatty acid) can increase colostrum IgG concentration and, since yield is unaffected by dietary fat intake, a greater colostrum IgG yield is expected. Some good sources of linoleic acid are sunflower seeds, soybeans, soybean oil, and some sources of ruminal bypass fatty acids.

Lastly, in considering dietary starch concentration, there are some caveats that need to be recognized. Dietary starch has received a lot of emphasis because it increases colostrum yield in small ruminants (ewes and goats) and for beef cattle. However, for beef and dairy cattle, greater dietary starch concentration before calving reduces the colostrum IgG concentration, which may not be an issue if colostrum volume also increases. However, in dairy cattle, the research on colostrum volume is not as clear as colostrum yield increased when dietary starch concentration was between 18.6 to 22.5% DM, but decreased when dietary starch was either less than 18.5% DM or greater than 22.5% DM. Yet, four different controlled studies from several universities found no difference in colostrum yield from dairy cows that were fed dry diets that differed in starch concentration.

Body condition score and fat mobilization could be reasons why discrepancies are present between how beef and dairy cow colostrum production differs depending on the dietary starch concentration. However, while it is known that colostrum production is associated with BCS, researchers have yet to clarify how BCS and body fat mobilization interact with the dry diet to affect colostrum yield, quality, and composition. Ultimately, while there are numerous factors that affect colostrum production, altering nutrient supply in dry cow rations is likely the most feasible strategy to alter colostrum yield and composition.

**How do you apply this information?** While colostrum production may not be a major production goal considered by dairy producers, inadequate supply and quality impact management decisions, cost, and outcomes for newborn calves. In addition to parity and season, nutrition during the close-up period can affect colostrum yield and quality, with some types of fats having potential positive effects. Producers may also consider recording colostrum yield as a recordable outcome along with the IgG concentration measured using a colostrometer or brix meter. Measuring and documenting these outcomes can help identify on-farm factors affecting the yield and quality of colostrum.

Dr. Koryn Hare is a post-doctoral fellow working with Dr. Penner at the University of Saskatchewan. More information on the research can be obtained by email at [ksh249@usask.ca](mailto:ksh249@usask.ca)

This research was supported by SaskMilk, the Saskatoon Colostrum Company, Ltd., Alberta Beef Producers, and the National Science and Engineering Resource Council.

## 2024 SASKATCHEWAN DAIRY CONFERENCE



### Congratulations to the top producers in milk quality excellence!

#### IBC

5.213873	EARVIEW COLONY
5.418605	MAIN CENTRE DAIRY FARM
5.425287	LAKEVIEW HOLSTEINS LTD.
6.052941	FOX VALLEY FARMING CO. LTD
6.372093	101115806 SASKATCHEWAN LTD. (Shultz Family)
6.54386	CLEAR SPRING COLONY
6.691429	HIGHDALE FARMS LTD.
6.857605	SUNNYSIDE DAIRY
7.029412	ARTLAND DAIRIES INC
7.090116	ENNS FARMS LTD

#### SCC

67.70718	ARTLAND DAIRIES INC
68.0442	DAUM DAIRIES
72.8	SUNNYSIDE DAIRY
78.52537	LAKEVIEW HOLSTEINS LTD.
79.9162	WESTWIKK FARMS
85.41989	LOVHOLM HOLSTEINS
86.88827	EATONIA HUTTERIAN BRETHERN INC.
88.05525	CRAILA DAIRY LTD
89.95556	BRAMVILLE JERSEYS
90.27473	MAIN CENTRE DAIRY FARM

#### SCC COMBINED 75% IBC + 25%

22.19885	ARTLAND DAIRIES INC
23.42484	DAUM DAIRIES
24.77455	SUNNYSIDE DAIRY
25.42394	LAKEVIEW HOLSTEINS LTD.
7.82524	WESTWIKK FARMS
27.91	LOVHOLM HOLSTEINS
28.85968	EATONIA HUTTERIAN BRETHERN INC
29.66555	CRAILA DAIRY LTD
30.26797	BRAMVILLE JERSEYS
31.26424	MAIN CENTRE DAIRY FARM





Silent Auction



# 2024 SASKATCHEWAN DAIRY CONFERENCE



"The Future of Dairy"



## Thank you to our Sponsors

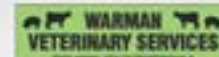
### PLATINUM



### GOLD



### SILVER



### BRONZE

### SUPPORTER



# CANADIAN WESTERN AGRIBITION



SaskMilk's Bre Eberle did a wonderful job creating and manning the tradeshow booth with help from Lynn Dore, Peggy Simank, Wanda Bouchard-Barry (above)





SaskMilk's Tina Leverton and Chris Pinno head-up butter making with eager students.

Tina brought along trusty heifer Greenbrae Gert to aid in visuals during her educational sessions.

## DFC Update

### Introducing DFC's new greenhouse gas calculator pilot project

Many Canadian dairy farmers want to measure their carbon footprints to learn how they can take practical individual action towards a more sustainable sector. To this end, Dairy Farmers of Canada (DFC) and the provincial associations are proud to announce the launch of a pilot project to test an on-farm greenhouse gas (GHG) emissions calculator.

The pilot project will determine whether this specific calculator, called the Cool Farm Tool (CFT), will provide accurate measurements within the Canadian dairy landscape, paint an accurate picture of our sector's sustainability, and assess its ease of use. The CFT is designed to help measure a farm's carbon footprint, provide farmers with data, and help them customize environmental plans and increase efficiencies.

Forty farms across Canada have volunteered to test this tool over the next year. These participants will benefit from the knowledge of CFT-certified advisors for ongoing technical support, assessment completion, and advice on how to turn results into an implementation plan that aligns with best management practices. Farmers will then evaluate their complete experience, including the CFT's usefulness and ease of use.

The pilot project will determine if the CFT provides accurate insights for Canadian dairy farmers; for instance, understanding where energy and transport emissions are highest can help farmers improve efficiencies and lower costs. The data from the project will then be compared to DFC's Life Cycle Assessment results and used to identify the most significant areas of on-farm emissions contributions. While the pilot project's focus is on carbon footprints, farmers can also use the CFT to voluntarily explore other desired sustainability projects, including identifying hotspots and mitigating risks beyond GHGs, such as water conservation and soil health.

DFC looks forward to updating our sector on the progress of this project.

This pilot project has been made possible through Agriculture and Agri-food Canada funding via the Sustainable Canadian Agricultural Partnership. For more information on DFC's sustainability partnerships, please visit [dairyfarmersofcanada.ca/sustainability](https://dairyfarmersofcanada.ca/sustainability)



# Winter Wonderland Presented by SaskMilk

Winter Wonderland, an annual community event supporting the Regina Food Bank took place November 24 - December 29, 2024. Presented by SaskMilk, the Conexus Arts Centre transforms into a dazzling winter landscape filled with beautifully decorated trees, sparkling lights, and festive decor. Visitors can enjoy holiday tours for a small donation, helping local families in need.



SaskMilk's Bre Eberle created a beautiful tree for the event, complete with cow print garland!

### Marketing

December 27	Saskatoon Blades Teddy Bear Toss
December 28, Jan 11, Jan 25	Saskatchewan Rush
January 10-11	U-Prairie Challenge (Regina Cougars vs. Saskatoon Huskies)
January 11	Regina Pats vs. Portland Winterhawks (Regina)
January (throughout)	Saskatoon Blades (Saskatoon)

### Board

December 19	SaskMilk Board Meeting
January 14-16	Dairy Farmers of Ontario AGM
January 29-30	Dairy Farmers of Nova Scotia AGM

## Quota Exchange

**The market-clearing price established for the December 2024 Quota Exchange was \$41,055.00.**

The next Quota Exchange will be held on **January 15, 2025**. All offers to sell and bids to purchase quota through the Quota Exchange must be submitted by midnight, **January 6, 2025**. SaskMilk recommends that offers and bids be submitted well in advance of the deadline date to ensure adequate time for corrections, if necessary.

When making bids on the Quota Exchange, the price on offers to sell quota is the minimum price that the producer is prepared to accept for that quota. Only if the market-clearing price is equal to or greater than the producer's minimum price will that producer qualify for participation in the Exchange. Conversely, the price on offers to purchase quota is the maximum price that the producer is prepared to pay for that quota. Only if the market-clearing price is equal to or less than the producer's maximum price will that producer qualify for participation in the Exchange. The clearing price is set at the price where the smallest difference exists between the accumulated volume offered for sale and the accumulated volume bid to purchase. The results of the Quota Exchange are outlined in the following table.

### DECEMBER 2024 QUOTA EXCHANGE RESULTS

Market Clearing Price per Kilogram of Butterfat	\$41,055.00
Daily Kilograms Offered to Purchase	110.14
Kilograms Offered to Sell	17.83
Kilograms Sold	7.83
Number of Producers	
- offered to purchase	12
- purchased quota	1
- offered to sell	3
- sold quota	2

### NOVEMBER 2024 QUOTA EXCHANGE CLEARING PRICE RESULTS

Price (\$/daily kg b.f.)	No. of Sellers	Cumulative Sellers	Daily Kgs b.f. offered for sale	Cumulative sales	Cumulative Sales less Cumulative purchases	Cumulative purchases	Daily Kgs b.f. offered to purchase	Cumulative bidders	No. of buyers
\$36,540.00	1	1	0.83	0.83	-109.31	110.14	0.00	12	0
\$40,000.00	1	2	7.00	7.83	-102.31	110.14	5.14	12	1
\$40,155.00	0	2	0.00	7.83	-97.17	105.00	10.00	11	1
\$40,311.00	0	2	0.00	7.83	-87.17	95.00	10.00	10	1
\$40,550.00	0	2	0.00	7.83	-77.17	85.00	10.00	9	1
\$40,600.00	0	2	0.00	7.83	-67.17	75.00	5.00	8	1
\$40,729.00	0	2	0.00	7.83	-62.17	70.00	10.00	7	1
\$40,810.00	0	2	0.00	7.83	-52.17	60.00	10.00	6	1
\$40,860.00	0	2	0.00	7.83	-42.17	50.00	10.00	5	1
\$40,910.00	0	2	0.00	7.83	-32.17	40.00	10.00	4	1
\$40,915.00	0	2	0.00	7.83	-22.17	30.00	10.00	3	1
\$41,000.00	0	2	0.00	7.83	-12.17	20.00	10.00	2	1
<b>\$41,055.00</b>	<b>0</b>	<b>2</b>	<b>0.00</b>	<b>7.83</b>	<b>-2.17</b>	<b>10.00</b>	<b>10.00</b>	<b>1</b>	<b>1</b>
\$42,000.00	1	3	10.00	17.83	17.83	0.00	0.00	0	0

### TRANSFER CREDIT SUMMARY REPORT

MONTH	# OF PRODUCERS TRANSFER IN	# OF PRODUCERS TRANSFER OUT	TOTAL KGS OF BUTTERFAT
November 2023	14	14	12,364.00
December 2023	15	15	8,349.00
January 2024	10	10	3,703.00
February 2024	11	11	7,580.00
March 2024	12	12	8,760.00
April 2024	13	13	11,572.00
May 2024	17	17	10,764.00
June 2024	15	15	10,573.00
July 2024	19	19	12,689.00
August 2024	19	19	11,750.00
September 2024	20	20	10,329.00
October 2024	18	18	13,058.00
<b>November 2024</b>	<b>27</b>	<b>27</b>	<b>32,337.00</b>

### PRIVATE TRANSFERS PROCESSED

MONTH	DAILY KILOGRAMS
November 2023	0.00
December 2023	0.00
January 2024	0.00
February 2024	0.00
March 2024	3.00
April 2024	0.00
May 2024	0.00
June 2024	91.97
July 2024	0.00
August 2024	75.71
September 2024	0.00
October 2024	6.87
<b>November 2024</b>	<b>0.00</b>

### OVER QUOTA (OVER 5 DAYS) REPORT BY MONTH

MONTH	# OF PRODUCERS	KGS BUTTERFAT
November 2023	3	41
December 2023	6	475
January 2024	10	1,178
February 2024	9	1,850
March 2024	18	1,367
April 2024	16	1,336
May 2024	14	1,171
June 2024	13	1,329
July 2024	5	379
August 2024	1	14
September 2024	0	0
October 2024	6	338
<b>November 2024</b>	<b>3</b>	<b>155</b>



SUMMARY REPORT OF CREDITS NOVEMBER 2024 - 144 PRODUCERS		
DAYS	# OF PRODUCERS	POSITIVE CREDITS ACCUMULATED (KGS OF BFAT)
+ 5	4	1,764
0 to + 5	48	22,421
<b>TOTAL</b>	<b>52</b>	<b>24,185</b>
DAYS	# OF PRODUCERS	NEGATIVE CREDITS ACCUMULATED (KGS OF BFAT)
0 to -5	44	33,649
-5 to -10	31	63,193
-10 to -15	14	44,678
-15	3	3,784
<b>TOTAL</b>	<b>92</b>	<b>145,304</b>

LOST OPPORTUNITY REPORT		
MONTH	# OF PRODUCERS	LOST OPPORTUNITY (KGS OF BUTTERFAT)
November 2023	2	279
December 2023	0	0
January 2024	0	0
February 2024	0	0
March, 2024	1	375
April 2024	1	318
May 2024	1	389
June 2024	2	548
July 2024	1	1,212
August 2024	2	1,226
September 2024	4	2,166
October 2024	3	1,030
<b>November 2024</b>	<b>3</b>	<b>596</b>

WEIGHTED AVERAGE COMPONENT TESTS & PRICES NOVEMBER 2024		
COMPONENTS	AVERAGE TEST	PRICE PER KILOGRAM CLASS 1 TO 5
Butterfat	4.5878	19.228839
Protein	3.4322	3.023866
Other Solids	5.8669	0.884504

The average butterfat price received per kilogram was \$22.62

Milk Sale Revenue	\$25,171,194.61	<b>Quality Bonus:</b>  WMP Quality Bonus 0.001028 SaskMilk Quality Bonus 0.002355  <b>Total Quality Bonus Rate for November 2024</b> 0.003383 per litre
WMP Revenue/<Expense>	<\$433,661.83>	
<b>Total Revenue</b>	<b>\$24,737,532.78</b>	



**Farm Stress Line**  
SASKATCHEWAN  
Made Possible by CN

**Providing support when you need it the most, available 24 Hours, Days a week. CALL 1-800-667-4442**

Farm Stress Line was initiated and funded by the Ministry of Agriculture in 1992. The Ministry of Agriculture contracted with MCS Inc. in 2012 to administer and provide crisis counselling to rural Saskatchewan. This change provides a 24hr 7 days a week response through a 1-800 toll free phone line with a proven expertise in crisis counselling.

Mobile Crisis Services, Inc. is a non-profit community-based organization that has been providing crisis intervention services to Regina and the province of Saskatchewan since 1974. The overall purpose of the agency is to provide integrated and comprehensive social and health crisis intervention services.

Mobile Crisis Services is governed by a volunteer Board of Directors. These volunteers contribute a significant amount of time to assist in the direction of programs and services for youth, individuals, families and seniors.

Services are provided on a 24-hour, seven day a week basis, in order to assure accessibility regardless of the time of day. The agency was formulated on the philosophy of "where services should be provided, they will be provided." The agency represents an innovative approach to crisis intervention and is an integral part of the health and social service delivery systems. Mobile Crisis Services is committed to community health and the development of supportive communities. For more information, visit:

<https://farmstressline.ca/>



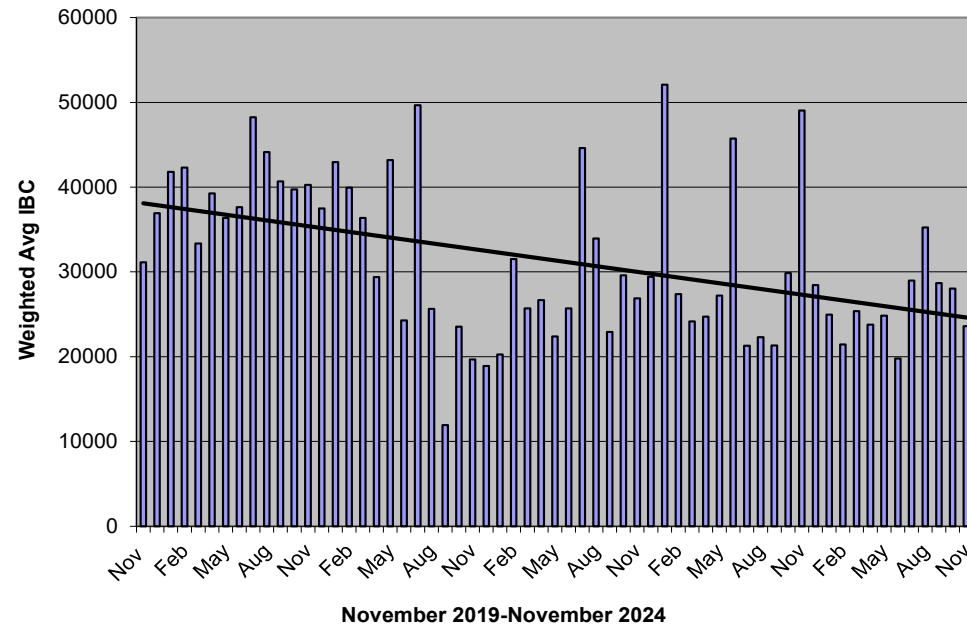
	(1) Monthly Total Production  Kgs of bf	(2) Total Monthly CDC Quota Allocation  Kgs bf	(3) Monthly Over or (Under) Production  Kgs bf  col. 1 - 2 = 3	(4) Lower Flexibility Limit -2.00%  Kgs bf  col. 8 * -1.5%	(5) Upper Flexibility Limit 1.25%  Kgs bf  col. 8 * 1.0%	(6) Cumulative Over or (Under) Production with limits  Kgs bf	(7) Cumulative Over or (Under) Production with limits (%)  col. 6 / 8	(8) Rolling 12 Month Total Quota  Kgs bf
Nov-23	1,051,030	1,113,766	(62,736)	-248,305	155,190	1,039,422	8.51%	12,415,228
Dec-23	1,084,199	1,026,856	57,343	-248,718	155,449	1,113,434	8.95%	12,435,902
Jan-24	1,081,769	984,061	97,708	-248,094	155,059	1,211,142	9.76%	12,404,706
Feb-24	1,012,539	998,713	13,826	-250,487	156,555	1,224,968	9.78%	12,524,364
Mar-24	1,032,842	1,119,876	(87,034)	-251,106	156,941	1,137,934	9.06%	12,555,295
Apr-24	1,022,410	1,041,523	(19,113)	-252,151	157,594	1,118,822	8.09%	12,607,550
May-24	1,057,676	1,062,316	(4,640)	-253,989	158,743	1,015,772	8.00%	12,699,454
Jun-24	1,020,005	1,023,800	(3,795)	-255,018	159,386	1,011,977	8.07%	12,750,883
Jul-24	1,054,317	1,034,623	19,694	-255,860	159,912	1,048,972	8.20%	12,792,984
Aug-24	1,080,448	1,139,872	(59,424)	-256,747	160,467	989,548	7.90%	12,837,330
Sep-24	1,060,441	1,119,990	(59,549)	-255,026	159,391	954,132	7.48%	12,751,284
Oct-24	1,122,537	1,226,912	(104,375)	-257,846	161,154	849,757	6.59%	12,892,308
<b>Oct-24</b>	<b>1,093,664</b>	<b>1,165,113</b>	<b>(71,449)</b>	<b>-258,873</b>	<b>161,796</b>	<b>778,307</b>	<b>6.01%</b>	<b>12,943,655</b>

In **October**, Saskatchewan had a monthly CDC allocation of **1,165,113 kgs** of butterfat. Saskatchewan production was **71,449 kgs** of butterfat under and cumulatively over by **778,307 kgs** of butterfat. On a percentage basis, Saskatchewan is **7.26%** above our CDC allocation flexibility limits based on the Continuous Quota model. The -2.00% lower flexibility limit is in effect.

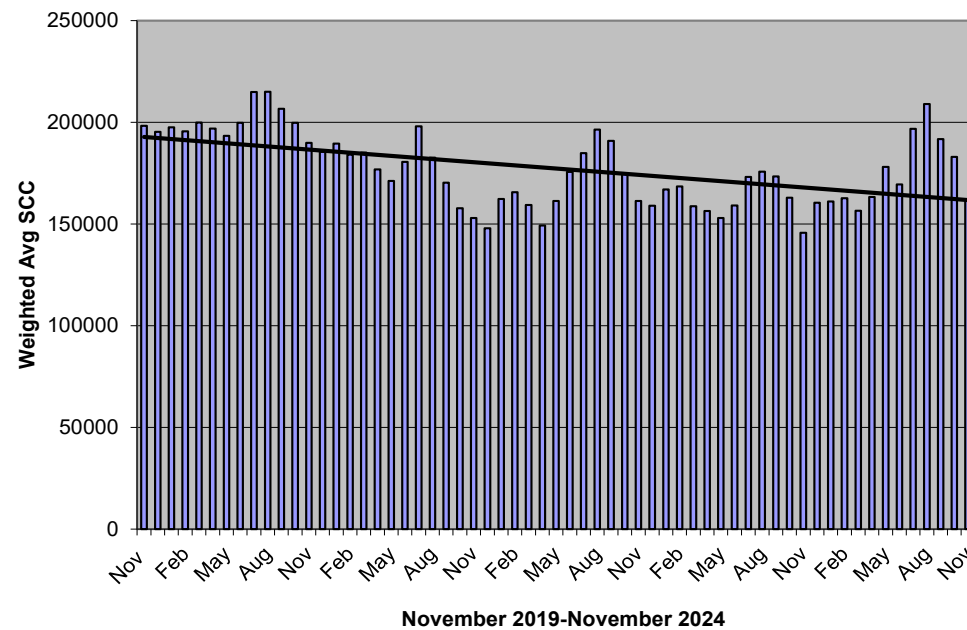
- (1) Monthly Production in Saskatchewan
- (2) Total Monthly Quota = Class 1 sales + Monthly MSQ + Carry Forward
- (3) Difference between the monthly production (1) and the total monthly quota (2)
- (4) The Lower Flexibility Limit is -2.00% of Rolling 12 Month Total Quota (9)
- (5) The Upper Flexibility Limit is 1.25% of Rolling 12 Month Total Quota (9)
- (6) Previous Month Cumulative Over or (Under) Production + Current Monthly Over or (Under) Production (capped at lower or upper limit if applicable)
- (7) Equal to Column (6) expressed as a percentage basis within the flexibility limits
- (8) Total Monthly CDC Quota Allocation for the previous 12 months



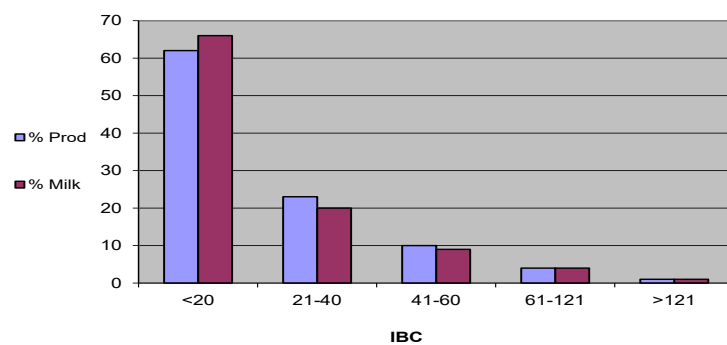
Monthly Weighted Average IBC



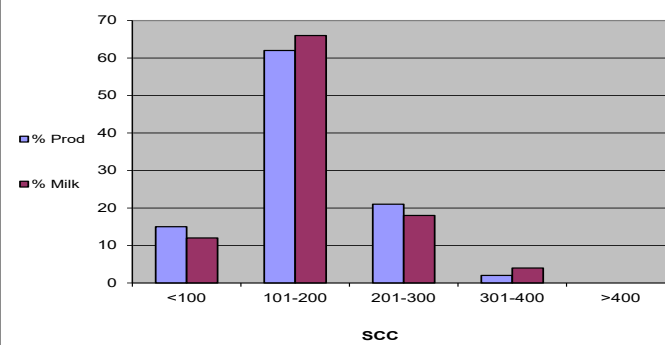
Monthly Weighted Average SCC



November 2024



November 2024



# November 2024 Quality Bonus

101115806 SASKATCHEWAN LTD.***** ADIT FARMS INC.*****	HUTTERIAN BRETH OF PENNANT INC. ***** DAUM DAIRIES*****	HUTTERIAN BRETHREN CHURCH OF EAGLE CREEK INC.***** HUTTERIAN BRETHREN CHURCH OF LAJORD***** HUTTERIAN BRETHREN CHURCH OF QUILL LAKE INC.***** HUTTERIAN BRETHREN CHURCH OF SPRING LAKE INC.***** HUTTERIAN BRETHREN CHURCH OF STAR CITY INC.****	LAKEVIEW HOLSTEINS LTD.***** LAZY DAY FARMS****	SCOTT COLONY***** SEPTEMBER SUN ACRES LTD.*****
ARTLAND DAIRIES INC*****	DE TIPPE DAIRY***	HUTTERIAN BRETHREN CHURCH OF QUILL LAKE INC.***** HUTTERIAN BRETHREN CHURCH OF SPRING LAKE INC.***** HUTTERIAN BRETHREN CHURCH OF STAR CITY INC.****	LEYENHORST, ALBERT & HEATHER***** LOEWEN DARCY & ROSALIE***** LOVHOLM HOLSTEINS*****	SIERRA HUTTERIAN BRETHREN***** SIMMIE HUTTERIAN BRETHREN CHURCH***** SMILEY HUTTERIAN BRETHREN*****
BENCH HUTTERIAN BRETHREN LTD	DIAMOND HOLSTEINS LTD.*****	HUTTERIAN BRETHREN CHURCH OF SPRING LAKE INC.***** HUTTERIAN BRETHREN CHURCH OF STAR CITY INC.****	LOEWEN DARCY & ROSALIE***** LOVHOLM HOLSTEINS*****	SIMMIE HUTTERIAN BRETHREN CHURCH***** SMILEY HUTTERIAN BRETHREN*****
BAILDON HUTT BRETHREN INC.*****	DOWNIE LAKE CHURCH COLONY*****	HUTTERIAN BRETHREN CHURCH OF STAR CITY INC.****	LOVHOLM HOLSTEINS*****	SPRINGBROOK FARMS LTD.*****
BALGONIE HOLSTEINS LTD.*****	EAGLEWOOD HOLDINGS LTD***** EARVIEW COLONY*****	HUTTERIAN BRETHREN CHURCH PONTEIX***** HUTTERIAN BRETHREN OF ABBEY**	MAIN CENTRE DAIRY FARM***** MARFAY FARMS LIMITED*****	SPRINGBROOK FARMS LTD.***** SUNNYSIDE DAIRY*****
BENBIE HOLSTEINS LIMITED*****	EATONIA HUTTERIAN BRETHREN INC*****	HUTTERIAN BRETHREN OF DINSMORE*****	MIL-EN-ROY FARMS (1981) LTD*****	THE HUTTERIAN BRETHREN CHURCH OF RIVERVIEW LIMITED***** TOM & WENDY MUFFORD*****
BERKHOUT, SIMON & ARJA****	EATONIA HUTTERIAN BRETHREN INC*****	HUTTERIAN BRETHREN OF DINSMORE*****	MIL-EN-ROY FARMS (1981) LTD*****	THE HUTTERIAN BRETHREN CHURCH OF RIVERVIEW LIMITED***** TOM & WENDY MUFFORD*****
BERTOHN FARMS LTD.****	ELL'S DAIRY FARM 2010 INC.*****	HUTTERIAN BRETHREN OF KYLE*****	NIENHUIS FAMILY FARM INC.***** Osler Dairy Farms Ltd.***	VANGUARD HUTTERIAN BRETHREN*****
BEST-O-WEST-O DAIRY*****	HILLSVALE COLONY	HUTTERIAN BRETHREN OF MILDEN INC.*****	Osler Dairy Farms Ltd.***	VANGUARD HUTTERIAN BRETHREN*****
BLU J FARMS*****	ENNS FARMS LTD*****	HUTTERIAN BRETHREN OF WEST BENCH***** J & J BOOT DAIRY LTD. #2*****	PLUM BLOSSOM FARM LTD.(SASK)***** PRAIRIE WEST DAIRIES INC.*****	VANZESSEN DAIRY INC.***** W.C.C. DAIRIES CORP.*****
BRAMVILLE JERSEYS*****	FEHR'S RIVERFRONT FARM LTD.*****	BENCH***** J & J BOOT DAIRY LTD. #2*****	PRAIRIE WEST DAIRIES INC.*****	W.C.C. DAIRIES CORP.*****
BROYHILL HOLSTEINS*****	FOTH VENTURES LTD*****	JAYLEE FARMS	Q VALLEY FARM LTD.*****	WALDECK HUTTERIAN BRETHREN*****
BRUINSDALE FARMS LTD.*****	FOX VALLEY FARMING CO. LTD*****	JIMLEE FARMS LTD.*****	R & F LIVESTOCK INC.*****	WESTERN DAIRY FARMS (2016) LTD. #1*****
BUTTE COLONY*****	GLIDDEN HUTTERIAN BRETHREN*****	K & K THONER DAIRY LTD.*****	RICHARD VAN DONGEN & LORETTA BERKHOUT- VAN DONGEN***** RIVER VALLEY HOLSTEINS LTD.***** RIVERSIDE DAIRY LTD.****	WESTWIKK FARMS***** WHEATLAND HUTT BRET OF CABRI INC***** WILLOW PARK COLONY*****
CARTER WOODSIDE*****	GRASSY HILL COLONY*****	KEN & KAREN GIESBRECHT*****	RICHARD VAN DONGEN & LORETTA BERKHOUT- VAN DONGEN***** RIVER VALLEY HOLSTEINS LTD.***** RIVERSIDE DAIRY LTD.****	WESTWIKK FARMS***** WHEATLAND HUTT BRET OF CABRI INC***** WILLOW PARK COLONY*****
CHRIS-ADIE HOLSTEINS LTD.*****	HAVERLAND DAIRY LTD.*****	KENBERT ACRES***	RICHARD VAN DONGEN & LORETTA BERKHOUT- VAN DONGEN***** RIVER VALLEY HOLSTEINS LTD.***** RIVERSIDE DAIRY LTD.****	WESTWIKK FARMS***** WHEATLAND HUTT BRET OF CABRI INC***** WILLOW PARK COLONY*****
CLEAR SPRING COLONY*****	HIGHDALE FARMS LTD.*****	KENSTAL FARMS INC.*****	ROSETOWN FARMING CO. LTD.*****	RYDALL LIVESTOCK LTD.***
CORNELIUS & TRACY WIEBE*****	HUTT BRET CHURCH OF SWIFT CURRENT INC****	KESSEL FAMILY FARM*****	RYDALL LIVESTOCK LTD.***	RYDALL LIVESTOCK LTD.***
COUNTRY HILLS HUTTERIAN BRETHREN INC.***** CRAILA DAIRY LTD*****	HUTTERIAN BRETH CHURCH ARM RIVER***** HUTTERIAN BRETH CHURCH OF BEECHY***** HUTTERIAN BRETH CHURCH SPRING CREEK*****	KIELSTRA HOLSTEINS INC.***** KNITTIG FARMS LTD.***** LAKEVIEW COLONY*****	SAND LAKE HUTTERIAN BRETHREN***** Sandy Ridge Dairy Ltd.***** SCHAEFFER, RONALD J*****	SAND LAKE HUTTERIAN BRETHREN***** Sandy Ridge Dairy Ltd.***** SCHAEFFER, RONALD J*****
DALVOORDE DAIRIES LTD.*****	HUTTERIAN BRETH CHURCH ARM RIVER***** HUTTERIAN BRETH CHURCH OF BEECHY***** HUTTERIAN BRETH CHURCH SPRING CREEK*****	KIELSTRA HOLSTEINS INC.***** KNITTIG FARMS LTD.***** LAKEVIEW COLONY*****	SAND LAKE HUTTERIAN BRETHREN***** Sandy Ridge Dairy Ltd.***** SCHAEFFER, RONALD J*****	SAND LAKE HUTTERIAN BRETHREN***** Sandy Ridge Dairy Ltd.***** SCHAEFFER, RONALD J*****





## Who Should I Call?



Who at the SaskMilk office should producers call?  
Here's a handy guide!

FOR	CALL	AT
<ul style="list-style-type: none"> <li>Quota Exchange and Private Quota Transfers</li> <li>Leases</li> <li>Transfer Credits</li> <li>Security Applications</li> <li>Projections for production</li> <li>Name Changes</li> <li>Designation of Signing Authority</li> <li>Monthly production numbers for producers</li> </ul>	Bev Solie	306-721-9488
<ul style="list-style-type: none"> <li>Website enquiries</li> <li>Newsletter advertising</li> <li>Sponsorship Requests</li> <li>Dairy Conference</li> </ul>	Cailyn Jones	306-540-3639
<ul style="list-style-type: none"> <li>Producer statements</li> <li>Banking info for direct deposit of milk pay</li> <li>Milk pick-up issues -variances in volumes, planning to quit shipping, etc.</li> </ul>	Darlene Weighill	306-721-9491
<ul style="list-style-type: none"> <li>On Farm- licensing, facilities, equipment, driveways, yards, animal care</li> <li>Lab testing results</li> <li>Pro Action- Food Safety (CQM), Animal Care, Traceability, Biosecurity, Environment</li> <li>Extension services</li> </ul>	Tina Leverton	306-721-9486
<ul style="list-style-type: none"> <li>Monthly milk prices paid to producers</li> <li>Provincial &amp; National production updates</li> </ul>	Doug Miller	306-721-9485
<ul style="list-style-type: none"> <li>On Farm- licensing, facilities, equipment, driveways, yards, animal care</li> <li>Bulk truck drivers- licensing, complaints/issues</li> <li>Bulk tank calibrations</li> <li>Rayner Dairy Centre &amp; Research</li> <li>Environment and Regulatory</li> </ul>	Chris Pinno	306-721-9494
<ul style="list-style-type: none"> <li>SaskMilk Portal Assistance</li> <li>Website enquiries</li> <li>Newsletter advertising</li> <li>Dairy Conference</li> <li>Nutrition Resource Ordering</li> </ul>	Jenn Buehler	306-721-9492
<ul style="list-style-type: none"> <li>Website enquiries</li> <li>Newsletter advertising</li> <li>Policy</li> <li>Media or news stories or if you have been contacted by any media agency or reporter</li> </ul>	Julie Ell	306-519-3136

SaskMilk offers a free classifieds service as part of its newsletter. Anyone wishing to place an ad is welcome to contact the SaskMilk office at (306) 949-6999 or [info@saskmilk.ca](mailto:info@saskmilk.ca). All negotiations will be independent of SaskMilk. Please note that ads will be posted in two issues and will then be removed unless SaskMilk is notified otherwise.

### SaskMilk Board & Executive Director

**Teresa Florizone**  
Executive Director  
(306) 721-9480  
Cell: (306) 527-7458  
[teresa.florizone@saskmilk.ca](mailto:teresa.florizone@saskmilk.ca)

**Gordon Ell**  
Chair  
(306) 535-1922  
[gt.ell@sasktel.net](mailto:gt.ell@sasktel.net)

**Merlis Wiebe**  
(306) 229-0696  
[merlisw@gmail.com](mailto:merlisw@gmail.com)

**Melvin Foth**  
(306) 232-3462  
[mel.foth56@gmail.com](mailto:mel.foth56@gmail.com)

**Tymen Vanzessen**  
(306) 361-7551  
[tymenvanzessen@hotmail.com](mailto:tymenvanzessen@hotmail.com)

**Derek Westeringh**  
(306) 716-1959  
[derekw@westbow.ca](mailto:derekw@westbow.ca)

**Leonard Wipf**  
(306) 491-0432  
[leonard.countryclover@gmail.com](mailto:leonard.countryclover@gmail.com)

#### Reminder!

The deadline date for Quota Transfer, Quota Exchange, and 10% Transfer Limit Exemptions is the 6th of each month

Your Quota Transfer, and 10% Exemption Applications must be received on or before the 6th of the month in order to be effective the 1st of the following month  
Quota Exchange forms must be received in the SaskMilk office on or before the 6th of the month for that month's Exchange.

