



IN THIS ISSUE:

Quota Exchange	4
Production	8
SCC/BCC	11
CAP	12
In the Community	13
Code of Practice	14
DFC Update	15
Quality Bonus	16
Classifieds	17

SaskMilk Office Relocation

After a lengthy process of searching for a new space and subsequent renovating, SaskMilk has officially relocated to 470 Maxwell Crescent in Regina. This new office is a 7,400 square-foot, stand-alone property that better meets the needs of staff and industry. The building was extensively renovated and is a welcome upgrade from the previous office at a lower cost.

While staff will continue to work from home through the summer months, it is more effective to have time in the office and face-to-face collaboration. Staff are looking forward to enjoying the new space once it is appropriate to work in-person again.

All office and staff phone numbers, fax numbers, and email addresses will remain the same, though SaskMilk will have a new mailing address:

**470 Maxwell Crescent
Regina, Saskatchewan
S4N 6L7**

The view from the parking lot. Photo by Chelsea Wilcoxon.



The new kitchen and lunchroom. Photo by Chelsea Wilcoxon.

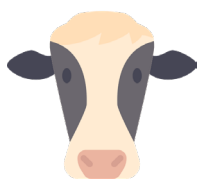




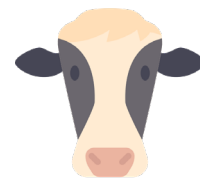
The boardroom and new furniture. Photo by Chelsea Wilcoxon.













The new warehouse space. Photo by Chelsea Wilcoxon.



Who Should I Call?



Who at the SaskMilk office should producers call?
Here's a handy guide!

FOR	CALL	AT
<ul style="list-style-type: none">  Sponsorship Requests <ul style="list-style-type: none"> • donation Requests • Dairyanna's Costume and Events • School Milk Program • Nutrition Resource Ordering 	Anita Medl	306-721-9483
<ul style="list-style-type: none">  Quota Exchange and Private Quota Transfers <ul style="list-style-type: none"> • Leases • Transfer Credits • Security Applications • Projections for production • Name Changes • Designation of Signing Authority • Monthly production numbers for producers 	Bev Solie	306-721-9488
<ul style="list-style-type: none">  School Milk Program <ul style="list-style-type: none"> • Marketing Activities 	Chelsea Wilcoxon	306-527-0753
<ul style="list-style-type: none">  Producer statements <ul style="list-style-type: none"> • Banking info for direct deposit of milk pay • Milk pick-up issues -variances in volumes, planning to quit shipping, etc. 	Darlene Weighill	306-721-9491
<ul style="list-style-type: none">  On Farm- licensing, facilities, equipment, driveways, yards, animal care <ul style="list-style-type: none"> • Lab testing results • Bulk truck drivers- licensing, complaints/issues • Bulk tank calibrations • Pro Action- Food Safety (CQM), Animal Care, Traceability, Biosecurity, Environment 	Deb Haupstein	306-721-9486
<ul style="list-style-type: none">  Monthly milk prices paid to producers <ul style="list-style-type: none"> • Provincial & National production updates 	Doug Miller	306-721-9485
<ul style="list-style-type: none">  Rayner Dairy Centre & Research <ul style="list-style-type: none"> • Extension services 	Emily Morabito	306-966-6015
<ul style="list-style-type: none">  SaskMilk Portal Assistance 	Jenn Buehler	306-721-9492
<ul style="list-style-type: none">  Media or news stories or if you have been contacted by any media agency or reporter <ul style="list-style-type: none"> • Trade agreements, international trade updates • DEAP policy/program enquiries • Research enquiries or proposals 	Joy Smith	306-721-9482
<ul style="list-style-type: none">  Social media enquiries (Twitter, Instagram, Facebook) <ul style="list-style-type: none"> • Website enquiries • Newsletter advertising • Dairy Conference 	Rigel Smith	306-721-9493

Quota Exchange

The market-clearing price established for the June 2021 Quota Exchange was \$42,050.

The next Quota Exchange will be held on July 15, 2021. All offers to sell and bids to purchase quota through the Quota Exchange must be submitted by midnight, July 6, 2021. SaskMilk recommends that offers and bids be submitted well in advance of the deadline date to ensure adequate time for corrections, if necessary.

When making bids on the Quota Exchange, the price on offers to sell quota is the minimum price that the producer is prepared to accept for that quota. Only if the market-clearing price is equal to or greater than the producer's minimum price will that producer qualify for participation in the Exchange. Conversely, the price on offers to purchase quota is the maximum price that the producer is prepared to pay for that quota. Only if the market-clearing price is equal to or less than the producer's maximum price will that producer qualify for participation in the Exchange. The clearing price is set at the price where the smallest difference exists between the accumulated volume offered for sale and the accumulated volume bid to purchase. The results of the Quota Exchange are outlined in the following table.

JUNE 2021 QUOTA EXCHANGE RESULTS

Market Clearing Price per kilogram of butterfat	\$42,050
Daily Kilograms offered to Purchase	168.00
Kilograms offered to Sell	108.33
Kilograms sold	108.00
Number of Producers	
- offered to purchase	7
- purchased quota	1
- offered to sell	2
- sold quota	2

JUNE 2021 QUOTA EXCHANGE CLEARING PRICE RESULTS

Price (\$/daily kg b.f.)	No. of Sellers	Cumulative Sellers	Daily Kgs b.f. offered for sale	Cumulative sales	Cumulative Sales less Cumulative purchases	Cumulative purchases	Daily Kgs b.f. offered to purchase	Cumulative bidders	No. of buyers
\$36,000.00	0	0	0.00	0.00	-168.00	168.00	10.00	7	1
\$37,000.00	0	0	0.00	0.00	-158.00	158.00	20.00	6	2
\$37,080.00	1	1	0.33	0.33	-137.67	138.00	0.00	4	0
\$38,000.00	0	1	0.00	0.33	-137.67	138.00	10.00	4	1
\$39,500.00	0	1	0.00	0.33	-127.67	128.00	10.00	3	1
\$41,800.00	1	2	108.00	108.33	-9.67	118.00	0.00	2	0
\$42,000.00	0	2	0.00	108.33	-9.67	118.00	10.00	2	1
\$42,050.00	0	2	0.00	108.33	0.33	108.00	108.00	1	1

Please contact Bev Solie at 306-949-6999 for inquiries dealing with quota management sheets, the Quota Exchange, for transfer credits, or with any other quota transactions.

TRANSFER CREDIT SUMMARY REPORT			
MONTH	# OF PRODUCERS TRANSFER IN	# OF PRODUCERS TRANSFER OUT	TOTAL KGS OF BUTTERFAT
May, 2020	6	6	3,000
June	8	8	8,328
July	11	11	13,384
August	11	11	6,964
September	30	30	22,918
October	19	19	13,812
November	15	15	8,120
December	20	20	10,452
January	14	14	7,350
February	13	13	8,529
March	9	9	10,120
April	10	10	10,680
May, 2021	13	13	7,349

PRIVATE TRANSFERS PROCESSED	
MONTH	DAILY KILOGRAMS
May, 2020	49.00
June	164.00
July	410.00
August	199.00
September	1,146.31
October	10.00
November	96.88
December	0.00
January	25.00
February	0.00
March	578.58
April	40.00
May, 2021	0.00

OVER QUOTA (OVER 5 DAYS) REPORT BY MONTH		
MONTH	# OF PRODUCERS	KGS BUTTERFAT
May, 2020	4	764
June	3	190
July	5	216
August	3	34
September	2	202
October	2	174
November	2	142
December	4	341
January	5	1,437
February	9	1,496
March	25	1,690
April	20	654
May, 2021	18	781

SUMMARY REPORT OF CREDITS MAY 2021 - 156 PRODUCERS

DAYS	# OF PRODUCERS	POSITIVE CREDITS ACCUMULATED (KGS OF BUTTERFAT)
+ 5	7	4,961
0 to + 5	50	23,919
TOTAL	57	28,880
DAYS	# OF PRODUCERS	NEGATIVE CREDITS ACCUMULATED (KGS OF BUTTERFAT)
-15	3	5,137
-10 to -15	22	76,386
-5 to -10	35	46,176
0 to -5	39	23,856
TOTAL	99	151,555

LOST OPPORTUNITY REPORT

MONTH	# OF PRODUCERS	LOST OPPORTUNITY (KGS OF BUTTERFAT)
May, 2020	9	2,479
June, 2020	8	3,531
July, 2020	10	3,572
August, 2020	8	2,022
September, 2020	6	617
October, 2020	3	491
November, 2020	3	255
December, 2020	4	844
January, 2021	5	1,006
February, 2021	2	365
March, 2021	2	522
April, 2021	2	846
May, 2021	3	1,573

WEIGHTED AVERAGE COMPONENT TESTS & PRICES MAY 2021

COMPONENTS	AVERAGE TEST	PRICE PER KILOGRAM CLASS 1 TO 5
Butterfat	4.1962	16.158823
Protein	3.2444	2.458701
Other Solids	5.9005	0.675969

The average butterfat price received per kilogram was \$19.01.

SASKATCHEWAN MILK POOL RESULTS MAY 2021

Milk Sale Revenue	\$20,936,149.44
WMP Revenue/<Expense>	<\$592,933.10>
Total Revenue	\$19,884,500.98

WHY DOES A MILKING STOOL ONLY HAVE THREE LEGS?



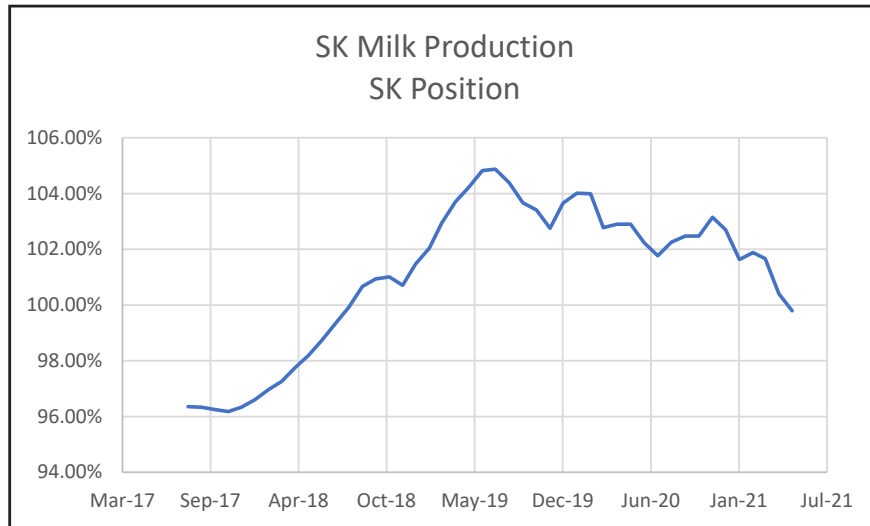
BECAUSE I HAVE THE UDDER!

	(1) Monthly Total Production Kgs of bf	(2) Total Monthly CDC Quota Allocation Kgs bf	(3) Monthly Over or (Under) Production Kgs bf col. 1 - 2 = 3	(4) Lower Flexibility Limit -2.00% Kgs bf col. 8 * -1.5%
May-20	1,020,648	947,006	73,642	-241,096
Jun-20	990,904	989,664	1,240	-242,452
Jul-20	1,023,353	1,044,803	(21,450)	-243,564
Aug-20	1,023,170	1,005,440	17,730	-242,210
Sep-20	1,022,765	1,040,287	(17,522)	-241,699
Oct-20	1,089,543	1,149,939	(60,396)	-241,828
Nov-20	1,048,426	1,077,998	(29,572)	-241,673
Dec-20	1,110,597	1,138,227	(27,630)	-243,172
Jan-21	1,106,333	1,059,133	47,201	-245,941
Feb-21	995,725	864,139	131,586	-245,225
Mar-21	1,065,238	1,109,168	(43,930)	-245,938
Apr-21	1,011,886	1,032,209	(20,323)	-249,271
May-21	1,047,519	1,050,598	(3,079)	-251,343

In May, Saskatchewan had a monthly CDC allocation of **1,047,519 kilograms** of butterfat. Saskatchewan production was **3079 kgs** of butterfat under and cumulatively over by **713,587 kgs** of butterfat. On a percentage basis, Saskatchewan is **5.68%** above our CDC allocation flexibility limits based on the Continuous Quota model. The -2.00% lower flexibility limit is in effect.

(5) Upper Flexibility Limit 1.25%	(6) Cumulative Over or (Under) Production with limits	(7) Cumulative Over or (Under) Production with limits (%)	(8) Rolling 12 Month Total Quota
Kgs bf	Kgs bf		Kgs bf
col. 8 *1.0%		col. 6 / 8	
150,685	651,716	5.41%	12,054,823
151,533	652,956	5.39%	12,122,607
152,228	631,506	5.19%	12,178,203
151,382	643,715	5.28%	12,110,521
151,062	622,175	5.15%	12,084,970
151,143	561,779	4.94%	12,091,404
151,046	567,629	5.10%	12,083,648
151,983	588,785	4.84%	12,158,620
153,713	635,986	5.28%	12,297,055
153,266	780,919	6.37%	12,261,248
153,711	736,989	5.99%	12,296,905
155,794	716,666	5.75%	12,463,534
157,089	713,587	5.68%	12,567,126

- (1) Monthly Production in Saskatchewan
- (2) Total Monthly Quota = Class 1 sales + Monthly MSQ + Carry Forward
- (3) Difference between the monthly production (1) and the total monthly quota (2)
- (4) The Lower Flexibility Limit is -2.00% of Rolling 12 Month Total Quota (9)
- (5) The Upper Flexibility Limit is 1.25% of Rolling 12 Month Total Quota (9)
- (6) Previous Month Cumulative Over or (Under) Production + Current Monthly Over or (Under) Production (capped at lower or upper limit if applicable)
- (7) Equal to Column (6) expressed as a percentage basis within the flexibility limits
- (8) Total Monthly CDC Quota Allocation for the previous 12 months



Beta-lactam Drug	Detection Level† (ppb*)	US Safe Level or Tolerance / Canadian MRL (ppb*)	Sulfa Drug	Detection Level† (ppb*)	US Safe Level or Tolerance / Canadian MRL (ppb*)
Amoxicillin	3.1	10 / None	Sulfadimethoxine	4.7	10 / 10∞
Ampicillin	7.7	10 / 10	Sulfamethazine	7.7	10 / 10∞
Ceftiofur and Metabolites^	53	100 / 100	Tetracycline Drug	Detection Level† (ppb*)	US Safe Level/ Tolerance / Canadian MRL (ppb*)
Cephapirin	14	20 / 20	Chlortetracycline	54	300 / 100
Cloxacillin	7.4	10 / None	Oxytetracycline	66	300 / 100
Penicillin G	2.2	5 / 6&	Tetracycline	21	300 / 100

† Positive at least 90% of the time with 95% confidence.

* parts per billion or ng/mL

^ Ceftiofur parent drug sensitivity is approximately 1/2 that reported in the table.

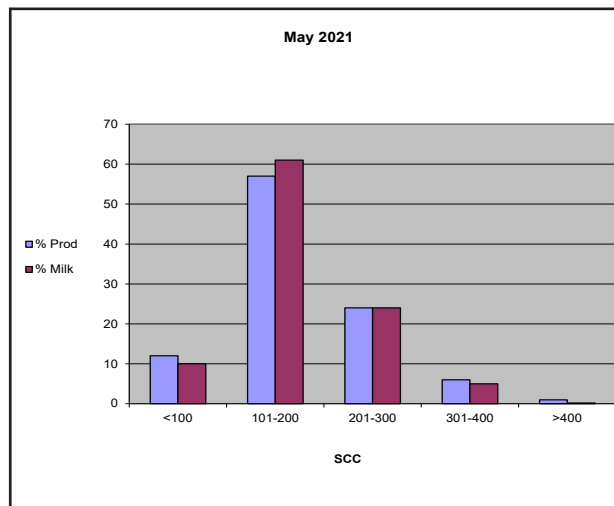
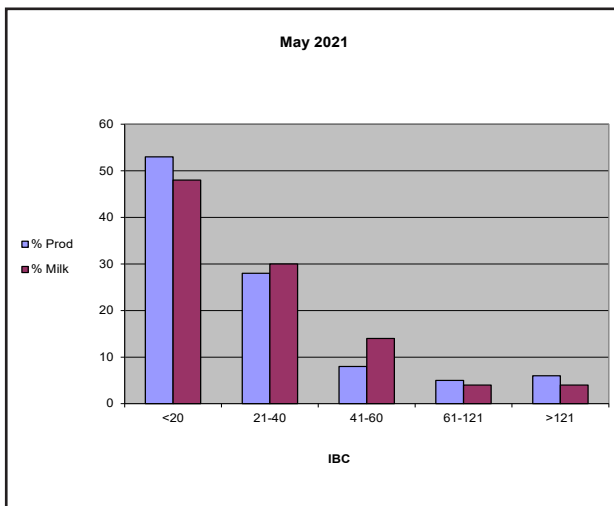
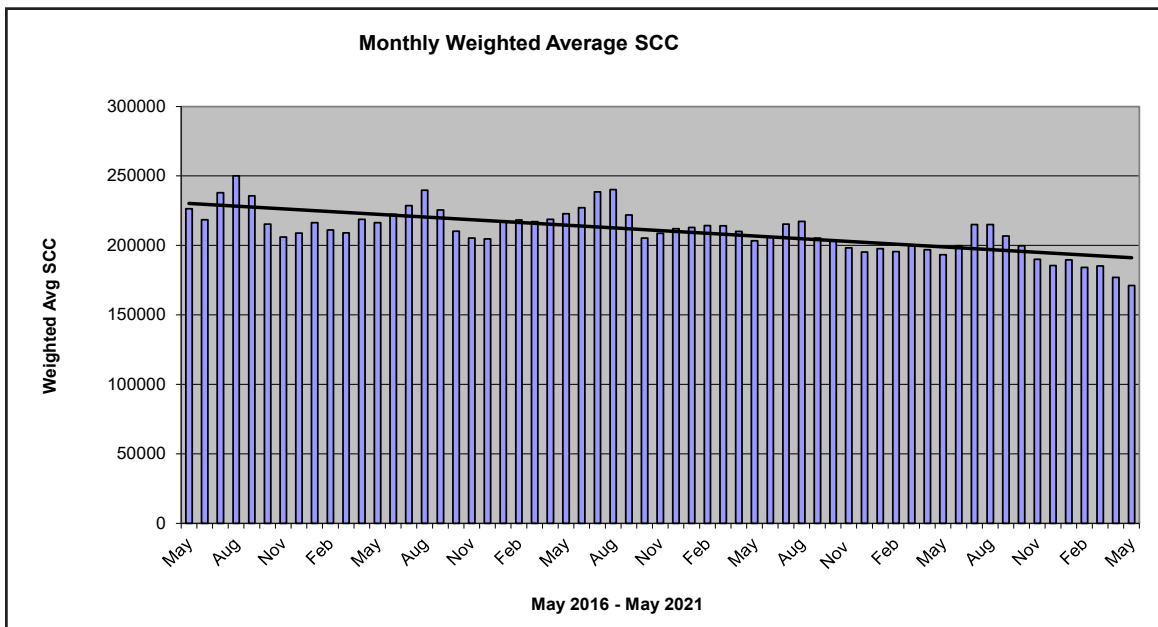
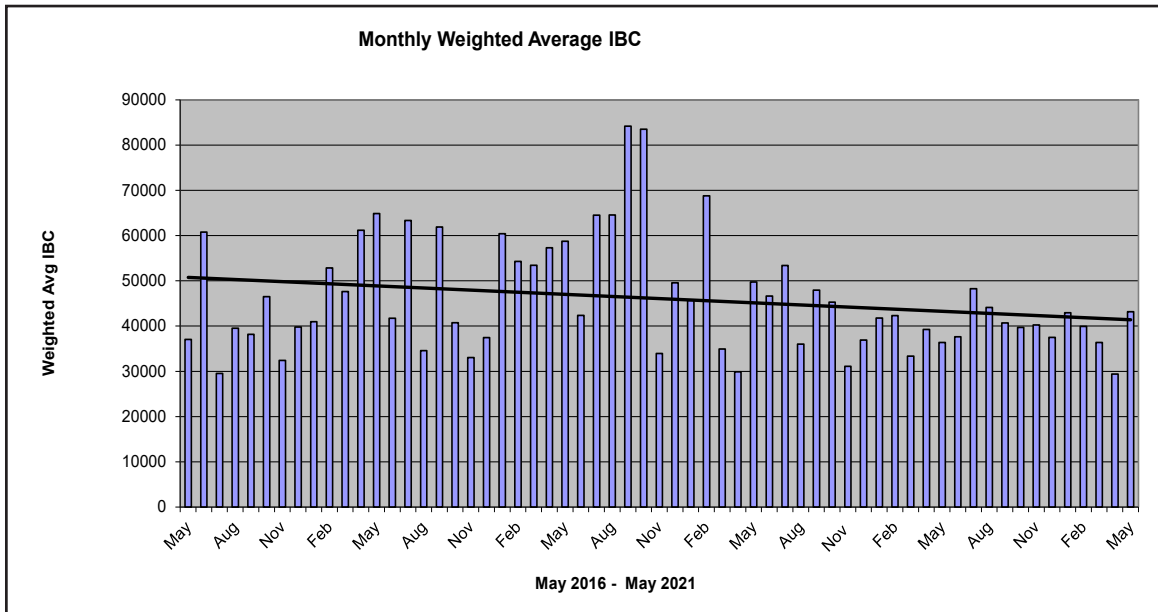
& Canadian MRL for penicillin G is 0.01 IU/ml, equivalent to 6 ppb.

∞ Canadian MRL for sulfa drugs are singly or in combination with other MRL listed sulfonamides.

Test stations are located at the following locations:

REGION	LOCATION	CONTACT
Swift Current, SK	Agifoods Truck Bay	675 Cheadle Street W., 306-773-1097 or Roger Ruf 306-741-3261
Star City, SK	Star City Colony	Reuben Tschetter, 306-921-9381
Grenfell, SK		Jim Ross, 306-697-2232
Yorkton, SK	Ford Dairy Farms Inc.	Bud & Margaret Ford, 306-782-7240
Saskatoon, SK	Agrifoods Truck Bay (east of Saputo receiving bay)	Mike V. or Mike K., 306-664-0202 After hours: 306-668-8135

Charm tests strips and Charm testers are now available for purchase through SaskMilk. Agrifoods is now carrying SNAP test kits for tetracyclines as well as beta lactams. For further information contact: Deb Hauptstein 306-721-9486



Canadian Agricultural Partnership (CAP)



The Canadian Agricultural Partnership is a \$388M investment into Saskatchewan over 5 years (2018-2023) to continue to help the agriculture industry innovate, grow and prosper.

There is a [listing of videos](#) that highlight the different programs being offered to farmers, ranchers and agribusinesses and explain the program intent, applicant eligibility and available funding. For the most up to date and detailed information on these programs, you can visit the [website](#).

FOR DAIRY SPECIFIC FUNDING

Risk Management → Assurance System Programs → Producer Programs → Dairy

The Assurance System Producer Program provides dairy producers with a rebate for veterinarian assessments and approved eligible equipment expenses that improve biosecurity and animal welfare practices.

Eligible items include: Colostrum batch pasteurizer; Foot baths; Headlock system and/or post-and-rail system; Slip prevention in walkways; Loading chute (Max rebate: \$3,000); Tilt table/trimming chute; Rubberized flooring; Improved stall comfort; Motorized cow brushes; Remote surveillance for calving; Group feeding systems for delivery of milk or replacer to calves; and Pain control administration training by veterinarian.

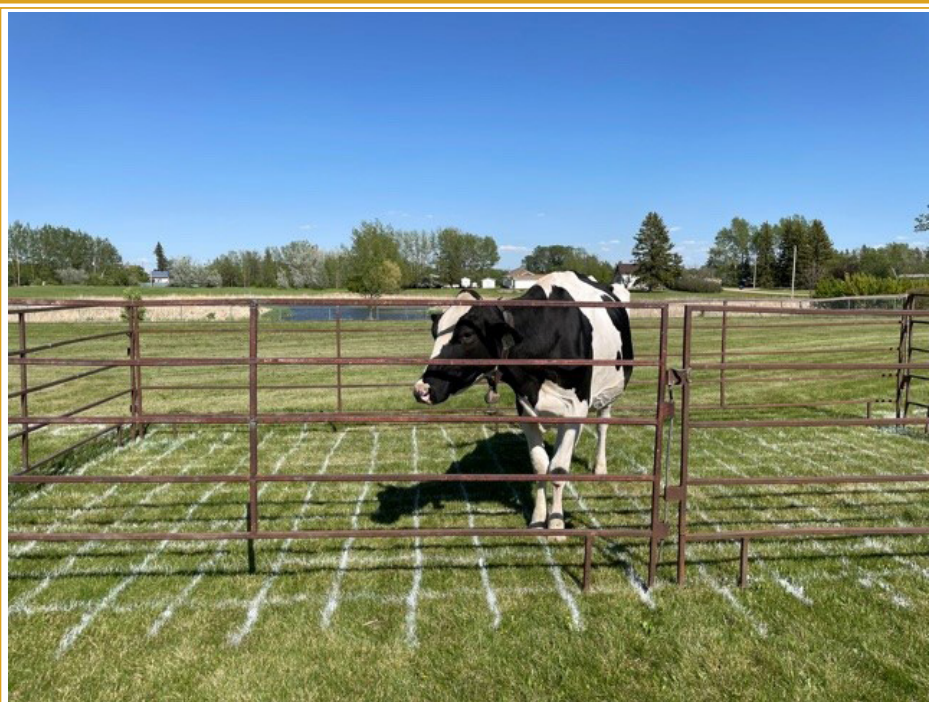
Visit the [website](#) for more details.



**CANADIAN
AGRICULTURAL
PARTNERSHIP**
Innovate. Grow. Prosper.

In the Community

Edenwold School held a "Cow Patty Bingo" fundraiser on June 3rd to raise money for the school grounds. Broyhill Holsteins provided the cow, Rokstar, for the event. The fundraiser sold out, raising \$2,000 for the school.



Rokstar prepares for her big moment. Photo by Anita Medl.

A crowd gathers for the Cow Patty Bingo event at Edenwold School. Photo by Anita Medl.



Code of Practice

6.2. Methods

Dairy producers will occasionally face situations where an animal is unlikely to respond favorably to treatment and must be euthanized on farm. It is the responsibility of livestock owners to make the right decision regarding euthanasia.

Euthanasia is the humane termination of the life of an animal. The method used must be quick, cause minimal pain and distress, and must be performed correctly using acceptable industry practices. Refer to Appendix J - Euthanasia of Cattle, for further guidance.

The following are currently the only acceptable methods for on-farm euthanasia of cattle:

- 🐄 free bullet (.22 caliber for calves, .22 magnum or high-powered rifle for mature heifers, cows and bulls)
- 🐄 penetrating captive bolt - followed by pithing, bleeding or cardiac puncture
- 🐄 non-penetrating captive bolt - followed by bleeding (not for adult cattle)
- 🐄 injection with barbiturates and other drugs (administered by a licensed veterinarian)

REQUIREMENTS

An acceptable method for euthanizing cattle must be used.

The method to euthanize cattle must be quick and cause the least possible pain and distress.

RECOMMENDED BEST PRACTICES

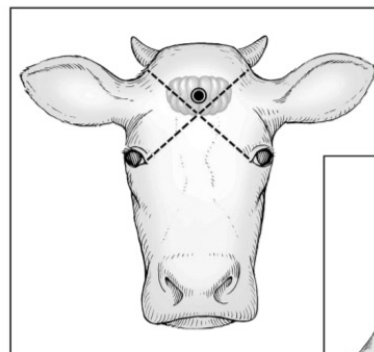
- 🐄 ensure only trained individuals are involved in euthanizing an animal
- 🐄 discuss euthanasia options with their veterinarian.

Appendix J

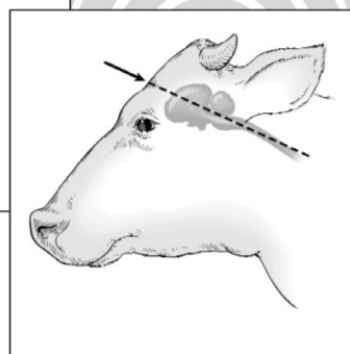


Euthanasia of Cattle

Anatomical Landmarks



**Not Between the Eyes! –but
above eyes as illustrated.**



DFC Update

Dairy farmers of tomorrow: young farmers debunk myths and shine a light on the future of dairy in Canada

Dairy Farmers of Canada (DFC) has launched a vibrant new marketing campaign that highlights the next generation of Canadian dairy farmers and their work towards our shared future. Dairy Farmers of Tomorrow features authentic and relatable young farmers shining a light on sustainable and responsible modern farming practices.

"We're excited to feature young dairy farmers from across the country in this campaign, as they bring to life a progressive and forward-facing industry that builds upon

Canada's tradition of producing high-quality milk under some of the world's most stringent standards," says Pierre Lampron, president of Dairy Farmers of Canada. "We're reminding consumers of Canadian dairy's progress in lowering carbon emissions, our farmers' commitment to animal care, and the fact that our milk is produced without the use of artificial growth hormones."

The Dairy Farmers of Tomorrow creative platform demonstrates that Canada's next generation of farmers is on a mission to keep innovating and keep improving, especially in the areas of animal care and sustainability. Working with third-party social media influencers, young Canadian dairy farmers showcase their use of innovative technologies while debunking myths about dairy farming practices.

"Behind Canadian dairy stands the Blue Cow logo, an iconic symbol recognized by nine out of 10 Canadians which represents the high standards that go into every drop of 100% Canadian milk," says Pamela Nalewajek, DFC's vice-president of marketing. "The Blue Cow is an emblem of truth and transparency that is backed by dedicated on-farm practices Canadian dairy farmers take to produce the highest quality milk while also committing to animal care and environmental sustainability."

The six-week-long, bilingual campaign which kicked off June 10, with social and digital components (featuring online video, influencers, web and audio), will run through July 22 nationwide. The lead creative agency on this campaign was Angry Butterfly, with media buying by Initiative.

To view the campaign, click [here](#).



May Quality Bonus

To get the quality bonus producers must have:
 Monthly Average:
 IBC - <= 30,000/ ml
 SCC- <= 250,000/ml
 FPt- lower than -0.525°Hortvet
 No positive inhibitors
 *represent # of months the quality bonus has been received

AARESTAD, P & D**	ELKREST FARMS LTD*****	KIELSTRA HOLSTEINS INC*****
BAILDON HUTT BRET***	J-C LAND & LIVESTOCK LTD*****	SPRING LAKE COLONY*****
HUT BRET CHURCH OF BEECHY*****	DIAMOND HOLSTEINS LTD****	BUTTE COLONY*****
NEUVIEW DAIRIES INC****	ARTLAND DAIRIES INC*****	BRAMVILLE JERSEYS***
CARONCREST FARMS LTD*****	HAVERLAND DAIRY LTD*****	HIDDEN VALLEY DAIRIES LTD****
CLEAR SPRING COLONY*****	LOEWEN, D & R**	HUTT BRETH SOVEREIGN INC***
CRAILA DAIRY LTD*****	NIENHUIS FAMILY FARM INC****	EARVIEW COLONY*****
BENBIE HOLSTEINS LTD*****	MAIN CENTRE DAIRY FARM*****	SUNNYSIDE DAIRY*****
LOVHOLM HOLSTEINS*****	DAUM DAIRIES*****	PLUM BLOSSOM FARM LTD.(SASK)*****
DOWNIE LAKE COLONY*****	MIL-EN-ROY FARMS (1981) LTD*****	JBK FARMS LTD****
EATONIA HUTT BRETH*****	STAR VALLEY FARM PART*****	HYLJON HOLSTEINS LTD*****
EL-NELL FARMS LTD**	HUTT BRET QUILL LAKE*****	WESTWICK FARMS*****
ELL'S DAIRY FARM**	LEYENHORST, A & H*****	HUTT BRET MILDEN INC**
BRUINSDALE FARMS LTD*****	VANZESSEN DAIRY INC*****	DE TIPPE DAIRY**
ENNS FARMS LTD*****	RIBSTONE HUTT COLONY****	GRASSY HILL COLONY****
W.C.C. DAIRIES CORP*****	HUTT BRET CHURCH OF RIVERVIEW ***	MCGEE COLONY***
RIVERSIDE DAIRY LTD***	ROBELLA HOLSTEINS****	HUTT BRET SOUTHLAND*****
SANDY RIDGE DAIRY LTD**	SAND LAKE HUTT BRET*****	HUTT BRET EAGLE CREEK*
FEHR'S RIVERFRONT FARM*****	SCHAEFFER, RON****	WIEBE, CORNY & TRACY****
FOTH VENTURES LTD****	101115806 SASK LTD*****	ADIT FARMS INC****
KENBERT ACRES*****	SIMMIE HUTT BRET*****	GIESBRECHT, KEN & KAREN****
GLIDDEN HUTTERIAN BRETHERN*****	SMILEY HUTT BRET*****	BERG DAIRIES****
RIVER VALLEY HOLSTEINS LTD***	SPRUCE LANE AG VENTURES CORP*	RICHARD VAN DONGEN*****
FOX VALLEY FARMING CO*****	BALGONIE HOLSTEINS LTD*****	LAKEVIEW HOLSTEINS LTD*****
HILLSVALE COLONY**	DALVOORDE DAIRIES LTD*****	
HODGEVILLE COLONY*****	VANGUARD HUTT BRET*****	
HUTT BRETH SPRING CREEK*****	WHEATLAND HUTT BRET OF CABRI*****	
HUTT BRET SWIFT CURRENT*****	DALKIM HOLSTEINS LTD***	
HUTT BRETH KYLE****	Q VALLEY FARM LTD*****	
HUTT BRET DINSMORE*****	WALLWAY FARMS LTD*****	
HUTT BRET WEST BENCH*****	BLU J FARMS*****	
HUTT BRET SPRINGWATER***	LOUAC HOLSTEINS INC*	
J & J BOOT DAIRY LTD*****	HIGHDALE FARMS LTD*****	
SEPT SUN ACRES LTD*****	WILLOW PARK COLONY*****	
JAYLEE FARMS INC*	EAGLEWOOD HOLDINGS LTD*****	
KESSEL FAMILY FARM*****	K & K THONER DAIRY LTD***	

Classified Ad Service

SaskMilk offers a free classifieds service as part of its newsletter. Anyone wishing to place an ad is welcome to contact the SaskMilk office at (306) 949-6999 or info@saskmilk.ca. All negotiations will be independent of SaskMilk. Please note that ads will be posted in two issues and will then be removed unless SaskMilk is notified otherwise.

DAIRY FARM FOR SALE AT OSLER

182 kgs. of quota with cows.
10 year old , 3 Lely robot barn.
3 1/2 quarters of land.
1 1/2 year old 3 bedroom house.
306 290 7975 or 306 229 4591.
E-mail : kenklassen11@icloud.com
annklassen@rocketmail.com

Reminder!

The deadline date for Quota Transfer, Quota Exchange, and 10% Transfer Limit Exemptions is the 6th of each month

Your Quota Transfer, and 10% Exemption Applications must be received on or before the 6th of the month in order to be effective the 1st of the following month. Quota Exchange forms must be received in the SaskMilk office on or before the 6th of the month for that month's Exchange.

SaskMilk Board of Directors

Matthew Flaman

Chair

(306) 537-9634

flamanmj@gmail.com

Albert Leyenhorst

Vice-Chair

(306) 230-0154

albertleyenhorst@gmail.com

Gorden Ell

Second Vice-Chair

(306) 535-1922

gt.ell@sasktel.net

Brian Lindenbach

(306) 591-0315

broyhill192@gmail.com

Jessica Lovich

(306) 201-7362

j_simanton@hotmail.com

Tom MacKenzie

(306) 352-2292

tommymilk@icloud.com

Blaine McLeod

(306) 631-8053

rb.mcleod@sasktel.net

Anthony Nienhuis

(306) 221-1598

nienhuis@sasktel.net

Leonard Wipf

(306) 491-0432

leonard.countryclover@gmail.com

Saskmilk