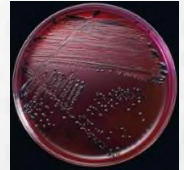


# Salmonella dublin

Dairy Info Day  
January 24, 2019

## What is Salmonella dublin?

- Bacteria
- Can infect cattle and humans
- Transmitted from manure
- Young animals most at risk



## Diseases

### Cattle

- Usually no signs of disease in older cows
- Disease most common in calves:
  - a) Pneumonia
  - b) Diarrhea
  - c) Blood infection (sepsis)
  - d) Death

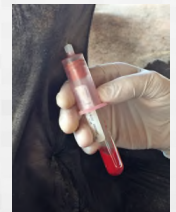
### Humans

- Severe blood infection (sepsis)
- Diarrhea
- Death

**Commonly resistant to antibiotics**

## Testing options

- Is it in the herd?
  - a) Easier to answer
  - b) Blood samples from every animal
  - c) Blood samples from all 4-6 month old calves
- Is an animal infected?
  - a) No test is 100%
  - b) Blood samples more accurate than feces



## Control

- Spread from mature cows to calves
- Fecal spread
- Key control points:
  - a) Calving
  - b) Preweaned calves
  - c) Biosecurity
- Calving pens:
  - a) Newborns at highest risk
  - b) Remove from dam within 2 hours of birth
  - c) Minimize stocking of calving pen
  - d) Clean and disinfect regularly
  - e) Do not use as sick pen
  - f) 4L high quality colostrum

## Control

- Preweaned calves:
  - a) Separate from cows and postweaned calves
  - b) Individual pens ideal
  - c) Cleaned and disinfected regularly
  - d) Equipment and clothing dedicated to this area
  - e) Wear gloves
  - f) Wash hands thoroughly
- Biosecurity:
  - a) Prevent spread onto farm
  - b) Animals
  - c) People
  - d) Equipment
  - e) Biosecurity standard for Canadian Dairy Farms
  - f) ProAction Biosecurity Module

## Precautions

- Can infect people
- Know whether you have it
- Prevent it coming in
- Get rid of infected animals
- Prevent spread:
  - a) Coveralls and boots dedicated to barn
  - b) Different coveralls, boots and equipment for preweaned calves
  - c) Wash hands!
  - d) No eating, drinking or smoking in barn
  - e) Unpasteurized milk a major source

## Take home messages...

- Infectious disease of cows and humans
- Present in Saskatchewan
- Find out if you have it
- Prevent it coming in
- Can be controlled and eliminated

## Questions?

