

# How do I figure out what is making my cows lame?



Dr. Chris Clark

Western College of Veterinary

Medicine

University of Saskatchewan



# There is only one answer to this question

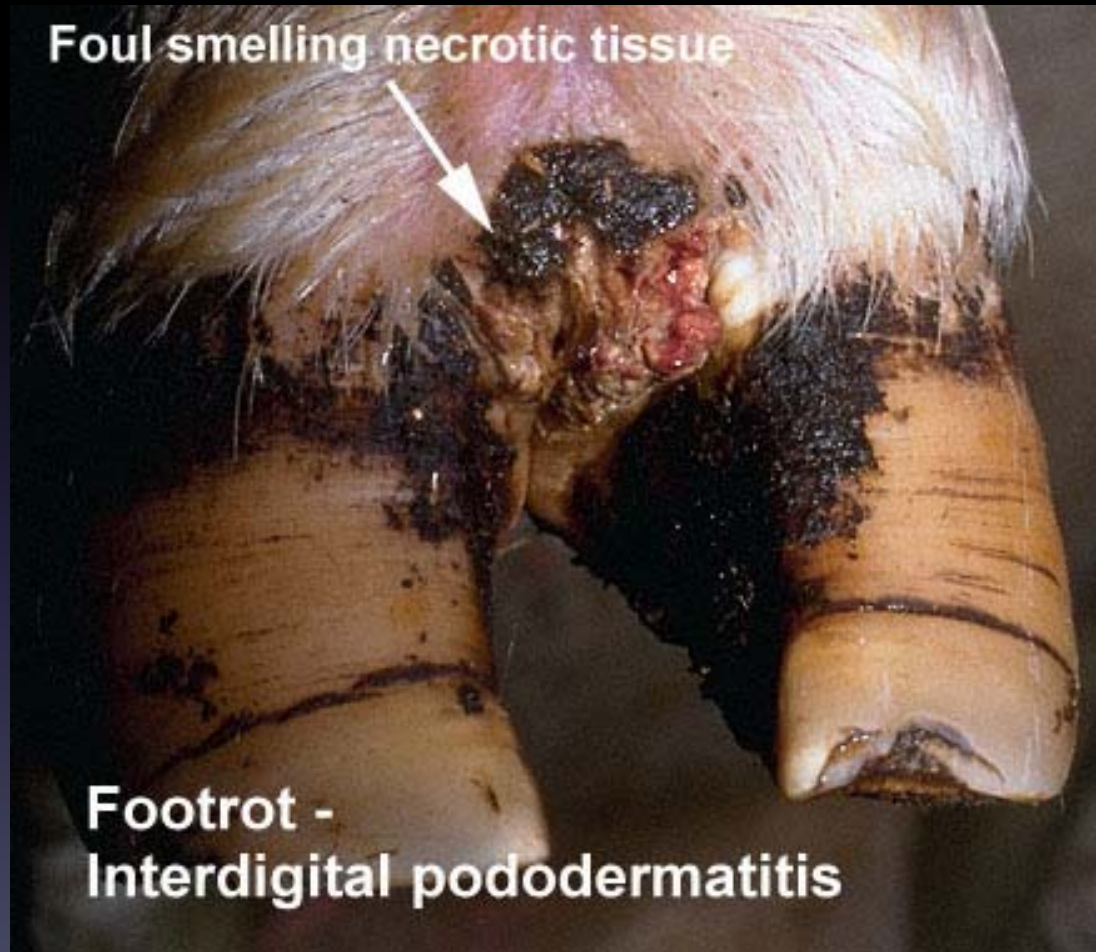
- No one ever wants to hear it!



- Pick up the foot!!

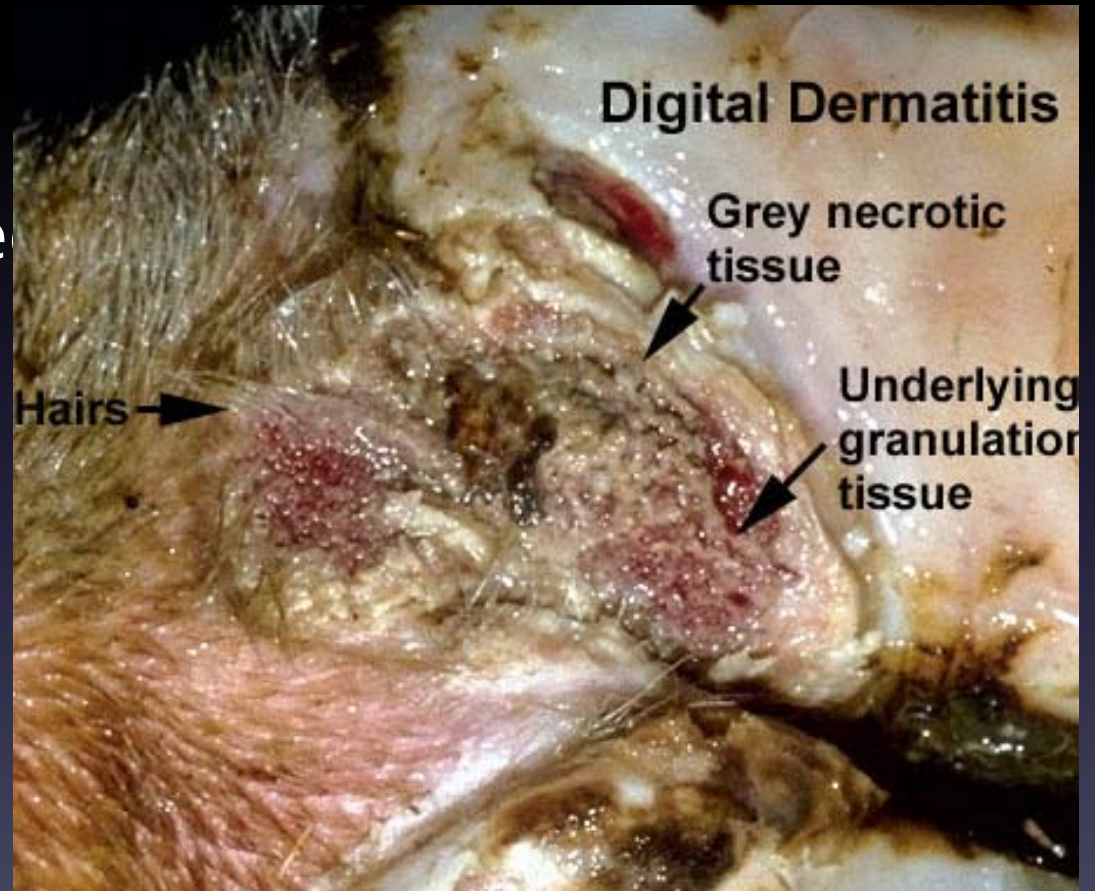
# Foot Rot

- Lesion of the skin between the toes
- Foul smell, yellow green necrosis
- Symmetrical swelling



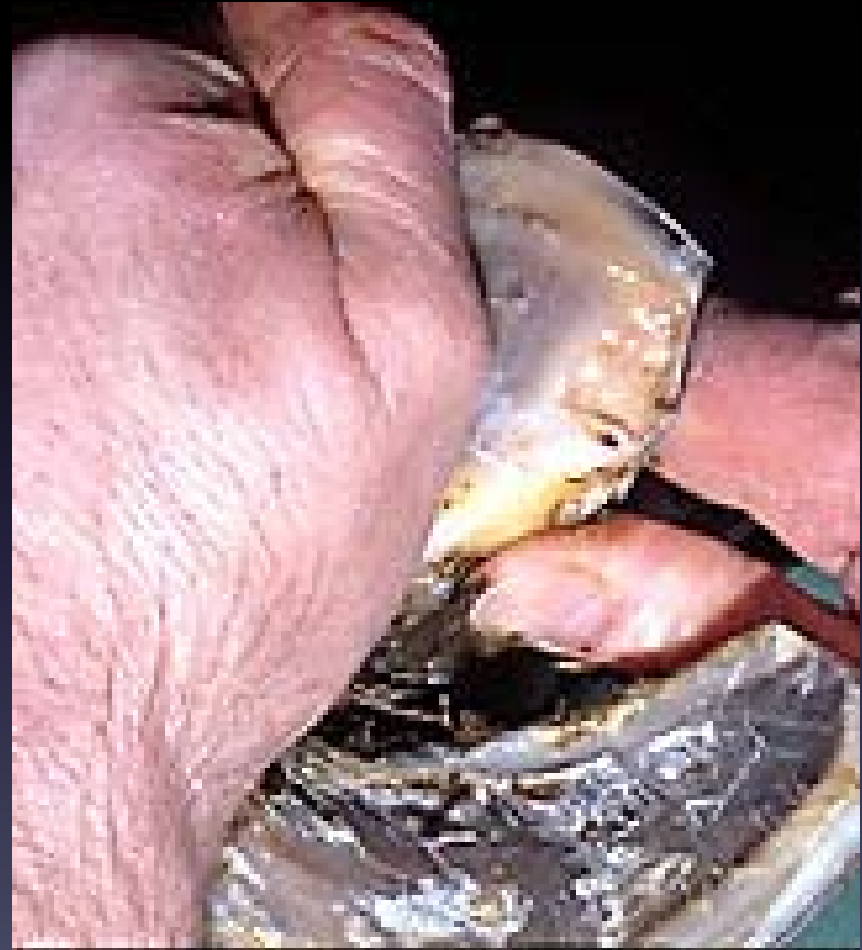
# Hairy Heel Wart

- Typically between heel bulbs
- Eroded area
- Extremely painful



# Abscess

- One claw is hot
- Reacts to pressure
- Typically a lesion in the white line
- Needs to be dug out and debrided



# Sole Ulcer

- Lameness variable
- Responds to pressure on central sole
- Trimming reveals hole in the sole



# Deep Sepsis

- Unilateral swelling
- Extreme lameness
- Prognosis poor
- Avoid at all costs

