

Saskatchewan Forage Variety Demonstrations

Terry Kowalchuk MSc. PAg.
Warman, January 2016

Background



- Forage variety testing since early 90s
- 2014 regulatory change
- Still in place but no submissions of industry lines since 2011.
- Last MOA publication based on testing 2012
- Result is lack of regional variety performance info
- SACFC action item 2014

Why Should You Care?

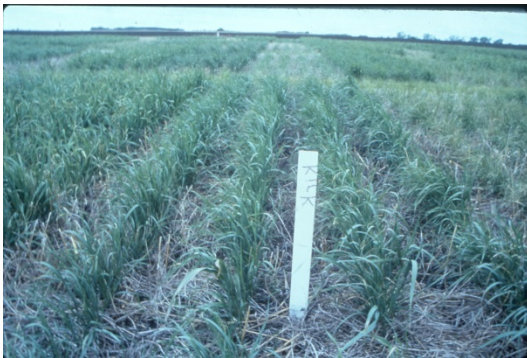
- Consolidation within seed industry more new varieties coming out of U.S.
- Emphasis on forage quality in dairy operations but it is increasingly difficult to know which varieties are top performers for both quality and yield
- Difficult to know which varieties will persist under our conditions

If you have already optimized your forage operations for harvest date, legume/grass blend, harvest and storage techniques, and fertility then the next most important thing to consider is choosing varietie(s) that are suited to your area.



Action Item Update

- Ongoing informal discussions
- SFC meeting – September 2015
- Consensus to move forward
- Draft proposal for a revised system was circulated to stakeholders



Draft SFTEST

- Focus is on key commercial varieties
- Varieties registered for sale
- Similar to WFTEST
 - Multiple sites to cover climatic zones
 - replicated plots with 2 cuts for yield
 - Committee - Seed companies, U of S, MOA, Agri Arm, (**AAFC?**)
 - Data to Dr. Bill Billigetu (new Forage Breeder at U of S)
 - Administration by SFC
 - Extension MOA (insert into seed guide?)

SFTest Goals

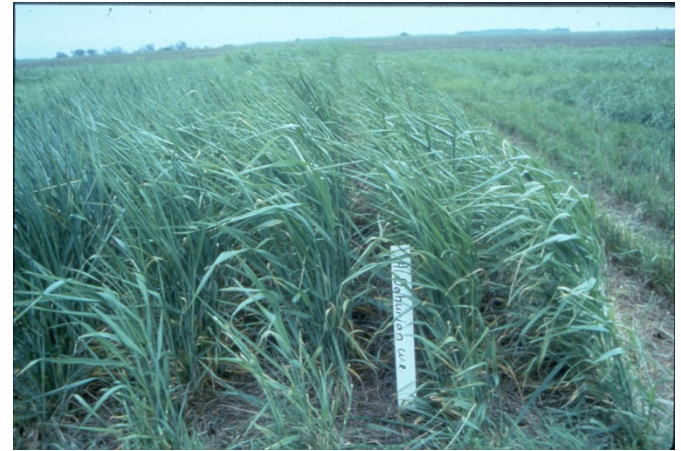
- 1. Ability for public breeders to compare new germplasm**
- 2. Independent assessment for producers, breeders, and seed companies**
3. Coordinated evaluation of registered varieties
4. Share responsibility among stakeholders
5. Uniform testing and adequate data to ensure reliability

Best Approach?

- Industry/MOA –AgriArm/AAFC Partnership
- Targeting core sites - Melfort, Saskatoon, Swift Current, Outlook (possibly Scott)
- AgriARM meeting in October
 - Support for concept at several sites
 - Land, Equipment, and Expertise constraints
 - Standard plot rate \$200 per plot (negotiable?)
- AAFC may be able to provide some in-kind support that would reduce costs?

Next Steps

- AgriArm constraints
- AAFC In Kind support?
- Firm up costs
- Industry funding?
- Potential submission for ADOPT
- Final Agreement
- Seeding Spring of 2017





saskatchewan.ca