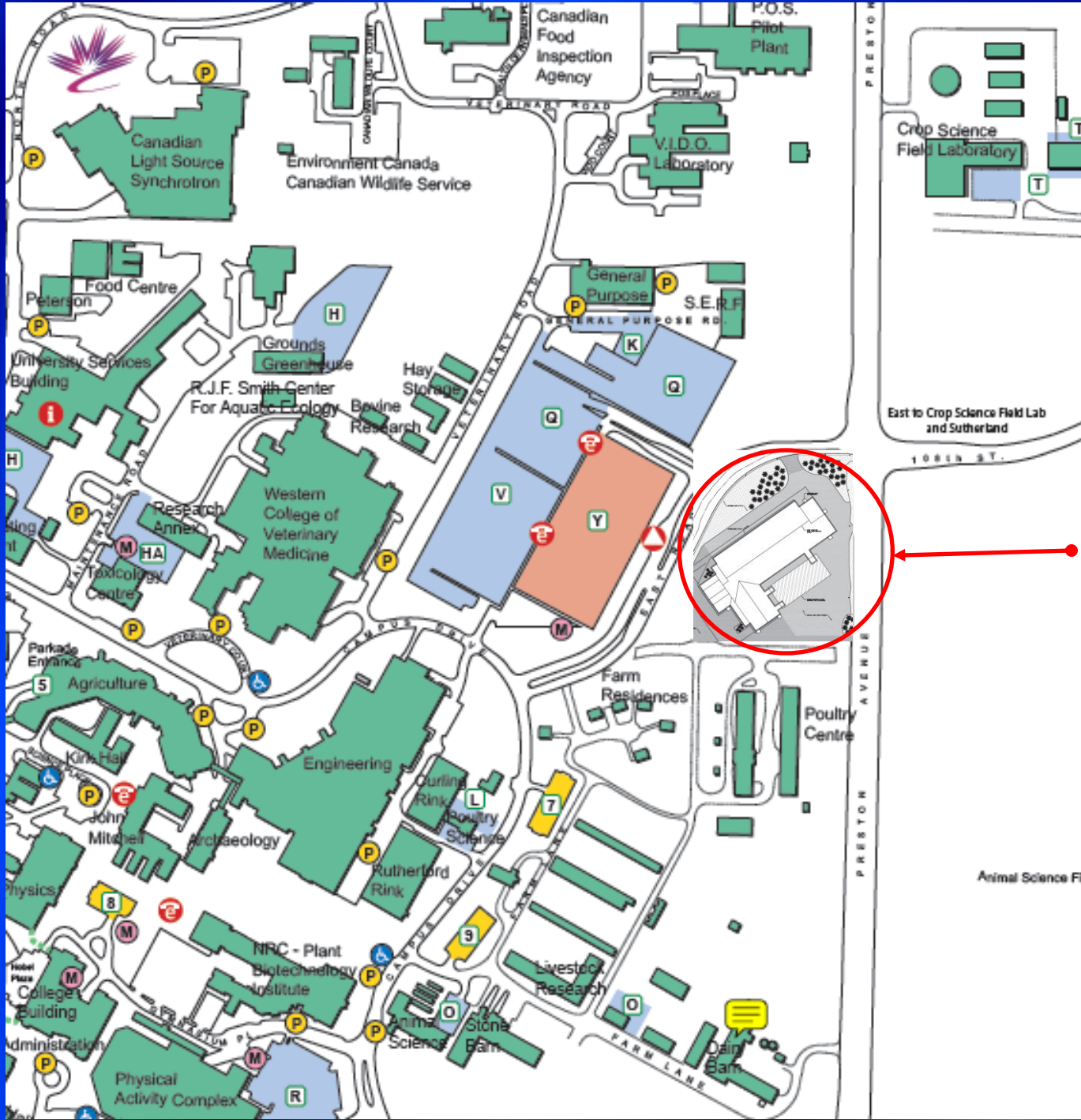




# Dairy Research and Teaching Facility

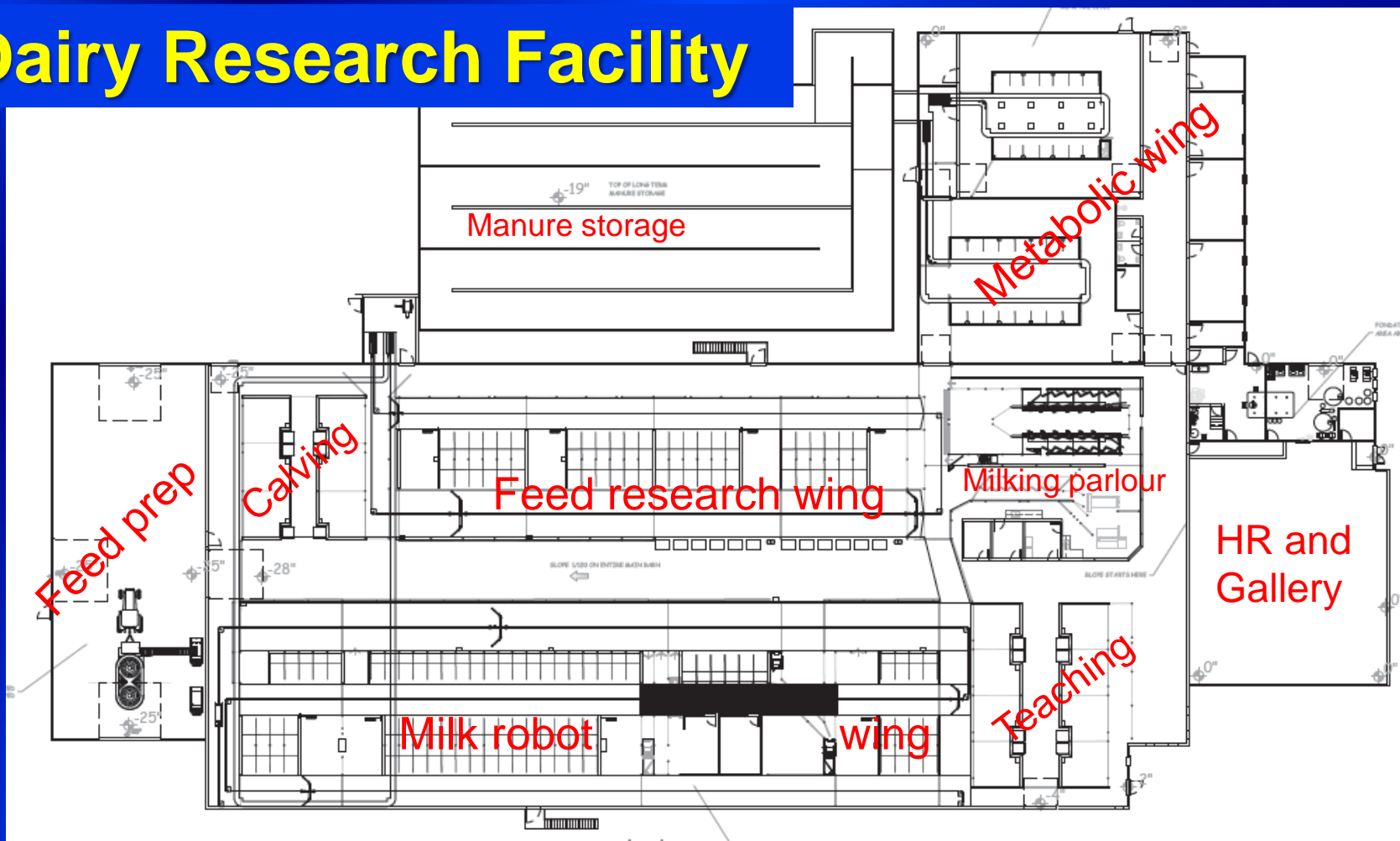




**Dairy  
Research  
Facility,  
U of S  
campus**



# Dairy Research Facility



## Main Wing bottom:

- Milk robot wing
- Transition cow area with computer feeding stations
- Herd management research area
- Box stalls

## Right (Front):

- Public Gallery access
- Office/staff areas and Services

## Main Wing top:

- Feed research wing with 4 pens with 12 cows each
- 8 computer feeding stations per pen
- 2 x 6 milking parlour
- Animal handling and teaching

## Side Wing very top:

- Metabolic Research Wing

# Project Schedule

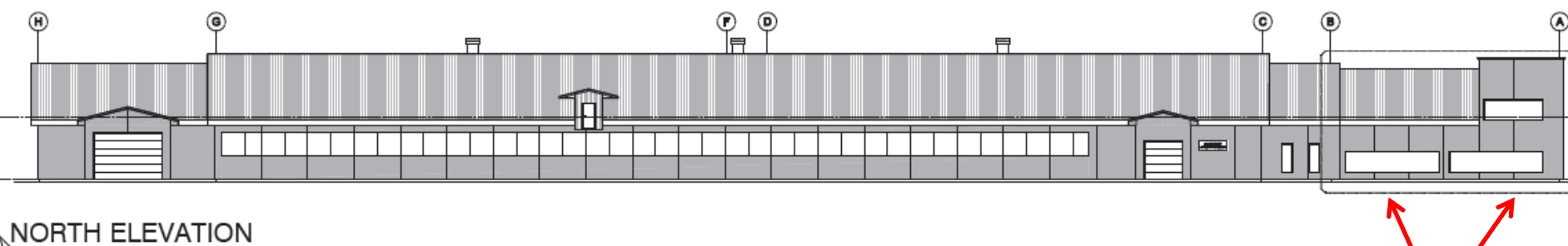
- Tendering of equipment systems (milk, manure, feed): Completed October, 2010
- Tender: September 26, 2011
- Tender closing: October 26, 2011
- Start of construction: Before December 31, 2011
- Completion: Summer 2012

# Capital Budget

Cost	<u>\$10.5 million</u>
University milk quota reinvestment*	\$2 million*
University	\$1 million
Fed/Prov governments (confirmed)	\$4.5 million
Capital campaign target**	\$4 million**

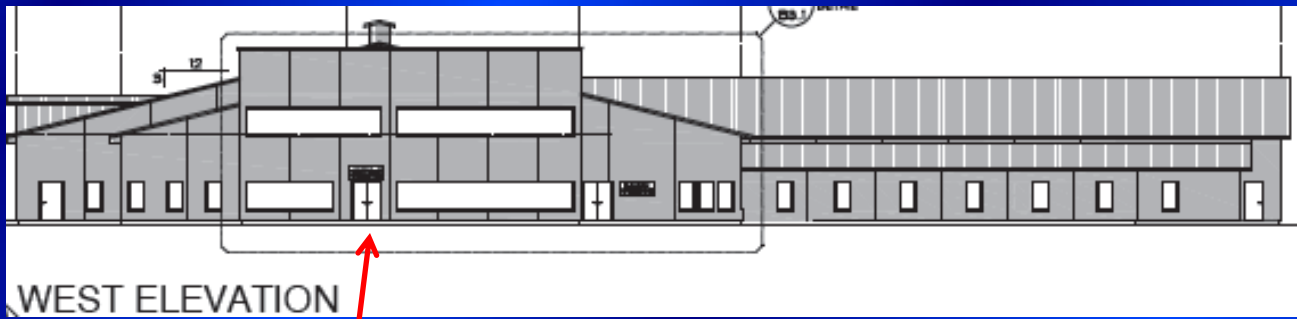
\* Dairy industry, through a separate legal agreement, contributed the milk quota of 49,000 kg butterfat valued at \$4 million. This makes the current university quota available for reinvestment.

\*\* Commitments for \$3.5 million in place.



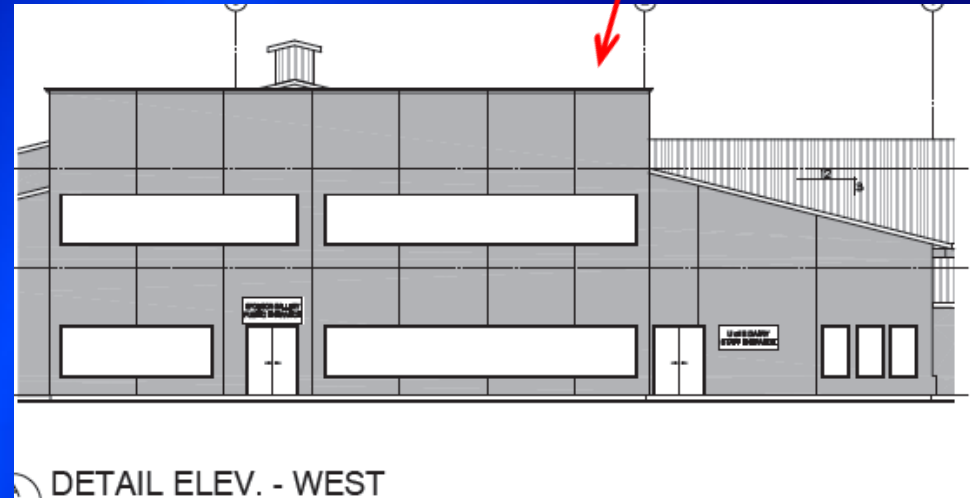
NORTH ELEVATION

Public Gallery  
4,235 sq ft



WEST ELEVATION

Entrance gallery



DETAIL ELEV. - WEST

Expect:

- >5,000 students per year (currently 2,000 grade 2 students tour facility each year).
- National and international delegations
- Industry and the general public
- Develop as a destination point

# Public Gallery Theme: How is Food Produced?

## Example: Canola in Dairy Feed

### Canola Meal

Excellent  
protein feed

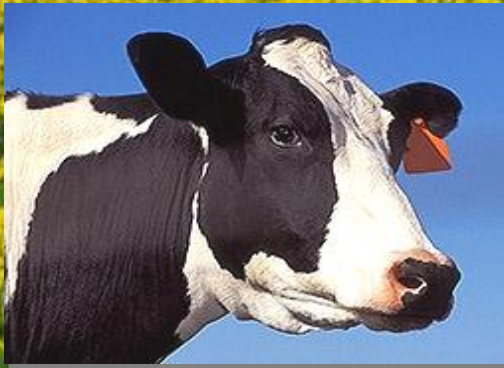
### Canola oil

Oil and energy  
Healthier milk:  
Nutraceuticals  
Unsaturated butter  
Lowers Green House  
Gas emissions

Dairy Cows - Milk

Dairy Processor

Milk, Cheese, Yoghurt, Ice cream





# Public Gallery Exhibit Design

- Construction of the Gallery is in the capital budget, but exhibit design and content are not
- Tendering for an exhibit consultant for the Gallery is underway
- Start with design and fund raising campaign for Gallery exhibit this Fall
- Completion of Gallery exhibit for official opening tentatively September 2011
- Throughout this process work closely with industry partners through the Advisory Board

# Dairy Research and Teaching Facility:

**A Partnership  
with Industry**

**The Advisory  
Board is the  
mechanism to  
promote  
partnership  
collaboration**



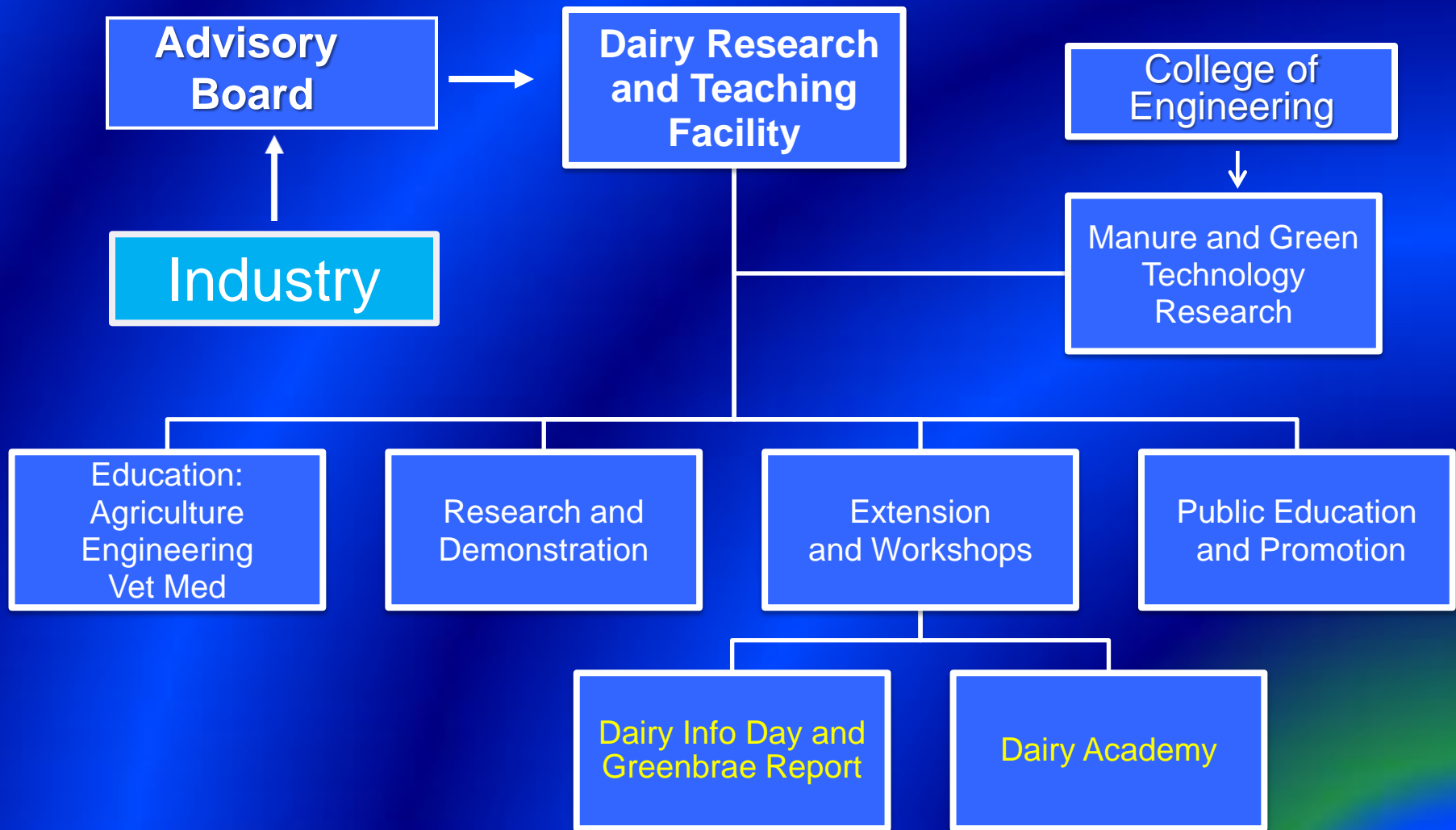
# Advisory Board

## ■ Membership

- Dairy sector SaskMilk 5 plus one observer
- Dairy Processing 1
- Dairy Services Sector 1
- SaskCanola 1 plus one observer
- University 4
- Government Sask 1
- Government Federal 1

■ Chair and Vice-Chair nominated by industry representatives


■ Director appointed in consultation with the Board



Advisory Board is being created  
Fall 2011

# Dairy Academy

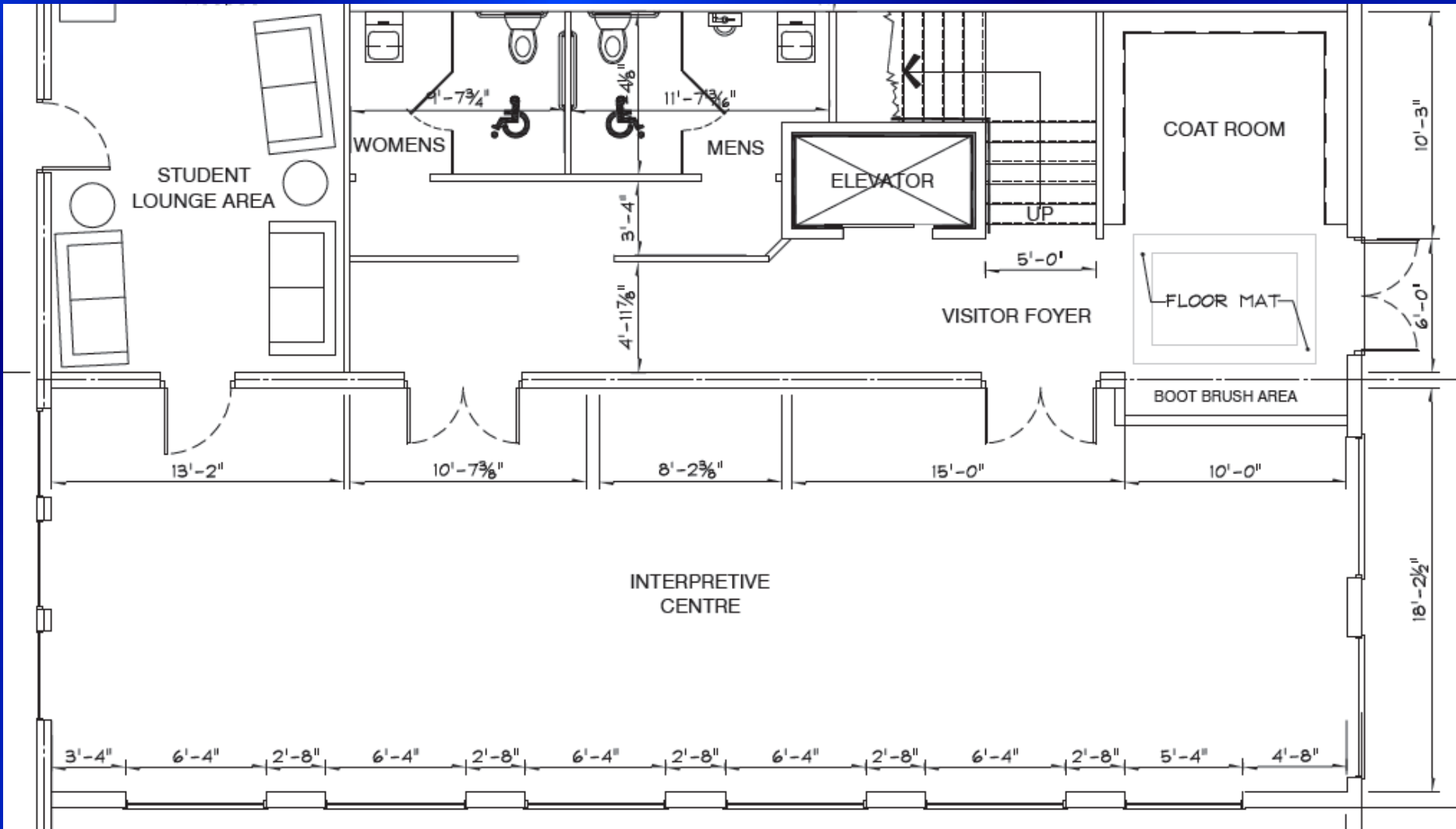
- Proposal under development for Advisory Board
- Concept originated from Denmark, UK and Netherlands
- Effective tool to promote information exchange and learning between knowledge holders: producers, vets, economists and researchers
- Takes place on-line and through meetings and workshops



**B. Laarveld**  
**Animal and Poultry Science**  
**306 966 4972**  
**B.Laarveld@usask.ca**

***THANK YOU***

# Public Gallery Ground Floor

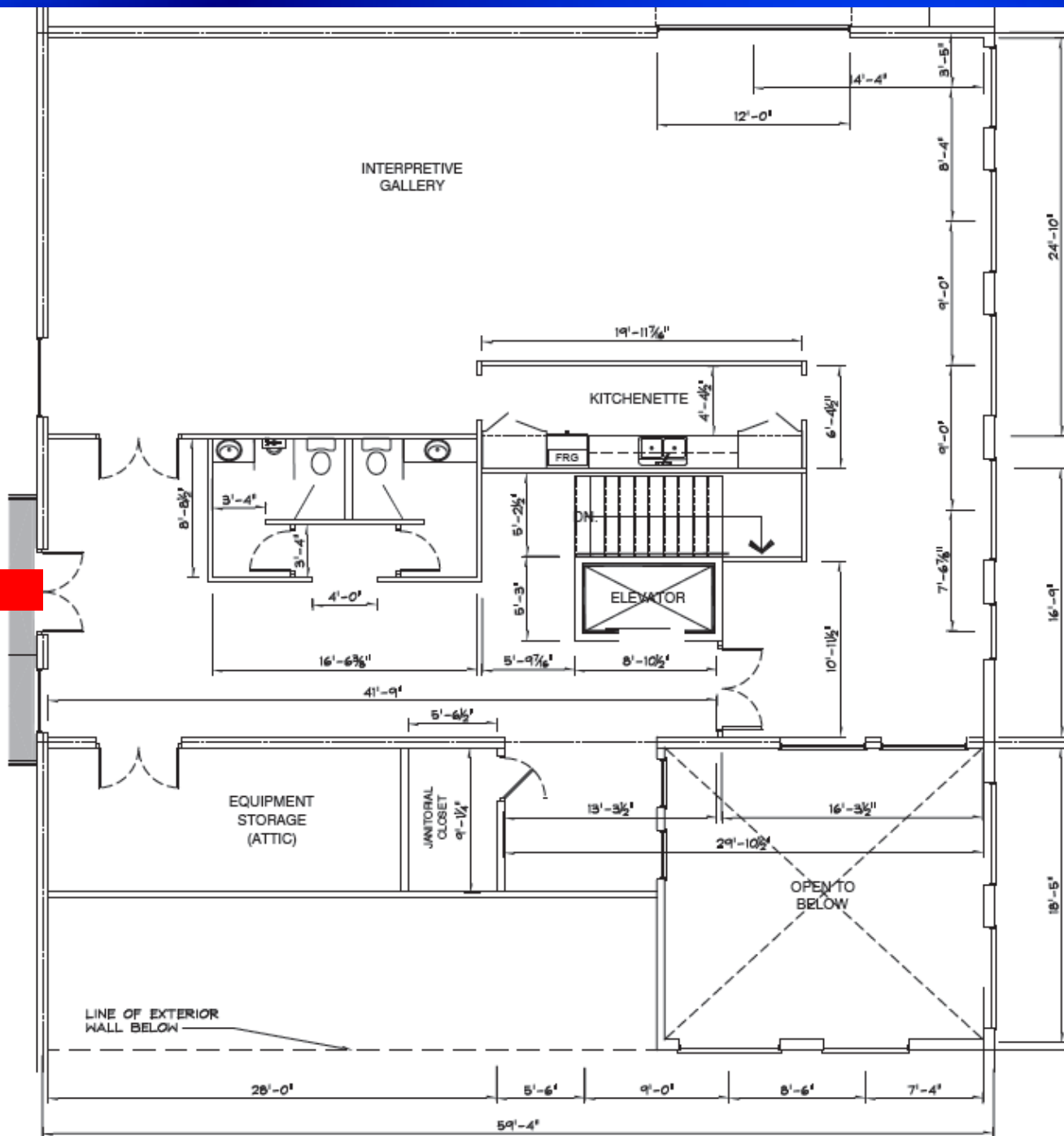


Display space: 58x18 = 1,044 sq ft  
 Service space: 44x16 = 704 sq ft

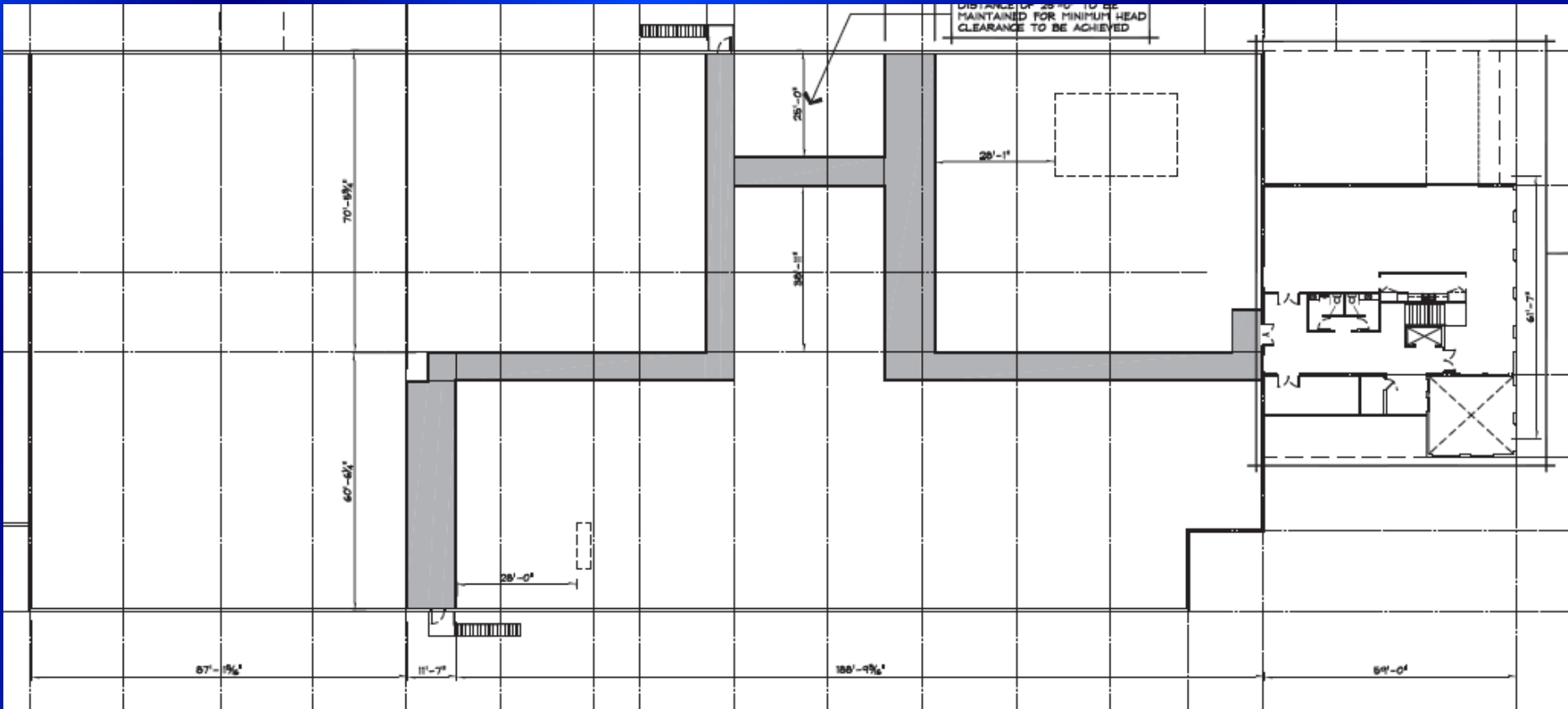
Total 1<sup>st</sup> floor 1,748 sq ft

# Public Gallery: Second Floor with Access to Catwalk

59 x 63 ft =  
3,717 sq ft



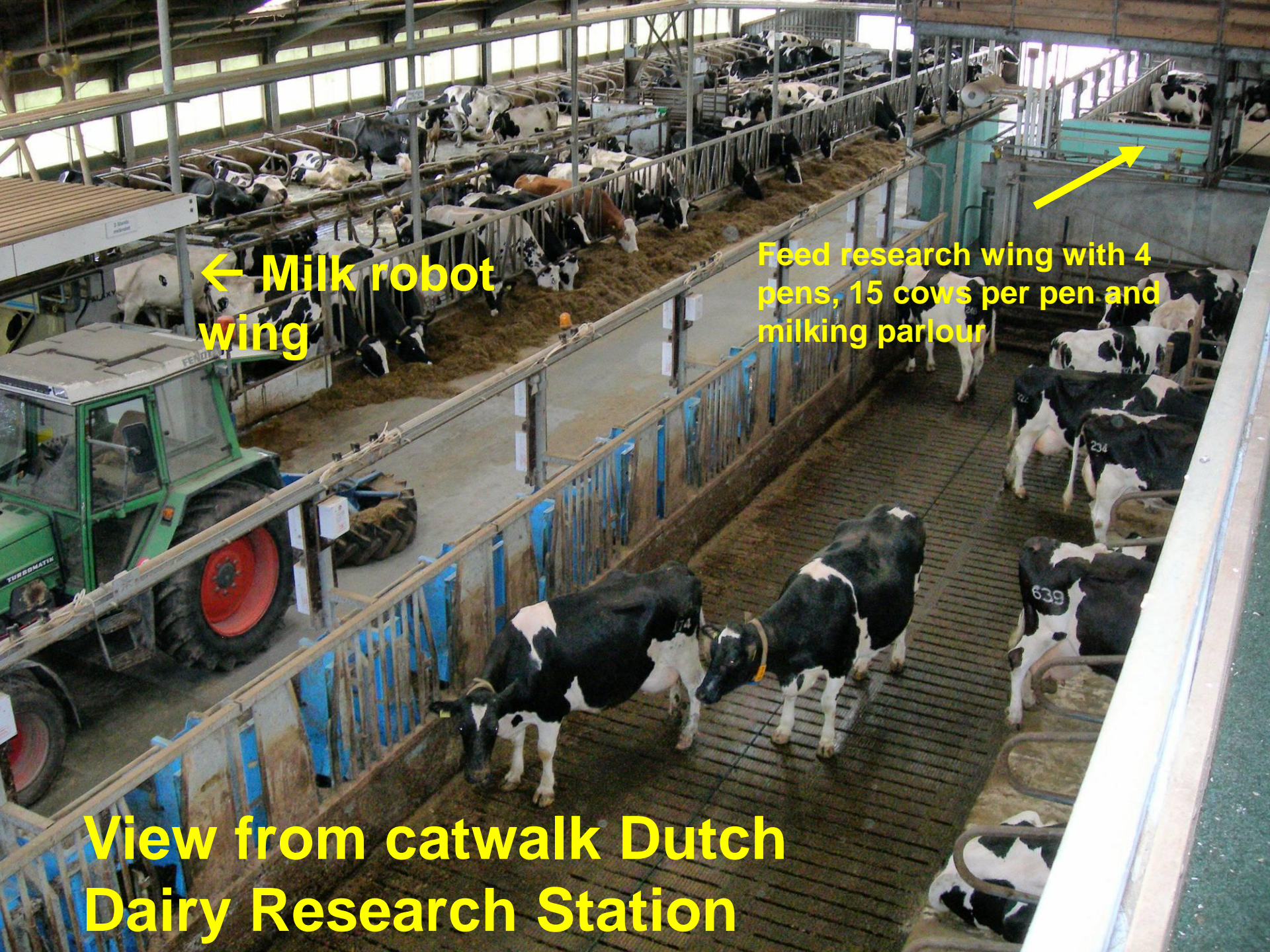




# Second Floor Level Catwalk

# Capital Campaign Target: Facility \$4.5M and Milk Quota \$4M

- Dairy industry provides the milk quota valued at \$4 million in a rental arrangement
  - The annual lease value of approx \$450,000 can be leveraged as industry R&D \$ for government matching (1:2)
  - Can be matched with other industry R&D \$ for projects of mutual benefit (i.e. canola meal for dairy feed) leveraging 1:4.
  - Current U of S quota @ \$2 million reinvested in new facility
- Private donations – major gift
- Crops sector – major gift for capital and research under consideration
- In kind contributions from machinery manufacturers – major contributions and R&D arrangements
- Financial and Service sectors



← Milk robot wing

Feed research wing with 4 pens, 15 cows per pen and milking parlour

View from catwalk Dutch Dairy Research Station