

### SaskMilk in the Community!

#### In this Issue:

Conference Agenda ..2
Research Report.....4
Safe Farm.....5
ProAction.....6
Premise ID .....7
Quota Exchange.....9
Production.....12
SCC.....13
Best Practices.....15
Pasteurizer .....16
Classifieds.....17
Directors .....17



*SaskMilk at 'Flipping for Kids' in support of Breakfast for Learning!*

*SaskMilk sponsors Progressive Agriculture Safety Day!*



*SaskMilk at the Pizza Plot Farm Field Day – thanks to Caroncrest Farms and Benbie Holsteins for their participation in these events!*

# 2014 SASKATCHEWAN DAIRY CONFERENCE



## “Partnering With the Next Generation”

**November 20 and 21, 2014  
Saskatchewan B & C Rooms  
Saskatoon Inn and Conference Centre, Saskatoon**

### Schedule – Day 1

Thursday, November 20<sup>th</sup>

10:30 a.m. Session 1: Interactive Producer Panel – Transitioning for the Next Generation  
Sponsored by:



Lunch – Saskatchewan Holstein Branch and SaskMilk Awards  
Sponsored by:



1:00 p.m. Saskatchewan Holstein Branch Annual General Meeting

2:30 p.m. Milk Break

Sponsored by: **CanWest DHI**

3:00 p.m. Session 2: Jack Rodenburg – Improving Labour and Management with Dairy Facility Design and Cow Flow

Sponsored by:



4:30 p.m. Cocktail Reception – Saskatchewan C  
Complimentary Drink Sponsored by:



6:00 p.m. Dinner – Saskatchewan B

Sponsored by: **DAIRYLAND AGRO SUPPLY**

Presentation by William and Lisa Dyck, Cornell Cream – "Farm to Freezer – Making & Marketing value added dairy products" from Manitoba's first Dairy Producer/Processor

7:00 p.m. Saskatchewan Holstein Branch Social Evening and Silent Auction – Everyone Welcome – No Cost – Saskatchewan B

Friday, November 21<sup>st</sup>

8:00 a.m. Breakfast Buffet  
Sponsored by:



9:00 a.m. SaskMilk 5<sup>th</sup> Annual General Meeting

10:30 a.m. Milk Break  
Sponsored by: Masterfeeds

11:00 a.m. Session 3: Crystal Munro, Creating Excellence – Maximizing Social Media  
Sponsored by:



12:30 p.m. Buffet Lunch  
Sponsored by:



1:30 p.m. Conference Closes

## 2014 Fall Producer Meetings

Registration at 9:30 am, meeting starts at 10:00 am.

October 23<sup>rd</sup> – Swift Current  
F.O.E. Eagles  
1910 S Service Rd W  
Swift Current, SK

October 24<sup>th</sup> – Warman  
Legends Centre\*\*  
701 Centennial Blvd. N.  
Warman, SK

October 27<sup>th</sup> – Fort Qu'Appelle  
Royal Canadian Legion  
Company Avenue (Off Main)  
Fort Qu'Appelle, SK

\*\*Note Venue Change!

## Save the Date!

### Dairy Info Day

### Friday, January 30, 2015



## Research Report October 2014

I hope your summer and fall have went well for you all; still a fair bit of combining to do in my area, another wet year around here!

On the research front, I have three things to talk about this time around. Two of the topics are around funding approval that SaskMilk is a co-sponsor on and the third topic is an update on Dr. Chris Luby's hoof wart project.

Bernard Laarveld received funding from ACAAFS to do research on different feed stuffs such as canola meal and DDGs, this project was co-sponsored by SaskMilk, Milligan Bio-Fuels, North West Terminal and the University of Saskatchewan Industry Liaison Office. The goal is to further process these different feed stuffs, as an example, they believe that they can take 36% canola meal and bring it up to 60%! What this means is that there is a strong likelihood to move some of the canola meal into the aquaculture market (fish farming) and perhaps even into the human food market. This process also appears to remove mycotoxins and ergot.

Greg Penner was successful with his application to ADF and ALMA for funds to research best utilization of feeds and cows in a robotic setting. We must remember that the Rayner Centre is the only facility in western Canada that can do this type of research. As Western Milk Pool partners, it only makes good sense to work together and if the Rayner Centre can offer information to all WMP producers to best fill our quota, so be it! We must also remember that 10% of Saskatchewan's milk producers are now robotic, and Alberta and British Columbia also have 10% of their herds being robotic while Manitoba is currently sitting at 12%. The information gained will not only help robotic farms, but all dairy operations.

Chris Luby has started his heel wart project; they are currently collecting samples from a slaughter house to "fine tune" their equipment and expertise. Chris has hired an excellent grad student to help him with the project. Very shortly Chris will be asking our members for samples from their farms. Both Greg and Chris are hoping to attend the Warman meeting so if you have any questions for them, that would be a great time to ask! Don't forget the fall meetings and please try to attend, this is your organization and your input is greatly valued!

Mark your calendars for January 30<sup>th</sup> 2015, this is the date for the next Dairy Info Day! If anyone has any ideas of what topics they would like to see presented, please contact me at #306-328-4700 (home) or #306-554-8435 (cell) or Deb Haupstein at #306-721-9486 (office).

Thank you

- Jack Ford



## Canadian Farmers with Disabilities Registry (CFWDR)

Presents

### **Train-the-Trainer Workshop on Safe Farm Practices**

This training is geared toward anyone involved in the agricultural industry that is required to communicate safe farm practices to youth, agricultural workers, volunteers, and the general public.

The workshop will provide training on best practices to communicate the message of agricultural safety to different audiences and provide an overview of the basics of safety. It should be attended by anyone that communicates any messages on agricultural safety with youth, workers, volunteers, and the general public.

#### **Saskatchewan workshop information:**

Monday, November 10, 2014

Regina, Saskatchewan

9:00 am – 4:00 pm

Cost \$50.00 (Lunch Included)

Location: TBD

9:00-10:00	Understanding Learning
10:00-10:15	Break/Tradeshow
10:15-11:15	Motivation, Marketing, and Message
11:15-12:00	Morning Review/Group and Individual Exercises
12:00-1:00	Lunch/Tradeshow
1:00-2:00	Farm Safety Review
2:00-2:15	Break/Tradeshow
2:15-3:15	Farm Safety Review
3:15-4:00	Making it all work together/Group and Individual Exercises

This training is being delivered by the Canadian Farmers with Disability Registry with the support of the FCC Ag Safety Fund administered by the Canadian Agricultural Safety Association with funding from Farm Credit Canada.

**Please visit the website below for access to tickets:**

[www.cfwdr.com](http://www.cfwdr.com)

# proAction

The proAction initiative encompasses the already existing Canadian Quality Milk (CQM) program as well as new programs for milk quality, biosecurity, traceability, animal care and environmental sustainability. Implementation of the various elements will be designed to use the infrastructure that already exists for CQM. The details of each program and its implementation plan will be approved by the General Council.

## Vision

Through proAction, Canadian dairy farmers collectively demonstrate responsible stewardship of their animals and the environment, sustainably producing high quality, safe and nutritious food for consumers.

## Guiding Principles

1. proAction will be designed by farmers for farmers;
2. Striving for continuous improvement, proAction will provide reasonable time periods to allow farmers to meet the programs' targets
3. proAction will be mandatory for all dairy farms in Canada;
4. proAction will be transparent and recognized by regulators, stakeholders and society
5. proAction will improve the sustainability of Canadian dairy farms;
6. proAction will be cost-efficient, user-friendly and valuable to farmers;
7. proAction will use existing expertise to minimize the number of required on-farm visits;
8. proAction will have the same timelines for all dairy farms in Canada;
9. proAction will have the same obligations and consequences for all dairy farms in Canada;
10. proAction will use the existing CQM program framework and infrastructure to facilitate consistent administration;
11. proAction will use credible and independent audits;
12. proAction will partner with governments in the implementation of the programs;
13. DFC and member organizations will provide the necessary resources to implement the programs.

## Pilot project on animal care

A number of questions from dairy farmers are about to get some answers as the 2nd pilot project of the Animal Care program comes to a representative number of dairy farms across Canada this fall. The pilot will be launched on October 3 with provincial CQM coordinators, who will in turn train a sample of producers, animal assessors and validators in their provinces.

Farmers will be asked to implement the program on their farms, have their cattle assessed for certain measures such as body condition score, injuries and lameness, and test the validation process. All participants will be asked for feedback and opinions on how to improve the program. This pilot project aims to evaluate the practicality of the program on various sizes and types of dairy farms across the country. In keeping with the guiding principles put forward by your leaders, DFC will seek to verify that the program is useful to the farmers, is cost-efficient and will bring value to both farmers and animals on the farm. Farmers' feedback will be **essential** to the success of the pilot.

A comfortable cow is more productive and the milk is of better quality. Dairy farmers already know this and need to continue to talk about how they achieve it.

We believe in having one integrated program of farm practices that speak to quality and sustainability. It must make good business sense for farmers, while providing assurance to our buyers (customers and consumers) that dairy farmers are responsible food producers and are committed to continuous improvement.

*We believe sustainability & trust will support sales...* This is why the focus is on our marketing campaign – canadianmilk.ca - is currently about farmers' commitment to quality – the first of the proAction modules to be reached by 100% of farmers. Over the years, as farmers are certified, our marketing campaigns will feature farmers' dedication to food safety, care, etc. - *September 26, 2014 This Week @ DFC*

## **Saskatchewan Premises Identification (PID)**

The Saskatchewan Premise Identification (PID) program is an integral part of Canada's traceability system. PID utilization will be mandatory for movement reporting in the amended Federal Traceability Regulation that is planned to be in force by early January 2016.

If you were already registered on the Canadian Cattle Identification Agency's PID Database you will have received a letter earlier this summer from Saskatchewan Agriculture. The CCIA Database is being phased out in Saskatchewan and being replaced by the Saskatchewan Premises Identification (PID) program.

PID facilitates linking livestock and poultry to geographic locations for planning and responding to animal health issues and emergency response and is one of the three pillars of a livestock traceability system. The other two pillars are animal identification and animal movement reporting. The plan of the national traceability system includes all livestock and poultry species produced in Canada.

Traceability is one of the programs under the DFC ProAction Initiative. Currently 93.5% of dairy farmers in the country have their premises identified with an official premises –ID number (PID). One of the focuses of the DFC Livestock Traceability Working Group is to work with provincial organizations and provincial governments to complete premise identification of all dairy farms.

To accomplish this SaskMilk is entering into an information sharing agreement with Saskatchewan Agriculture and will provide general information to the Saskatchewan Premises Identification Program in order to have all SaskMilk licensed dairy farms issued a PID number.

**If you do not want SaskMilk to provide this information and have a PID number assigned to you, please contact Deb Haupstein on or before October 31, 2014.  
306-721-9486    [deb.haupstein@saskmilk.ca](mailto:deb.haupstein@saskmilk.ca)**



# Premises identification

## FOR THE NATIONAL LIVESTOCK TRACEABILITY SYSTEM

### WHY IDENTIFY THE PREMISES?

Knowing where livestock and poultry are located provides valuable information in responding to animal disease outbreaks and food safety issues. This allows for a swift and accurate response in the event of an animal disease outbreak or natural disaster.

### WHAT ARE "PREMISES" IN THE CONTEXT OF TRACEABILITY?

According to the definition given by Agriculture and Agri-Food Canada: "a premises is any parcel of land on which animals, plants or food are grown, kept, assembled or disposed of".

The "premises" are defined by a legal land description of the lot, or in its absence, by its geo-coordinates.

### PREMISES INCLUDE:

- Farms and stables
- Pastures and community pastures
- Feedlots
- Assembly yards
- Abattoirs
- Auction and livestock sale facilities
- Racetracks and competition facilities
- Rendering plants
- Exhibitions and fairgrounds
- Veterinary facilities
- Livestock and poultry research facilities
- Hatcheries
- Insemination centres
- Zoos and petting zoos

### WHAT IS A PREMISES IDENTIFICATION NUMBER?

It is a unique identifier, based on national standards, that is assigned to a "premises" within a province or territory.

The national standard for premises-ID numbers is:

- 2 letters for the province;
- + 6 alpha-numeric characters;
- + 1 check digit.

### Examples of premises-ID:

**AB1234561**  
**ON1234565**

### HOW TO USE IT?

The premises-ID number is the only location identifier for animal movement reporting.

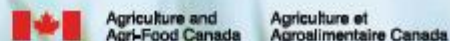
### HOW DO I GET MY PREMISES-ID NUMBER(S)?

The identification of premises is the responsibility of the provincial government.

**We invite you to contact your provincial association or your provincial department of agriculture directly for further information.**

### SASKATCHEWAN

Saskatchewan Ministry of Agriculture  
Online: [www.agriculture.gov.sk.ca/PID](http://www.agriculture.gov.sk.ca/PID)  
Phone: 1-866-457-2377





# QUOTA EXCHANGE

The market-clearing price established for the October 2014 Quota Exchange was **\$29,000.00**

The next Quota Exchange will be held on **November 15, 2014**. All offers to sell and bids to purchase quota through the Quota Exchange must be received at the SaskMilk office by midnight, **November 6, 2014**. SaskMilk recommends that offers and bids be submitted well in advance of the deadline date to ensure adequate time for corrections, if necessary.

When making bids on the Quota Exchange, the price on offers to sell quota is the minimum price that the producer is prepared to accept for that quota. Only if the market-clearing price is equal to or greater than the producer's minimum price will that producer qualify for participation in the Exchange. Conversely, the price on offers to purchase quota is the maximum price that the producer is prepared to pay for that quota. Only if the market-clearing price is equal to or less than the producer's maximum price will that producer qualify for participation in the Exchange. The clearing price is set at the price where the smallest difference exists between the accumulated volume offered for sale and the accumulated volume bid to purchase.

The results of the Quota Exchange are outlined in the following Table.

## OCTOBER 2014 QUOTA EXCHANGE RESULTS SUMMARY

<b>Market Clearing Price per kilogram of butterfat</b>	<b>\$ 29,000.00</b>
<b>Daily Kilograms offered to Purchase</b>	<b>3.00</b>
<b>Kilograms offered to Sell</b>	<b>36.00</b>
<b>Kilograms sold</b>	<b>3.00</b>
<b>Number of Producers</b>	
- offered to purchase	<b>1</b>
- purchased quota	<b>1</b>
- offered to sell	<b>6</b>
- sold quota	<b>2</b>

## OCTOBER 2014 QUOTA EXCHANGE CLEARING PRICE RESULTS

Price (\$/daily kg b.f.)	No. of Sellers	Cumulative Sellers	Daily Kgs b.f. offered for sale	Cumulative sales	Cumulative Sales less Cumulative purchases	Cumulative purchases	Daily Kgs b.f. offered to purchase	Cumulative Buyers	No. of buyers
<b>\$29,000.00</b>	<b>2</b>	<b>2</b>	<b>3.33</b>	<b>3.33</b>	<b>0.33</b>	<b>3.00</b>	<b>0.00</b>	<b>1</b>	<b>0</b>
\$30,000.00	1	3	5.00	8.33	5.33	3.00	0.00	1	0
\$30,500.00	1	4	12.67	21.00	18.00	3.00	3.00	1	1
\$32,000.00	1	5	10.00	31.00	31.00	0.00	0.00	0	0
\$33,500.00	1	6	5.00	36.00	36.00	0.00	0.00	0	0

**\* Please contact Bev Solie at 306-949-6999 for inquiries dealing with quota management sheets, the Quota Exchange, for transfer credits, or with any other quota transactions.**

## TRANSFER CREDIT SUMMARY REPORT

MONTH	# OF PRODUCERS TRANSFER IN	# OF PRODUCERS TRANSFER OUT	TOTAL KGS BUTTERFAT
September	13	12	12,097
October	18	14	14,374
November	18	16	14,816
December	16	16	12,105
January, 2014	20	17	19,783
February	23	16	19,294
March	26	21	21,973
April	16	12	11,722
May	15	12	12,618
June	10	8	7,204
July	15	12	13,322
August	15	12	11,915
September	19	18	23,202

## PRIVATE TRANSFERS PROCESSED

MONTH	DAILY KILOGRAMS
Oct	0.00
Nov	10.00
Dec	110.26
Jan-2014	522.98
Feb	0.00
Mar	132.84
Apr	419.23
May	145.23
June	18.50
July	20.00
Aug	615.73
Sept	336.41

## OVER QUOTA (OVER 5 DAYS) REPORT BY MONTH

MONTH	# OF PRODUCERS	KGS BUTTERFAT
September	7	653
October	8	563
November	11	1,375
December	20	5,216
January, 2014	21	5,133
February	17	2,940
March	19	2,338
April	20	4,163
May	13	1,411
June	15	1,791
July	11	1,266
August	3	354
September	2	102

## SUMMARY REPORT OF CREDITS September, 2014 – 165 PRODUCERS

DAYS	# OF PRODUCERS	POSITIVE CREDITS ACCUMULATED (KGS OF BUTTERFAT)
+ 5	2	751
0 to + 5	26	7,847
TOTAL	28	8,598
DAYS	# OF PRODUCERS	NEGATIVE CREDITS ACCUMULATED (KGS OF BUTTERFAT)
-15	16	-23,003
-10 to -15	31	-57,047
-5 to -10	50	-67,528
0 to -5	40	-17,025
TOTAL	137	-164,603

## LOST OPPORTUNITY REPORT

MONTH	# OF PRODUCERS	LOST OPPORTUNITY (KGS OF BUTTERFAT)
September	19	6,589
October	16	6,941
November	11	1,979
December	10	2,487
January, 2014	8	1,723
February	8	542
March	3	240
April	7	1,104
May	10	1,792
June	5	2,823
July	9	3,717
August	17	7,315
September	16	3,722

## WEIGHTED AVERAGE COMPONENT TESTS & PRICES September, 2014

Components	Average Test	Price per kilogram Class 1 to 5
Butterfat	4.0009	12.111863
Protein	3.3292	9.111921
Other Solids	5.6800	1.335165

Based on the average component tests for the province, the average price received was **\$86.377** per hectolitre. **The average butterfat price received per kilogram was \$21.59**

### SASKATCHEWAN MILK POOL RESULTS September 2014

Milk Sale Revenue	\$ 14,315,803.19
Western Milk Pool	\$ 2,103,239.30
Plant of Last Resort Service	\$ <u>(56,006.65)</u>
<b>Total Pool Value</b>	<b>\$ 16,363,035.84</b>

In September, Saskatchewan had a monthly CDC allocation of **785,984 kilograms** of butterfat. In the month of September, Saskatchewan production was **-28,970** of butterfat **under** and cumulatively **under** by **-115,663 kilograms** of butterfat. On a percentage basis, Saskatchewan is **-1.24%** within our CDC allocation flexibility limits based on the Continuous Quota model. The **-1.50%** lower flexibility limit is in effect.

	(1) Monthly Total Production  Kgs bf	(2) Total Monthly CDC Quota Allocation  Kgs bf	(3) Monthly Over or (Under) Production  Kgs bf  col. 1 – 2 = 3	(4) Lower Flexibility Limit <b>(1.5%)</b>  Kgs bf  col. 9 * -1.5%	(5) Upper Flexibility Limit <b>1.0%</b>  Kgs bf  col. 9 *1.0%	(6) Cumulative Over or (Under) Production with limits  Kgs bf	(7) Cumulative Over or (Under) Production with limits in - %  col. 6 / 9	(8) Over Quota or (Lost Production Opportunity)  Kgs bf	(9) Rolling 12 Month Total Quota  Kgs bf
<b>Sep-13</b>	743,013	737,951	5,061	(134,773)	44,924	<b>(34,067)</b>	<b>-0.38%</b>	0	8,984,855
<b>Oct-13</b>	782,805	796,837	(14,032)	(135,081)	45,027	<b>(48,227)</b>	<b>-0.54%</b>	0	9,005,391
<b>Nov-13</b>	758,797	770,745	(11,948)	(135,189)	45,063	<b>(60,135)</b>	<b>-0.67%</b>	0	9,012,580
<b>Dec-13</b>	794,733	805,742	(11,009)	(135,518)	45,173	<b>(70,182)</b>	<b>-0.78%</b>	0	9,034,530
<b>Jan-14</b>	789,851	769,397	20,454	(135,547)	45,182	<b>(49,676)</b>	<b>-0.55%</b>	0	9,036,438
<b>Feb-14</b>	705,370	709,836	(4,466)	(135,940)	45,313	<b>(66,474)</b>	<b>-0.73%</b>	0	9,062,696
<b>Mar-14</b>	778,842	771,216	7,626	(135,992)	45,331	<b>(58,458)</b>	<b>-0.64%</b>	0	9,066,120
<b>Apr-14</b>	759,580	765,873	(6,293)	(136,382)	45,461	<b>(64,773)</b>	<b>-0.71%</b>	0	9,092,104
<b>May-14</b>	794,737	781,223	13,514	(136,885)	45,628	<b>(57,303)</b>	<b>-0.63%</b>	0	9,125,672
<b>Jun-14</b>	761,220	759,569	1,651	(137,511)	45,837	<b>(58,840)</b>	<b>-0.64%</b>	0	9,167,373
<b>Jul-14</b>	770,028	768,975	1,053	(138,077)	46,026	<b>(57,522)</b>	<b>-0.62%</b>	0	9,205,114
<b>Aug-14</b>	755,864	775,617	(19,753)	(138,628)	46,209	<b>(86,128)</b>	<b>-0.93%</b>	0	9,241,841
<b>Sept-14</b>	757,014	785,984	(28,970)	(139,355)	46,452	<b>(115,663)</b>	<b>-1.24%</b>	0	9,290,311

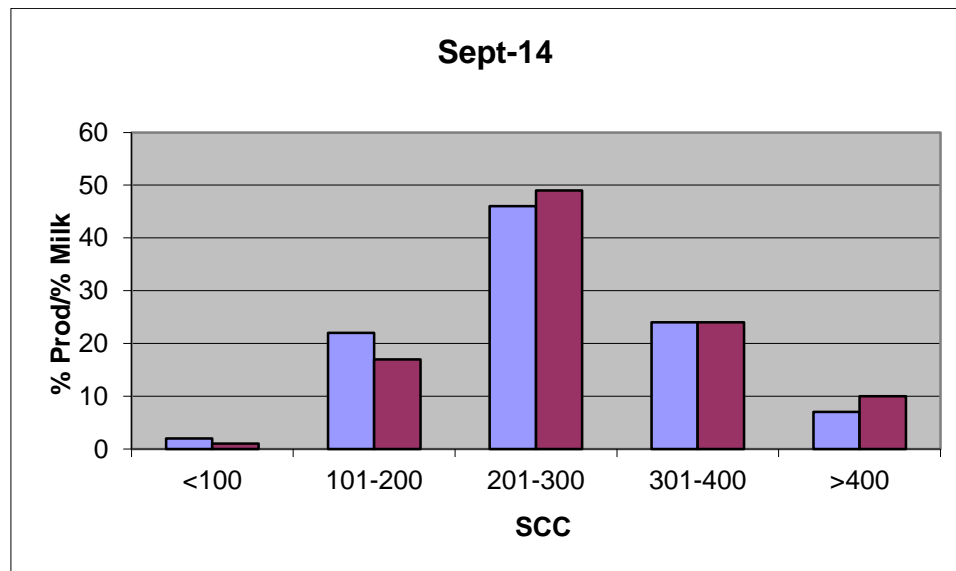
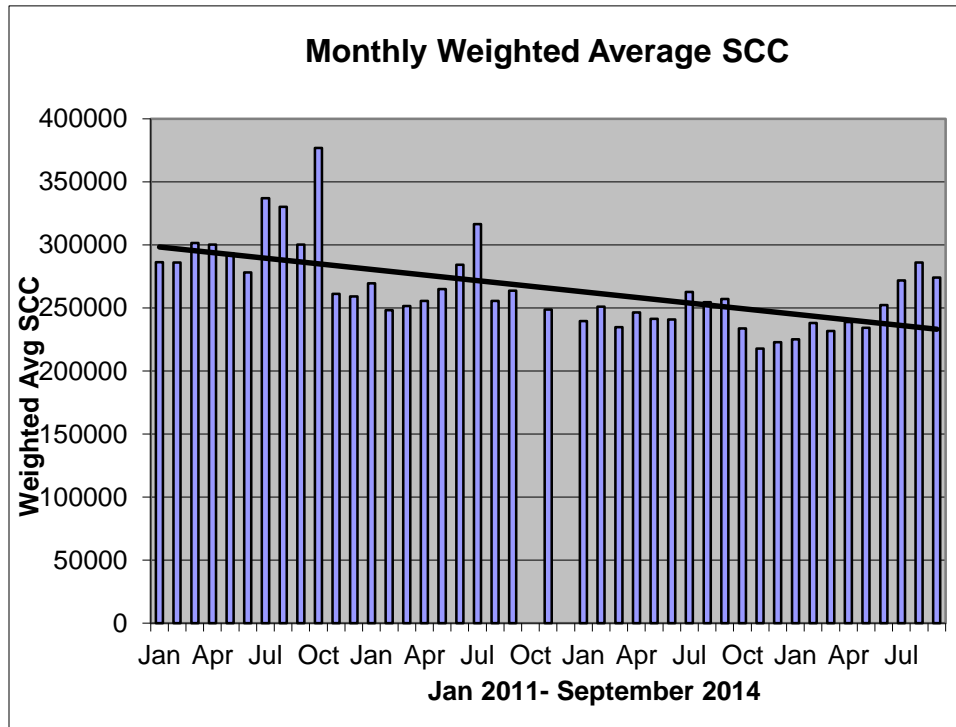
- (1) Monthly Production in Saskatchewan
- (2) Total Monthly Quota = Class 1 sales + Monthly MSQ + Carry Forward
- (3) Difference between the monthly production (1) and the total monthly quota (2)
- (4) The Lower Flexibility Limit is -1.5% of Rolling 12 Month Total Quota (9)
- (5) The Upper Flexibility Limit is 1.0% of Rolling 12 Month Total Quota (9)
- (6) Previous Month Cumulative Over or (Under) Production + Current Monthly Over or (Under) Production (capped at lower or upper limit if applicable)
- (7) Equal to Column (6) expressed as a percentage basis within the flexibility limits
- (8) Over Quota or (Lost production opportunity) outside of flexibility limits
- (9) Total Monthly CDC Quota Allocation for the previous 12 months

## SCC LIMIT NOW 400,000

Effective January 1, 2013, the SCC limit has changed to 400,000. Penalties and violations will be applied based on the new limit.

The following graphs provide producers with an overview of the Provincial Somatic Cell Count weighted average on a monthly basis as well as a breakdown of the % of producers in each SCC level for the month of September 2014.

If you have any questions or comments you can contact: Deb Haupstein at 306-721-9486.



## INHIBITOR TEST STATIONS

SaskMilk has established a number of inhibitor test stations around the province. Producers needing to check their bulk tanks for inhibitors can take a sample to the test station closest to their location.

Charm test strips are available to test for:

**Beta-Lactams**- the Charm 3 SL3 Beta Lactam test strip tests for amoxicillin, ampicillin, ceftiofur, cephalosporin, cloxacillin, and penicillin G

**Tetracyclines**- the Charm Tetracycline test strip tests for chlortetracycline, oxytetracycline and tetracycline.

**Sulfas**- the Charm Sulfa test strip tests for sulfacetamide, sulfachlorpyridazine, sulfadiazine, sulfadimethoxine, sulfadoxine, sulfaethoxypridazine, sulfamerazine, sulfamethazine, sulfamethizole, sulfamethoxazole, sulfamethoxypridazine, sulfapyridine, sulfaquinolaxone, sulfathiazole, and sulfisoxazole.

Test stations are located at the following locations:

1. Swift Current, SK - Agrifoods truck bay - 675 Cheadle Street West  
Office 306-773-1097 or Rodger Ruf 306-741-3261
2. Harris, SK - Cairnside Farm – Wes Cairns 306-665-4807
3. Star City, SK - Star City Colony - Reuben Tschetter 306-921-9381
4. Grenfell, SK - Jim Ross 306-697-2232
5. Yorkton, SK - Ford Dairy Farms Inc. - Bud and Margaret Ford 306-782-7240
6. Saskatoon, SK – Agrifoods Truck Bay - east of the Saputo plant receiving bay  
lead hand - Jim or Clint 306-664-0202 after hours: 306-668-8135

Charm tests strips and Charm testers are now available for purchase through SaskMilk. Agrifoods is now carrying SNAP test kits for tetracyclines as well as beta lactams.

For further information you can contact: Deb Haupstein 306-721-9486



### If You Can't Ship It - Test It!

**BSE surveillance is still important and every animal tested makes a difference.**

**Support your cattle industry by having your 4-D (dead, diseased, dying or downer) cattle tested for BSE.**

**For more information, call the Canadian Food Inspection Agency at 1-877-727-5273.**

# Code of Practice

## 1.9 Pastures, Yards, and Transfer Alleys

### *Pastures and yards*

Pasture and yards can be used to provide cows with comfortable walking and lying surfaces. Pasture in particular has been found to reduce lameness rates. Time off hard (i.e., concrete) surfaces is an important factor for reducing lameness rates. Access to pasture or a yard can be used as one option for meeting this goal (15). Outside yards, laneways and pastures may be hazards during wet conditions. High traffic areas in yards, at feeders, on trackways and at gateways can be built with geotextile fabric techniques that reduce the loss of soil fines and allow water to drain. When built and maintained correctly, the areas decrease exposure to mud and contribute to clean cows.

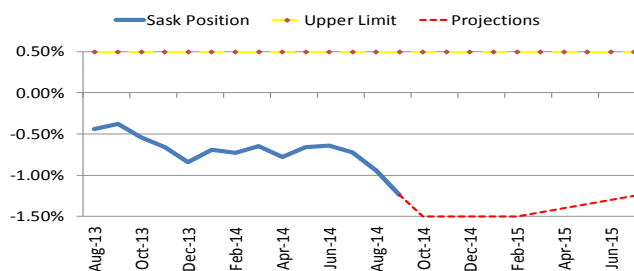
### *Transfer alleys*

Alleyway floors are generally made of concrete and are a place where manure accumulates, so frequent and thorough alley scraping is needed. Cows spending excessive time on hard surfaces under wet, manure-contaminated conditions are more likely to have infectious diseases of the foot (7). Cows benefit from rubber trackways on slatted floors in transfer alleys to and from the milking parlor.

### **RECOMMENDED BEST PRACTICES**

- a. adjust cattle gradually to pasture feeding to prevent digestive problems
- b. use geotextile fabric to build laneways, trackways to pastures, high-traffic gateways, yards, or outdoor feeding areas
- c. provide cattle with pastures and yards that have good drainage
- d. ensure pastures and fences (including electric fences) are safe and properly maintained
- e. limit exposure to areas that may compromise animal health and safety
- f. provide clean water and supplementary feed on a daily basis to meet recommended nutritional needs if pasture forage is not adequate
- g. ensure cattle are provided with shade and protection from inclement weather if provided outdoor access (e.g., natural or artificial shade in the summer, or shelter in the winter, dry area during wet weather)
- h. provide handling facilities at pastures that are far from the barn
- i. inspect and maintain cow paths to minimize risk of injury and lameness (e.g., sharp protrusions)
- j. minimize the time cows spend in concrete alleyways
- k. flush and/or scrape alleyways 2-3 times per day.

### SK Milk Production



# Saskatchewan Dairy Pasteurizer Program

## Growing Forward 2

Growing Forward 2 (GF2) is a federal-provincial-territorial policy framework of agricultural programs.

As a part of this biosecurity awareness and education of best practices in the industry the **Saskatchewan Dairy Pasteurizer Program** has been developed.

### SASKATCHEWAN DAIRY PASTEURIZER PROGRAM

This program will reimburse producers for 50% of the cost of purchasing a pasteurizer to a maximum of \$5,000 per producer.

To be eligible for program funding, producers must have:

- Purchased a colostrum pasteurizer between December 1, 2013 and November 30, 2014;
- Submitted a copy of the paid receipt to SaskMilk along with their signed application form.

To date, 32 pasteurizers have been purchased. Depending on the price, there is funding available for approximately 1-2 more pasteurizers.

For further information please contact: Deb Haupstein 306-721-9486

**PLEASE NOTE: FUNDING FOR THIS PROGRAM EXPIRES  
November 30, 2014.**





## QUOTA LISTING or CLASSIFIED AD SERVICE

SaskMilk offers a free quota listing service as part of its Newsletter. Anyone wishing to sell or purchase quota and/or cows or miscellaneous dairy equipment is welcome to contact the SaskMilk office at (306) 949-6999. All prices and negotiations will be independent of SaskMilk. **Please note that ads will be posted in two issues and will then be removed unless SaskMilk is notified otherwise.**

### Classifieds

#### **Equipment for sale at Kingsford Farms.**

8-4' Tunnel Ventilation fans (Better Air), 8-24" basket fans, 60- stall dividers and posts for 16' head to head stalls (with neck rails brisket boards), Houle pit mixer and manure pit piston pump, Reel Augie 3250 batch mixer, Houle 60' lagoon agitator, 3000 gal liquid manure wagon. **More equipment available.** Contact Dan 306-421-2704 or Darren 306-421-3808

Looking for a used DeLaval FloMaster pro milk meter. **\*preferably only the load cells** Contact: Jonathan Hofer Simmie Colony 306-774-9821

## SASKMILK BOARD OF DIRECTORS

Melvin Foth – Chair  
(306) 225-4678  
[fvl@sasktel.net](mailto:fvl@sasktel.net)

David Entz – Vice Chair  
(306) 626-3300  
[davidentz3662@gmail.com](mailto:davidentz3662@gmail.com)

Jack Ford  
(306) 328-4700  
[jackford@sasktel.net](mailto:jackford@sasktel.net)

Brad Kornelius  
(306) 239-4200  
[bradkornelius@gmail.com](mailto:bradkornelius@gmail.com)

Isaac Klassen  
(306) 249-4435  
[isaac00@sasktel.net](mailto:isaac00@sasktel.net)

Jim Ross  
(306) 697-2232  
[jimleeholsteins@sasktel.net](mailto:jimleeholsteins@sasktel.net)

Sheldon Peifer  
(306) 862-9470  
[dspeifer@sasktel.net](mailto:dspeifer@sasktel.net)

Brian Lindenbach  
(306) 771-2721  
[blindenbach@imagewireless.ca](mailto:blindenbach@imagewireless.ca)

Ryan Enns  
(306) 220-7993  
[corandryan@gmail.com](mailto:corandryan@gmail.com)

For further information, please contact the SaskMilk office.  
444 McLeod Street  
Regina, Saskatchewan S4N 4Y1  
Telephone: (306) 949-6999  
Fax: (306) 949-2605  
Website: [www.saskmilk.ca](http://www.saskmilk.ca)  
Email: [info@saskmilk.ca](mailto:info@saskmilk.ca)