

### COP Study is Critical!

#### In this Issue:

Notices.....	2
Quota Exchange.....	4
Production.....	7
SCC.....	8
Best Practices.....	10
Pasteurizer .....	11
Classifieds.....	12
Directors .....	12

For many years now, dairy farmers from across the country have participated in an annual Cost of Production study. The Canadian Dairy Commission is responsible for co-ordinating the study at the national level and relies on Wheatland Accounting to collect the data at the farm level within our province.

It is extremely important that this data continues to be collected, as the CDC uses this information as one of the considerations in setting the support prices for butter and skim milk powder.

Each year, the study requires that a certain number of farms leave the sample in order to add new producers. The selection of the new participants is done randomly in order to ensure that the sample is a reflection of the milk farms in our province.

Over the next few months, Bev Solie from SaskMilk will be contacting producers to ask them to participate in the Cost of Production study for Saskatchewan.

If you are contacted, please do agree to participate in this critical study. Participation does require extra work and effort but, in addition to the use of the data in setting support prices, participating in this study would provide you with useful information as well. The data collector will explain all aspects of this study in detail.

Consequently, do not hesitate to ask questions and gain a good understanding of the project, with all the advantages and obligations involved.

SaskMilk sincerely hopes that you will not hesitate to commit yourself for the upcoming year if you are asked. If you are not selected to participate this year, we hope that you will agree to participate in future years if chosen.

If you have any questions about the COP study, please contact the SaskMilk office and we will be happy to provide additional information.

## **SaskMilk Producer Ambassador Program**

*Do you believe in your industry? Want to share your enthusiasm with others? Then please consider talking to me about the SaskMilk Producer Ambassador Program!*

What is this, you might ask? This is an exciting program that we will be developing over the next year where we would like to help producers become spokespeople for the Saskatchewan dairy industry! Don't worry, we aren't going to just throw you 'in' unprepared! We will be taking the time to talk to you, get you whatever training you need to feel comfortable talking to the public, to the media, or to anyone else that needs some help understanding how great our industry is.

In the current environment, where supply management is being questioned, trade deals are coming down the road, and many consumers don't know or understand what producers do and how the system works, we need to be available and accessible as CHAMPIONS of our industry – and nobody is a better champion than you, the producer!

This will not require a big time commitment, honestly – we just want to give you the tools you need to be an ambassador, and build a network of producers that we can communicate with and call on if the need arises.

Please contact me at #306-721-9482 or [Joy.Smith@saskmilk.ca](mailto:Joy.Smith@saskmilk.ca) to get more information – no commitment, let's just chat and see if it might interest you! Thanks in advance everyone!

*-Joy Smith, SaskMilk Manager of Policy & Communications*

### **REMINDER: INCENTIVE DAYS**

**May:** 1 day

**June:** 1 day

**July:** 1 day

**August:** 2 days

**September:** 2 days

**October:** 1 day

**November:** 1 day

### **Save the Date!**

The Saskatchewan Dairy Conference  
will be held this year on  
**November 20<sup>th</sup> and 21<sup>st</sup>**  
at the Saskatoon Inn!





## 2014 SASKATCHEWAN PASTURE TOUR

Yorkton/Touchwood Hills area

August 7, 2014

### Get on Board!

The Saskatchewan Pasture Tour is your ticket to the latest information on forage varieties, pasture management systems and stewardship programming. So join us on August 7 for this producer focused tour!

### Tour Overview:

8:00am Registration in Yorkton  
 8:30am Get on board the bus!  
 8:30am Tour stops in Yorkton area  
 Noon Lunch on board the bus  
 12:30pm Tour stops in Kelliher and Ituna areas  
 3:30pm Tour DU Touchwood Hills Conservation Ranch  
 5:15pm BBQ at DU Touchwood Hills Conservation Ranch  
 8:00pm Bus returns to Yorkton

### Tour Highlights:

- New annual forage varieties
- Recipes for rejuvenation; nitrogen fertility, re-introducing legumes into existing stands, winter feeding & bale grazing
- Sod-seeding annual crops
- Grazing alfalfa
- Invasive weed management
- High stock density management
- Watering systems
- Riparian and wetland health

### Participating Organizations:



Agriculture and  
Agri-Food Canada

Agriculture et  
Agroalimentaire Canada



Government  
of  
Saskatchewan  
Ministry of Agriculture



Ducks Unlimited Canada  
Conserving Canada's Wetlands



Water Security  
Agency

## CANADIAN CATTLEMEN'S ASSOCIATION

# Town Hall

June 8, 2014, 6-10 p.m.

Moose Jaw Exhibition Convention Centre

Complementary Supper Included!

Cocktails - 5:30 to 6:00 p.m.

Beef producers, come and get a first-hand account of the many initiatives the Canadian Cattlemen's Association is involved in on your behalf.

Topics include: COOL, Foreign Trade (Korea, CETA), Industry updates, Beef Advocacy Canada, National Beef Strategic Plan, Species at Risk, Sustainable Beef, and hear from the CCA President!



CCA President Dave Solterson

Register online at

[www.cattle.ca/townhall](http://www.cattle.ca/townhall)  
or call 403-275-8558 ext. 314

Sponsored by



Brought to you by



CANADIAN  
CATTLEMEN'S  
ASSOCIATION

National Voice Of Cattle Producers

# QUOTA EXCHANGE

The market-clearing price established for the May 2014 Quota Exchange was **\$32,000.00**.

The next Quota Exchange will be held on **June 15, 2014**. All offers to sell and bids to purchase quota through the Quota Exchange must be received at the SaskMilk office by midnight, **June 6, 2014**. SaskMilk recommends that offers and bids be submitted well in advance of the deadline date to ensure adequate time for corrections, if necessary.

When making bids on the Quota Exchange, the price on offers to sell quota is the minimum price that the producer is prepared to accept for that quota. Only if the market-clearing price is equal to or greater than the producer's minimum price will that producer qualify for participation in the Exchange. Conversely, the price on offers to purchase quota is the maximum price that the producer is prepared to pay for that quota. Only if the market-clearing price is equal to or less than the producer's maximum price will that producer qualify for participation in the Exchange. The clearing price is set at the price where the smallest difference exists between the accumulated volume offered for sale and the accumulated volume bid to purchase.

The results of the Quota Exchange are outlined in the following Table.

## MAY 2014 QUOTA EXCHANGE RESULTS SUMMARY

<b>Market Clearing Price per kilogram of butterfat</b>	<b>\$ 32,000.00</b>
<b>Daily Kilograms offered to Purchase</b>	<b>30.00</b>
<b>Kilograms offered to Sell</b>	<b>52.81</b>
<b>Kilograms sold</b>	<b>3.00</b>
<b>Number of Producers</b>	
- offered to purchase	<b>2</b>
- purchased quota	<b>1</b>
- offered to sell	<b>7</b>
- sold quota	<b>1</b>

## MAY 2014 QUOTA EXCHANGE CLEARING PRICE RESULTS

Price (\$/daily kg b.f.)	No. of Sellers	Cumulative Sellers	Daily Kgs b.f. offered for sale	Cumulative sales	Cumulative Sales less Cumulative purchases	Cumulative purchases	Daily Kgs b.f. offered to purchase	Cumulative Buyers	No. of buyers
\$30,100.00	0	0	0.00	0.00	-30.00	30.00	25.00	2	1
<b>\$32,000.00</b>	<b>1</b>	<b>1</b>	<b>3.00</b>	<b>3.00</b>	<b>-2.00</b>	<b>5.00</b>	<b>5.00</b>	<b>1</b>	<b>1</b>
\$32,500.00	1	2	20.00	23.00	23.00	0.00	0.00	0	0
\$32,950.00	1	3	6.00	29.00	29.00	0.00	0.00	0	0
\$33,000.00	2	5	9.81	38.81	38.81	0.00	0.00	0	0
\$33,200.00	1	6	3.00	41.81	41.81	0.00	0.00	0	0
\$34,000.00	1	7	11.00	52.81	52.81	0.00	0.00	0	0

\* Please contact Bev Solie at 306-949-6999 for inquiries dealing with quota management sheets, the Quota Exchange, for transfer credits, or with any other quota transactions.

## TRANSFER CREDIT SUMMARY REPORT

MONTH	# OF PRODUCERS TRANSFER IN	# OF PRODUCERS TRANSFER OUT	TOTAL KGS BUTTERFAT
April	14	15	8,912
May	11	10	6,139
June	16	11	12,221
July	14	10	8,560
August	16	14	13,911
September	13	12	12,097
October	18	14	14,374
November	18	16	14,816
December	16	16	12,105
January, 2014	20	17	19,783
February	23	16	19,294
March	26	21	21,973
April	16	12	11,722

## PRIVATE TRANSFERS PROCESSED

MONTH	DAILY KILOGRAMS
May	20.00
June	17.00
July	0.00
Aug	111.00
Sept	22.00
Oct	0.00
Nov	10.00
Dec	110.26
Jan-2014	522.98
Feb	0.00
Mar	132.84
Apr	419.23

## OVER QUOTA (OVER 5 DAYS) REPORT BY MONTH

MONTH	# OF PRODUCERS	KGS BUTTERFAT
April	11	1,303
May	11	846
June	10	655
July	8	2,058
August	8	1,145
September	7	653
October	8	563
November	11	1,375
December	20	5,216
January, 2014	21	5,133
February	17	2,940
March	19	2,338
April	20	4,163



## SUMMARY REPORT OF CREDITS April, 2014 – 167 PRODUCERS

DAYS	# OF PRODUCERS	POSITIVE CREDITS ACCUMULATED (KGS OF BUTTERFAT)
+ 5	20	11,287
0 to + 5	40	15,954
TOTAL	60	27,241
DAYS	# OF PRODUCERS	NEGATIVE CREDITS ACCUMULATED (KGS OF BUTTERFAT)
-15	7	-4,153
-10 to -15	25	-41,094
-5 to -10	29	-26,730
0 to -5	46	-18,994
TOTAL	107	-90,971

## LOST OPPORTUNITY REPORT

MONTH	# OF PRODUCERS	LOST OPPORTUNITY (KGS OF BUTTERFAT)
April	13	3,960
May	14	6,967
June	11	6,596
July	13	9,398
August	14	7,625
September	19	6,589
October	16	6,941
November	11	1,979
December	10	2,487
January, 2014	8	1,723
February	8	542
March	3	240
April	7	1,104

## WEIGHTED AVERAGE COMPONENT TESTS & PRICES April, 2014

Components	Average Test	Price per kilogram Class 1 to 5
Butterfat	3.9172	12.006354
Protein	3.3337	9.006363
Other Solids	5.7096	1.314639

Based on the average component tests for the province, the average price received was **\$84.5615** per hectolitre. **The average butterfat price received per kilogram was \$21.47**

### SASKATCHEWAN MILK POOL RESULTS April 2014

Milk Sale Revenue	\$ 14,846,901.73
Western Milk Pool	\$ 1,517,417.33
Plant of Last Resort Service	\$ (56,928.25)
<b>Total Pool Value</b>	<b>\$ 16,307,390.81</b>

In April, Saskatchewan had a monthly CDC allocation of **765,873 kilograms** of butterfat. In the month of April, Saskatchewan production was **-6,293** of butterfat **under** and cumulatively **under** by **-64,773 kilograms** of butterfat. On a percentage basis, Saskatchewan is **-0.71%** within our CDC allocation flexibility limits based on the Continuous Quota model. The -1.50% lower flexibility limit is in effect.

	(1) Monthly Total Production  Kgs bf	(2) Total Monthly CDC Quota Allocation  Kgs bf	(3) Monthly Over or (Under) Production  Kgs bf  col. 1 – 2 = 3	(4) Lower Flexibility Limit (1.5%)  Kgs bf  col. 9 * -1.5%	(5) Upper Flexibility Limit 1.0%  Kgs bf  col. 9 *1.0%	(6) Cumulative Over or (Under) Production with limits  Kgs bf	(7) Cumulative Over or (Under) Production with limits in - %  col. 6 / 9	(8) Over Quota or (Lost Production Opportunity)  Kgs bf	(9) Rolling 12 Month Total Quota  Kgs bf
<b>Apr-13</b>	746,839	740,033	6,806	(134,442)	44,814	<b>(62,444)</b>	<b>-0.70%</b>	0	8,962,781
<b>May-13</b>	754,967	753,453	1,515	(134,427)	44,809	<b>(60,815)</b>	<b>-0.68%</b>	0	8,961,796
<b>Jun-13</b>	725,872	721,132	4,740	(134,402)	44,801	<b>(54,515)</b>	<b>-0.61%</b>	0	8,960,160
<b>Jul-13</b>	734,662	730,741	3,922	(134,525)	44,842	<b>(50,515)</b>	<b>-0.56%</b>	0	8,968,338
<b>Aug-13</b>	759,353	743,937	15,416	(134,654)	44,885	<b>(35,322)</b>	<b>-0.39%</b>	0	8,976,941
<b>Sep-13</b>	743,013	737,951	5,061	(134,773)	44,924	<b>(34,067)</b>	<b>-0.38%</b>	0	8,984,855
<b>Oct-13</b>	782,805	796,837	(14,032)	(135,081)	45,027	<b>(48,227)</b>	<b>-0.54%</b>	0	9,005,391
<b>Nov-13</b>	758,797	770,745	(11,948)	(135,189)	45,063	<b>(60,135)</b>	<b>-0.67%</b>	0	9,012,580
<b>Dec-13</b>	794,733	805,742	(11,009)	(135,518)	45,173	<b>(70,182)</b>	<b>-0.78%</b>	0	9,034,530
<b>Jan-14</b>	789,851	769,397	20,454	(135,547)	45,182	<b>(49,676)</b>	<b>-0.55%</b>	0	9,036,438
<b>Feb-14</b>	705,370	709,836	(4,466)	(135,940)	45,313	<b>(66,474)</b>	<b>-0.73%</b>	0	9,062,696
<b>Mar-14</b>	778,842	771,216	7,626	(135,992)	45,331	<b>(58,458)</b>	<b>-0.64%</b>	0	9,066,120
<b>Apr-14</b>	759,580	765,873	(6,293)	(136,382)	45,461	<b>(64,773)</b>	<b>-0.71%</b>	0	9,092,104

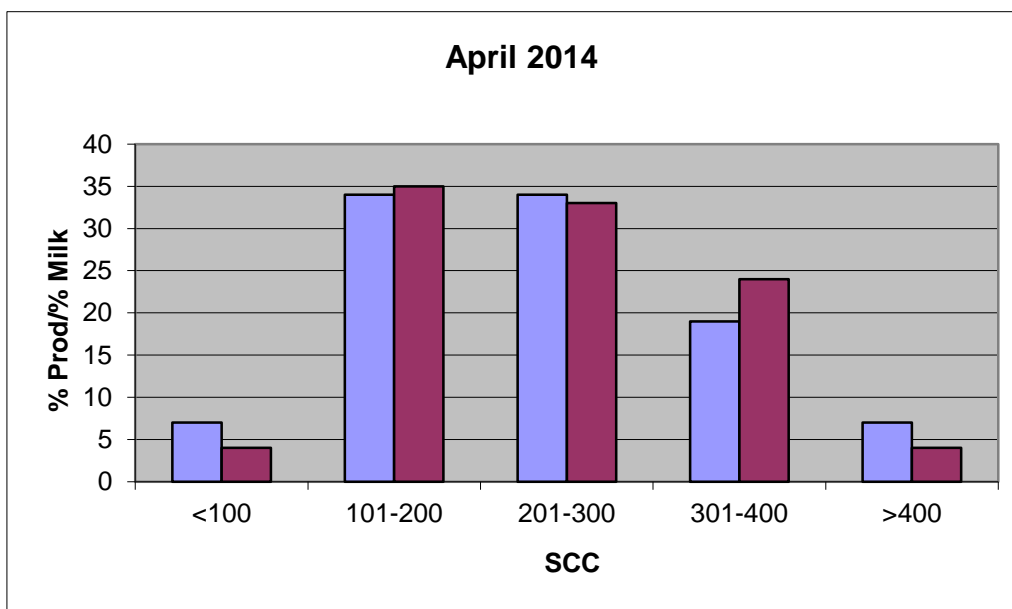
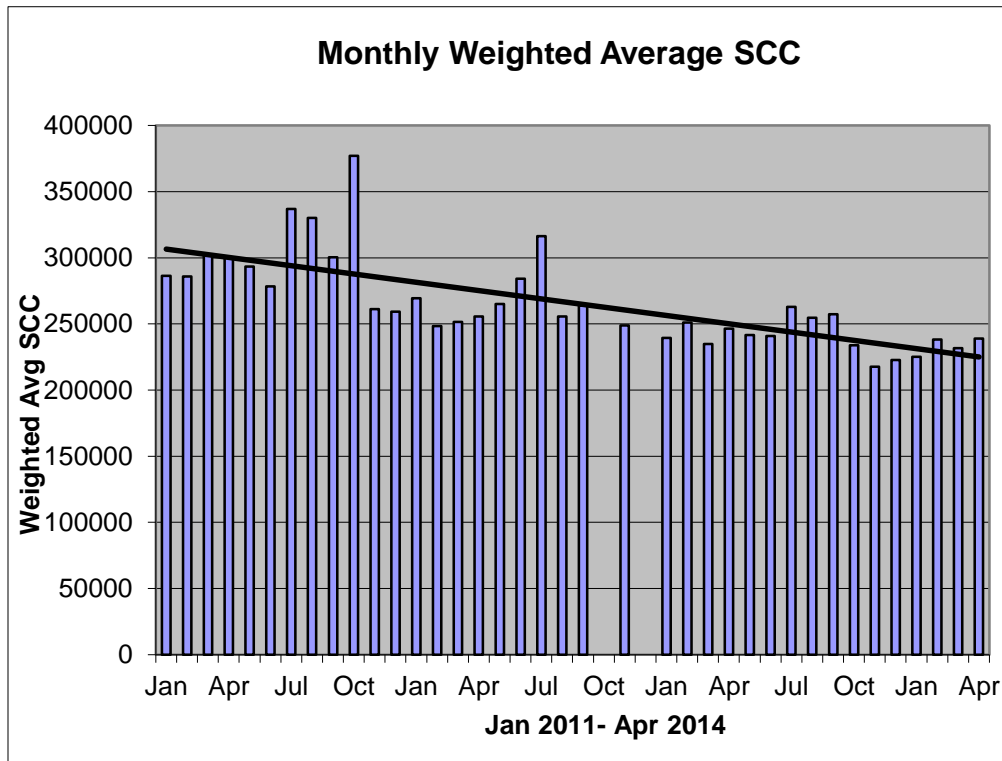
- (1) Monthly Production in Saskatchewan
- (2) Total Monthly Quota = Class 1 sales + Monthly MSQ + Carry Forward
- (3) Difference between the monthly production (1) and the total monthly quota (2)
- (4) The Lower Flexibility Limit is -1.5% of Rolling 12 Month Total Quota (9)
- (5) The Upper Flexibility Limit is 1.0% of Rolling 12 Month Total Quota (9)
- (6) Previous Month Cumulative Over or (Under) Production + Current Monthly Over or (Under) Production (capped at lower or upper limit if applicable)
- (7) Equal to Column (6) expressed as a percentage basis within the flexibility limits
- (8) Over Quota or (Lost production opportunity) outside of flexibility limits
- (9) Total Monthly CDC Quota Allocation for the previous 12 months

## SCC LIMIT NOW 400,000

Effective January 1, 2013, the SCC limit has changed to 400,000. Penalties and violations will be applied based on the new limit.

The following graphs provide producers with an overview of the Provincial Somatic Cell Count weighted average on a monthly basis as well as a breakdown of the % of producers in each SCC level for the month of April 2014.

If you have any questions or comments you can contact: Deb Haupstein at 306-721-9486.





## INHIBITOR TEST STATIONS

SaskMilk has established a number of inhibitor test stations around the province. Producers needing to check their bulk tanks for inhibitors can take a sample to the test station closest to their location.

Charm test strips are available to test for:

**Beta-Lactams-** the Charm 3 SL3 Beta Lactam test strip tests for amoxicillin, ampicillin, ceftiofur, cephalosporin, cloxacillin, and penicillin G

**Tetracyclines-** the Charm Tetracycline test strip tests for chlortetracycline, oxytetracycline and tetracycline.

**Sulfas-** the Charm Sulfa test strip tests for sulfacetamide, sulfachlorpyridazine, sulfadiazine, sulfadimethoxine, sulfadoxine, sulfaethoxypridazine, sulfamerazine, sulfamethazine, sulfamethizole, sulfamethoxazole, sulfamethoxypridazine, sulfapyridine, sulfaquinoxaline, sulfathiazole, and sulfisoxazole.

Test stations are located at the following locations:

1. Swift Current, SK - Agrifoods truck bay - 675 Cheadle Street West  
Office 306-773-1991 or Rodger Ruf 306-741-3261
2. Harris, SK - Cairns Farm – Wes Cairns 306-665-4807
3. Star City, SK - Star City Colony - Reuben Tschetter 306-921-9381
4. Grenfell, SK - Jim Ross 306-697-2232
5. Yorkton, SK - Ford Dairy Farms Inc. - Bud and Margaret Ford 306-782-7240
6. Saskatoon, SK – Agrifoods Truck Bay - east of the Saputo plant receiving bay  
lead hand - Jim or Clint 306-664-0202 after hours: 306-668-8135

Charm tests strips and Charm testers are now available for purchase through SaskMilk. Agrifoods is now carrying SNAP test kits for tetracyclines as well as beta lactams.

For further information you can contact: Deb Haupstein 306-721-9486



### If You Can't Ship It - Test It!

**BSE surveillance is still important and every animal tested makes a difference.**

**Support your cattle industry by having your 4-D (dead, diseased, dying or downer) cattle tested for BSE.**

**For more information, call the Canadian Food Inspection Agency at 1-877-727-5273.**

# Code of Practice

## 1.4 Stall Design

Stall design is a very important factor in cow comfort that translates to more and better quality milk, healthier cows and fewer animal welfare concerns. Cows spend more than half of their time lying down, and get up and down frequently. Uncomfortable stalls result in less frequent or shorter duration resting periods. Injuries are associated with standing on concrete surfaces. Cows forced to stand for prolonged periods because of uncomfortable or too few stalls have reduced dry matter intake (DMI) and, as a result, lower milk production.

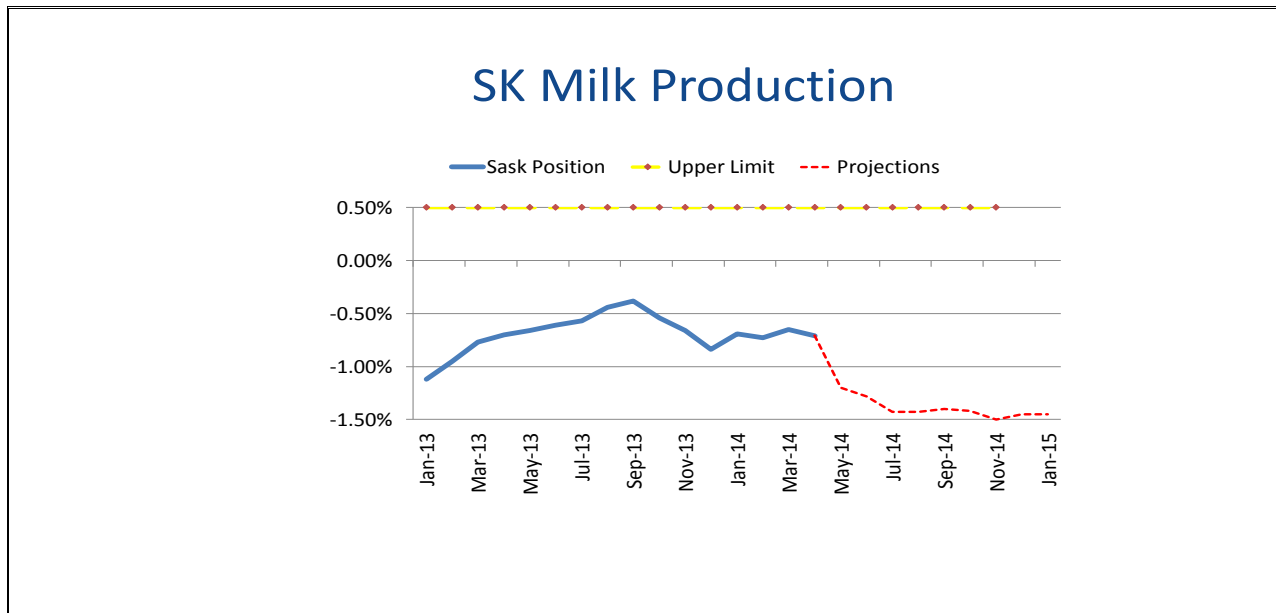
The dimensions and design of free stalls will differ depending on type of barn, configuration of the barn and where the stall is located (see Appendix C - Flowchart for Evaluating Free Stalls). A growing body of research has now demonstrated that the surface we provide for cows is one of the most important factors in designing a suitable lying area (11).

### **REQUIREMENTS**

***Build stalls to minimize hock and knee injuries and to allow cows to rise and lie down with ease.***

### **RECOMMENDED BEST PRACTICES**

- build stalls that provide adequate room for cows to lay comfortably for at least 12 hours per day
- ensure stalls are designed to minimize hock and knee injuries and allow cows to rise and lie down with ease (e.g., width and length, lunge space, brisket board location, neck rail height and location, length of chain). Refer to Appendix C - Flowchart for Evaluating Free Stalls and Appendix D - Flowchart for Evaluating Tie Stalls
- provide a comfortable resting surface in stalls (e.g., sand, deep bedding, mattresses with bedding) (11)
- ensure stalls are clean and dry.



# Saskatchewan Dairy Pasteurizer Program

## Growing Forward 2

Growing Forward 2 (GF2) is a federal-provincial-territorial policy framework of agricultural programs.

As a part of this biosecurity awareness and education of best practices in the industry the **Saskatchewan Dairy Pasteurizer Program** has been developed.

### SASKATCHEWAN DAIRY PASTEURIZER PROGRAM

This program will reimburse producers for 50% of the cost of purchasing a pasteurizer to a maximum of \$5,000 per producer.

To be eligible for program funding, producers must have:

- Purchased a colostrum pasteurizer between December 1, 2013 and November 30, 2014;
- Submitted a copy of the paid receipt to SaskMilk along with their signed application form.

There is still funding available for this program.

For further information please contact: Deb Hauptstein 306-721-9486



## QUOTA LISTING or CLASSIFIED AD SERVICE

SaskMilk offers a free quota listing service as part of its Newsletter. Anyone wishing to sell or purchase quota and/or cows or miscellaneous dairy equipment is welcome to contact the SaskMilk office at (306) 949-6999. All prices and negotiations will be independent of SaskMilk. **Please note that ads will be posted in two issues and will then be removed unless SaskMilk is notified otherwise.**

### Classifieds

- For sale: DeLaval Bulk Tank Model #ET1500 plus cooling units #306-693-3046 ext. 603
- Looking for a used DeLaval FloMaster pro milk meter.  
\*preferably only the load cells  
Contact: Jonathan Hofer, Simmie Colony #306-774-9821
- For Sale: 100 kgs of Sask dairy quota; cows also available  
Contact [rodyork@sasktel.net](mailto:rodyork@sasktel.net)  
#306-873-7428
- Cows and quota for sale, with options. Contact Alvin and Donna Bohn #306-697-3192
- We here at Hodgeville Colony have for sale used milking parts:  
1000 gal DeLaval Milk tank  
10hp Vacuum Pump and Motor  
Omni auto take offs  
Pulsators and controls  
Milking claws  
Call #306-741-0612

## SASKMILK BOARD OF DIRECTORS

Melvin Foth – Chair  
(306) 225-4678  
[fvl@sasktel.net](mailto:fvl@sasktel.net)

David Entz – Vice Chair  
(306) 626-3300  
[davidentz3662@gmail.com](mailto:davidentz3662@gmail.com)

Jack Ford  
(306) 328-4700  
[jackford@sasktel.net](mailto:jackford@sasktel.net)

Brad Kornelius  
(306) 239-4200  
[bradkornelius@gmail.com](mailto:bradkornelius@gmail.com)

Isaac Klassen  
(306) 249-4435  
[isaac00@sasktel.net](mailto:isaac00@sasktel.net)

Jim Ross  
(306) 697-2232  
[jimleeholsteins@sasktel.net](mailto:jimleeholsteins@sasktel.net)

Sheldon Peifer  
(306) 862-9470  
[dspeifer@sasktel.net](mailto:dspeifer@sasktel.net)

Brian Lindenbach  
(306) 771-2721  
[blindenbach@imagewireless.ca](mailto:blindenbach@imagewireless.ca)

Ryan Enns  
(306) 220-7993  
[corandryan@gmail.com](mailto:corandryan@gmail.com)

For further information, please contact the SaskMilk office.  
444 McLeod Street  
Regina, Saskatchewan S4N 4Y1  
Telephone: (306) 949-6999  
Fax: (306) 949-2605  
Website: [www.saskmilk.ca](http://www.saskmilk.ca)  
Email: [info@saskmilk.ca](mailto:info@saskmilk.ca)