

Chairman's Message *by Blaine McLeod*

In this Issue:

| | |
|-----------------------|----|
| Notices..... | 2 |
| Quota Exchange..... | 3 |
| Production..... | 4 |
| SCC Reports | 8 |
| Notices..... | 9 |
| Code of Practice..... | 11 |
| Classified | 13 |
| Directors | 13 |

I would like to take the opportunity to wish everyone a safe and successful summer season as we seek to put up the best feed that we can. It seems to me that with the late spring the growing season has been significantly compressed and there never seems to be enough hours in the day to accomplish the required work or get enough sleep! I trust you will all be able to find the right balance between work and family life.

For many years our farm has engaged with local schools in providing farm tours. It has always been a very rewarding experience as the children, and the adults who accompany them, have gained an understanding of where milk comes from and the effort we expend to provide a safe and wholesome product. One thing I have noticed is that the number of children who have an agricultural background is dwindling rapidly. They have very little understanding of what we do and are certainly easily influenced by the media. As each of us know, not all of the information about agriculture is positive in its portrayal and the negative images that are displayed have lasting impacts. We have a huge challenge to positively influence and educate our present and future consumers.

We are encouraged about the opportunities that will soon exist at the new University of Saskatchewan Rayner Dairy Research and Teaching facility. With its gallery viewing area

we will be able to provide a positive learning environment for many visitors and not only showcase dairy but all of agriculture. We trust that the positive image that will be displayed will have a lasting impact and that there will be students who will consider a career in agriculture and its related fields.

I am also reminded that it is not enough for us to leave the public exposure of our dairy industry to the university barn. We must all be committed to continuing to use Best Practices on each of our farms, and to be vigilant about our standards. This is the thought that is driving the initiatives of pro-action that DFC will be bringing forward at their AGM on July 23 & 24. The proposed initiative combines six elements that are under development. They include the following: Milk Quality, Food Safety (CQM), Traceability, Animal Welfare, Bio-security, Environment, and Sustainability. While the concept being brought forward is a good initiative, each of the member organizations need to consider if it is the only option or the best option. We recognize that these elements will be part of what we do on our farms but we will be looking for much more detail before we commit our province to this initiative. In the future I will continue to write about this initiative but in the meantime please ensure that what happens on your farms presents a positive image for dairy farming in Canada.

NOTICE

The Saskatchewan Ministry of Agriculture would like to characterize liquid dairy manure properties including nitrogen, phosphorous, moisture content, and production volume. The Ministry is seeking producers interested in participating in a two-year project.

Participants will be asked to contact the Ministry prior to manure removal for a period of two years. Ministry staff will be on-site during all manure removal events to collect samples and to determine the volume of manure being removed. Producers will be provided with lab analyses of their manure.

Interested dairy producers can volunteer by contacting Darren Stovin, Agricultural Operations at 306-787-6591.

‘Tis the Season....

To talk to your MLA and MP!

That’s right – it’s Summer and the MLAs and MPs are spending time in their home ridings, participating in events, and meeting with constituents. This is the perfect opportunity for producers to be Ambassadors to the industry by ensuring that your MPs and MLAs hear from you about the importance of the dairy industry to Canada!

(If you would like some key messages, speaking points, or statistics to have at your fingertips, just contact Joy Smith, SaskMilk’s Manager of Policy and Communications at joy.smith@saskmilk.ca or #306-721-9482 and she will be happy to help you)

REMINDER: FALL INCENTIVE DAYS

August: 2 days

September: 2 days

October: 1 day

November: 1 day

QUOTA EXCHANGE

The market-clearing price established for the July 2013 Quota Exchange was **\$31,500.00**.

The next Quota Exchange will be held on **August 15, 2013**. All offers to sell and bids to purchase quota through the Quota Exchange must be received at the SaskMilk office by midnight, **August 6, 2013**.

SaskMilk recommends that offers and bids be submitted well in advance of the deadline date to ensure adequate time for corrections, if necessary.

When making bids on the Quota Exchange, the price on offers to sell quota is the minimum price that the producer is prepared to accept for that quota. Only if the market-clearing price is equal to or greater than the producer's minimum price will that producer qualify for participation in the Exchange. Conversely, the price on offers to purchase quota is the maximum price that the producer is prepared to pay for that quota. Only if the market-clearing price is equal to or less than the producer's maximum price will that producer qualify for participation in the Exchange. The clearing price is set at the price where the smallest difference exists between the accumulated volume offered for sale and the accumulated volume bid to purchase.

The results of the Quota Exchange are outlined in the following Table.

JULY 2013 QUOTA EXCHANGE RESULTS SUMMARY

| | |
|--|---------------------|
| Market Clearing Price per kilogram of butterfat | \$ 31,500.00 |
| Daily Kilograms offered to Purchase | 18.00 |
| Kilograms offered to Sell | 20.76 |
| Kilograms sold | 9.00 |
| Number of Producers | |
| - offered to purchase | 2 |
| - purchased quota | 1 |
| - offered to sell | 3 |
| - sold quota | 3 |

JULY 2013 QUOTA EXCHANGE CLEARING PRICE RESULTS

| Price (\$/daily kg b.f.) | No. of Sellers | Cumulative Sellers | Daily Kgs b.f. offered for sale | Cumulative sales | Cumulative Sales less Cumulative purchases | Cumulative purchases | Daily Kgs b.f. offered to purchase | Cumulative Buyers | No. of buyers |
|--------------------------|----------------|--------------------|---------------------------------|------------------|--|----------------------|------------------------------------|-------------------|---------------|
| \$28,345.50 | 1 | 1 | 1.76 | 1.76 | -16.24 | 18.00 | 0.00 | 2 | 0 |
| \$30,500.00 | 1 | 2 | 4.00 | 5.76 | -12.24 | 18.00 | 0.00 | 2 | 0 |
| \$31,000.00 | 0 | 2 | 0.00 | 5.76 | -12.24 | 18.00 | 9.00 | 2 | 1 |
| \$31,500.00 | 1 | 3 | 15.00 | 20.76 | 11.76 | 9.00 | 9.00 | 1 | 1 |

*** Please contact Bev Solie at 306-949-6999 for inquiries dealing with quota management sheets, the Quota Exchange, for transfer credits, or with any other quota transactions.**

TRANSFER CREDIT SUMMARY REPORT

| MONTH | # OF PRODUCERS TRANSFER IN | # OF PRODUCERS TRANSFER OUT | TOTAL KGS BUTTERFAT |
|---------------|-------------------------------|--------------------------------|------------------------|
| June | 11 | 12 | 9,467 |
| July | 7 | 7 | 6,610 |
| August | 8 | 9 | 7,748 |
| September | 17 | 15 | 16,499 |
| October | 22 | 16 | 17,681 |
| November | 25 | 22 | 21,887 |
| December | 27 | 23 | 29,882 |
| January, 2013 | 14 | 17 | 13,158 |
| February | 16 | 15 | 10,369 |
| March | 19 | 18 | 14,543 |
| April | 14 | 15 | 8,912 |
| May | 11 | 10 | 6,139 |
| June | 16 | 11 | 12,221 |

PRIVATE TRANSFERS PROCESSED

| MONTH | DAILY KILOGRAMS |
|----------|-----------------|
| Jul | 106.06 |
| Aug | 211.70 |
| Sept | 54.93 |
| Oct | 30.20 |
| Nov | 0.00 |
| Dec | 25.24 |
| Jan-2013 | 41.98 |
| Feb | 0.00 |
| Mar | 81.66 |
| Apr | 59.62 |
| May | 20.00 |
| June | 17.00 |

OVER QUOTA (OVER 5 DAYS) REPORT BY MONTH

| MONTH | # OF PRODUCERS | KGS BUTTERFAT |
|---------------|----------------|---------------|
| June | 9 | 1,120 |
| July | 5 | 441 |
| August | 4 | 403 |
| September | 7 | 367 |
| October | 8 | 1,035 |
| November | 13 | 2,403 |
| December | 15 | 2,847 |
| January, 2013 | 19 | 4,848 |
| February | 17 | 3,436 |
| March | 21 | 4,621 |
| April | 11 | 1,303 |
| May | 11 | 846 |
| June | 10 | 655 |

SUMMARY REPORT OF CREDITS June, 2013 – 166 PRODUCERS

| DAYS | # OF PRODUCERS | POSITIVE CREDITS ACCUMULATED (KGS OF BUTTERFAT) |
|------------|----------------|---|
| + 5 | 10 | 4,804 |
| 0 to + 5 | 48 | 16,519 |
| TOTAL | 58 | 21,323 |
| DAYS | # OF PRODUCERS | NEGATIVE CREDITS ACCUMULATED (KGS OF BUTTERFAT) |
| -15 | 11 | -22,612 |
| -10 to -15 | 14 | -18,560 |
| -5 to -10 | 31 | -38,658 |
| 0 to -5 | 52 | -16,123 |
| TOTAL | 108 | -95,953 |

LOST OPPORTUNITY REPORT

| MONTH | # OF PRODUCERS | LOST OPPORTUNITY (KGS OF BUTTERFAT) |
|---------------|----------------|--|
| June | 11 | 6,523 |
| July | 16 | 9,952 |
| August | 22 | 13,704 |
| September | 24 | 15,137 |
| October | 20 | 12,061 |
| November | 13 | 7,449 |
| December | 13 | 6,389 |
| January, 2013 | 10 | 4,550 |
| February | 11 | 4,520 |
| March | 10 | 3,572 |
| April | 13 | 3,960 |
| May | 14 | 6,967 |
| June | 11 | 6,596 |

WEIGHTED AVERAGE COMPONENT TESTS & PRICES June, 2013

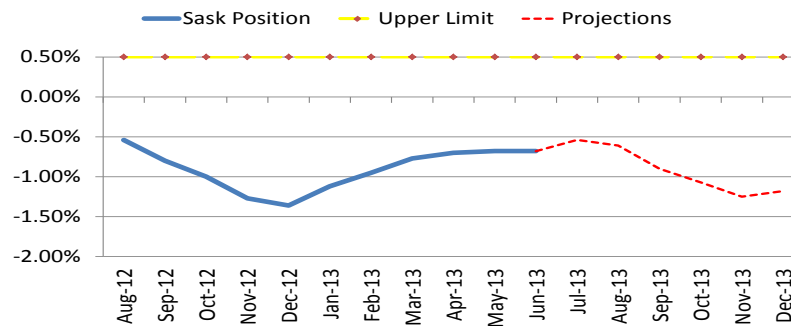
| Components | Average Test | Price per kilogram Class 1 to 5 |
|--------------|--------------|------------------------------------|
| Butterfat | 3.8102 | 11.661540 |
| Protein | 3.2574 | 8.661545 |
| Other Solids | 5.7160 | 1.234008 |

Based on the average component tests for the province, the average price received was **\$79.7012** per hectolitre. **The average butterfat price received per kilogram was \$20.90**

SASKATCHEWAN MILK POOL RESULTS June 2013

| | |
|------------------------------|-------------------------|
| Milk Sale Revenue | \$ 14,216,909.94 |
| Western Milk Pool | \$ 1,009,277.98 |
| Plant of Last Resort Service | \$ (56,355.31) |
| Total Pool Value | \$ 15,169,832.61 |

SK Milk Production



Western Canadian Classic CREAMERS

Western Canada's premier junior dairy show is offering for sale these udderly irresistible creamers!

The creamers cost \$30, with \$20 going towards an orphanage in Kenya and \$10 going towards WCC.

Support two great causes and order yours today!

Contact B.J. Crosbie at 306-756-2784 or Ria Vanzessen at 306-254-4342 or tymen.ria@sasktel.net

Saskatchewan is hosting WCC this year in Moose Jaw from August 27th - September 1st!
The theme this year is "COWNADIAN FOOTBALL"

It is such a great event which was initiated to provide an opportunity for dairy youth to compete and develop skills that will serve them not only in their future agribusiness careers, but within any field of work they may pursue. The youth will gain skills in leadership, teamwork, public speaking, agriculture/dairy science, dairy fitting, dairy judging, showmanship and citizenship. **Plan to attend and cheer on team Saskatchewan!**

In June, Saskatchewan had a monthly CDC allocation of **721,132 kilograms** of butterfat. In the month of June, Saskatchewan production was **4,740** of butterfat **over** and cumulatively **under** by **-54,515 kilograms** of butterfat. On a percentage basis, Saskatchewan is **-0.61%** within our CDC allocation flexibility limits based on the Continuous Quota model. The -1.50% lower flexibility limit is in effect.

| | (1) Monthly Total Production Kgs bf | (2) Total Monthly CDC Quota Allocation Kgs bf | (3) Monthly Over or (Under) Production Kgs bf col. 1 – 2 = 3 | (4) Lower Flexibility Limit (1.5%) Kgs bf col. 9 * -1.5% | (5) Upper Flexibility Limit 1.0% Kgs bf col. 9 * 1.0% | (6) Cumulative Over or (Under) Production with limits Kgs bf | (7) Cumulative Over or (Under) Production with limits in - % col. 6 / 9 | (8) Over Quota or (Lost Production Opportunity) Kgs bf | (9) Rolling 12 Month Total Quota Kgs bf |
|----------------|---|--|--|--|---|--|--|---|--|
| June-12 | 737,921 | 723,028 | 14,893 | (135,565) | 45,188 | (35,917) | -0.40% | 0 | 9,037,685 |
| July-12 | 723,166 | 721,246 | 1,920 | (135,331) | 45,110 | (33,997) | -0.38% | 0 | 9,022,051 |
| Aug-12 | 721,786 | 735,300 | (13,514) | (135,181) | 45,060 | (47,511) | -0.53% | 0 | 9,012,093 |
| Sept-12 | 710,635 | 733,804 | (23,169) | (135,045) | 45,015 | (72,158) | -0.80% | 0 | 9,002,999 |
| Oct-12 | 756,961 | 776,372 | (19,411) | (135,079) | 45,026 | (91,611) | -1.02% | 0 | 9,005,253 |
| Nov-12 | 739,624 | 763,489 | (23,866) | (135,022) | 45,007 | (115,477) | -1.28% | 0 | 9,001,456 |
| Dec-12 | 775,085 | 787,512 | (12,427) | (134,977) | 44,992 | (126,691) | -1.41% | 0 | 8,998,476 |
| Jan-13 | 788,550 | 767,300 | 21,251 | (134,846) | 44,949 | (100,685) | -1.12% | 0 | 8,989,708 |
| Feb-13 | 712,149 | 695,378 | 16,771 | (134,400) | 44,800 | (84,357) | -0.94% | 0 | 8,960,033 |
| Mar-13 | 782,825 | 767,146 | 15,680 | (134,368) | 44,789 | (69,000) | -0.77% | 0 | 8,957,872 |
| Apr-13 | 746,839 | 740,033 | 6,806 | (134,442) | 44,814 | (62,444) | -0.70% | 0 | 8,962,781 |
| May-13 | 754,967 | 753,453 | 1,515 | (134,427) | 44,809 | (60,815) | -0.68% | 0 | 8,961,796 |
| Jun-13 | 725,872 | 721,132 | 4,740 | (134,402) | 44,801 | (54,515) | -0.61% | 0 | 8,960,160 |

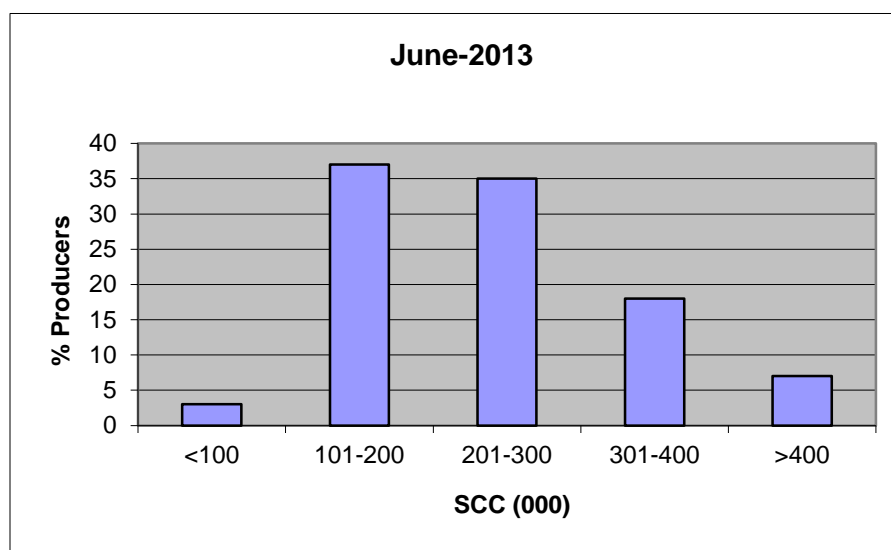
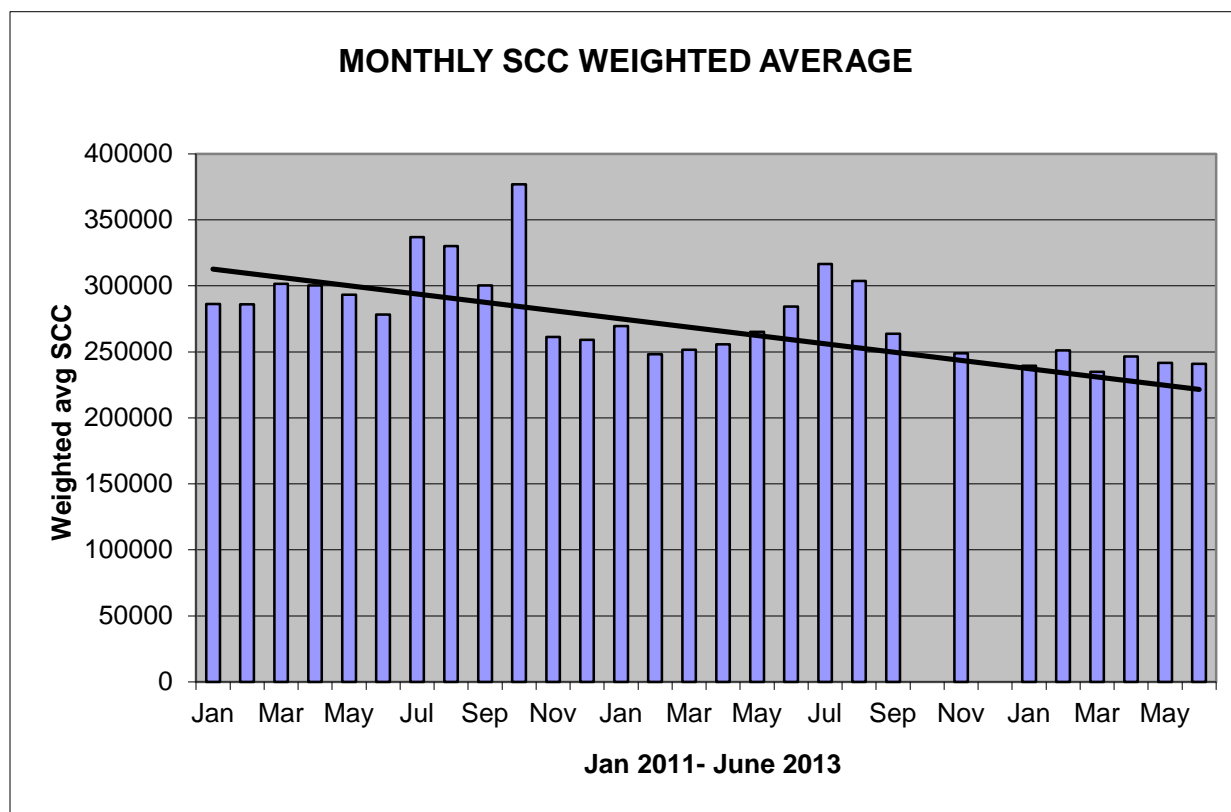
- (1) Monthly Production in Saskatchewan
- (2) Total Monthly Quota = Class 1 sales + Monthly MSQ + Carry Forward
- (3) Difference between the monthly production (1) and the total monthly quota (2)
- (4) The Lower Flexibility Limit is -1.5% of Rolling 12 Month Total Quota (9)
- (5) The Upper Flexibility Limit is 1.0% of Rolling 12 Month Total Quota (9)
- (6) Previous Month Cumulative Over or (Under) Production + Current Monthly Over or (Under) Production (capped at lower or upper limit if applicable)
- (7) Equal to Column (6) expressed as a percentage basis within the flexibility limits
- (8) Over Quota or (Lost production opportunity) outside of flexibility limits
- (9) Total Monthly CDC Quota Allocation for the previous 12 months

SCC LIMIT NOW 400,000

Effective January 1, 2013, the SCC limit has changed to 400,000. Penalties and violations will be applied based on the new limit.

The following graphs provide producers with an overview of the Provincial Somatic Cell Count weighted average on a monthly basis as well as a breakdown of the % of producers in each SCC level for the month of June 2013.

If you have any questions or comments you can contact: Deb Hauptstein at 306-721-9486.



Government of Saskatchewan Notice: Saskatchewan Anthrax Response Plan

As of April 1, 2013, the Canadian Food Inspection Agency (CFIA) stopped responding to cases of anthrax. The Saskatchewan Ministry of Agriculture has established a provincial anthrax response strategy to assist affected producers so that animal and public health are protected.

Anthrax remains a federally reportable disease; therefore, laboratories and veterinarians will continue to report all anthrax cases to the CFIA. In addition, laboratories and veterinarians must notify the office of the provincial Chief Veterinary Officer of anthrax cases within 24 hours.

The Ministry of Agriculture will pay for Anthrax testing done at Prairie Diagnostic Services in Saskatoon. The Ministry will provide carcass-side test kits to veterinary clinics serving high-risk areas of the province.

When anthrax has been confirmed on a farm, a Ministry of Agriculture inspector will quarantine the affected pasture and exposed (or potentially exposed) animals to prevent the spread of anthrax through the movement of animals. This quarantine will begin on the day of first anthrax death and will end 7 days after the last anthrax death, as long as affected carcasses have been properly disposed of. This is necessary to protect animal and public health. An inspector, or designated representative, will visit the farm to determine the source of the anthrax, and to trace animal movement on and off the farm for the previous 7 days. Information will be provided on how to dispose of the carcass and how to clean and disinfect (C&D) contaminated areas. A follow-up visit will be arranged to confirm that carcass disposal and C&D has been satisfactorily completed.

The above activities will be carried out by Ministry of Agriculture inspectors or their designated representatives. In many cases, veterinarians will be asked to act as designated representatives on behalf of the Ministry to provide information on anthrax prevention and management, carcass disposal and C&D directions and confirmation that these activities have been completed. When private veterinarians are acting under the direction of the Ministry for the purposes of anthrax response, the fees for their services will be paid by the Ministry.

Costs related to carcass disposal, C&D and any other management procedure to control anthrax, such as vaccination or treatment, are the responsibility of the producer.

Vaccination effectively prevents anthrax. It is strongly recommended that animals be vaccinated against anthrax, especially in areas where anthrax has previously occurred.

If you have any questions, please contact the provincial Chief Veterinary Officer at 306-787-5547.

INHIBITOR TEST STATIONS

SaskMilk has established a number of inhibitor test stations around the province. Producers needing to check their bulk tanks for inhibitors can take a sample to the test station closest to their location.

Charm test strips are available to test for:

Beta-Lactams- the Charm 3 SL3 Beta Lactam test strip tests for amoxicillin, ampicillin, ceftiofur, cephapirin, cloxacillin, and penicillin G

Tetracyclines- the Charm Tetracycline test strip tests for chlortetracycline, oxytetracycline and tetracycline.

Sulfas- the Charm Sulfa test strip tests for sulfacetamide, sulfachlorpyridazine, sulfadiazine, sulfadimethoxine, sulfadoxine, sulfaethoxypyridazine, sulfamerazine, sulfamethazine, sulfamethizole, sulfamethoxazole, sulfamethoxypyridazine, sulfapyridine, sulfaquinoxaline, sulfathiazole, and sulfisoxazole.

Test stations are located at the following locations:

1. Swift Current, SK - Agrifoods truck bay - 675 Cheadle Street West
Office 306-773-1991 or Rodger Ruf 306-741-3261
2. Harris, SK - Cairns Farm – Wes Cairns 306-665-4807
3. Star City, SK - Star City Colony - Reuben Tschetter 306-921-9381
4. Grenfell, SK - Jim Ross 306-697-2232
5. Yorkton, SK - Ford Dairy Farms Inc. - Bud and Margaret Ford 306-782-7240
6. Saskatoon, SK – Agrifoods Truck Bay - east of the Saputo plant receiving bay
lead hand - Jim or Clint 306-664-0202 after hours: 306-668-8135

Charm tests strips and Charm testers are now available for purchase through SaskMilk. Agrifoods is now carrying SNAP test kits for tetracyclines as well as beta lactams.

For further information you can contact: Deb Hauptstein 306-721-9486

Did you know...?

The Canadian dairy industry contributes annually more than \$3B in local, provincial and federal taxes!

Between 6-8% of Canada's dairy consumption is supplied by imported products coming in tariff-free, which makes Canada more generous than the U.S. and EU!

Code of Practice

Body Condition Scoring

Body condition scoring (BCS) is a tool for determining if an animal is too thin, too fat or in ideal condition. Ideal BCS is a range and will vary depending upon stage of lactation. Appendix E - Body Condition Scoring Chart, provides information to assess BCS. Evaluators can assign quarter or half scores for animals that fall between two BCS units. For the purposes of this Code, all Body Condition Scores refer to the scale shown in Appendix E.

Cows should be at an ideal BCS at dry off and should be fed to maintain this condition until calving. Post calving (calving to 120 days) cows can be expected to lose 0.5 to 1 unit of BCS. Cows should not lose more than 1 BCS at any time. BCS should remain constant or begin to increase during mid-lactation. During late lactation cows should gain back the BCS lost during the post-calving period).

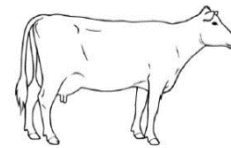
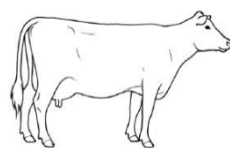
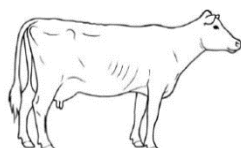
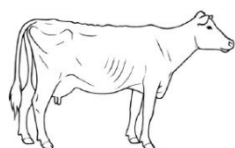
Cows that are too fat at calving ($BCS > 4$) are more prone to reproductive and metabolic diseases (e.g., difficult calving, retained placenta, cystic ovaries, uterine infections, ketosis, displaced abomasum, milk fever). Cows that are too thin at calving ($BCS < 3.25$) may not have sufficient body reserves to support high levels of milk production. Cows that lose more than 1 BCS experience reduced fertility, particularly if the loss is too rapid.

REQUIREMENTS

Producers must take corrective action for animals at a BCS of 2 or lower.

RECOMMENDED BEST PRACTICES

- a. use Appendix E - Body Condition Scoring Chart to regularly assess the BCS's of cows;
- b. aim for the following ideal BCS ranges:
 - dry off, 3.25 to 3.75
 - calving, 3.25 to 3.75
 - early lactation, 2.50 to 3.25
 - mid-lactation, 2.75 to 3.25
 - late lactation, 3.00 to 3.50
 - growing heifers, 2.75 to 3.25
 - heifers at calving, 3.25 to 3.75
- c. employ corrective measures if more than 15% of the herd is above or below ideal BCS for their stage of lactation;
- d. keep records - identify animals that are too thin or too fat, ascertain the cause, and fix.





If You Can't Ship It - Test It!

BSE surveillance is still important and every animal tested makes a difference.

Support your cattle industry by having your 4-D (dead, diseased, dying or downer) cattle tested for BSE.

For more information, call the Canadian Food Inspection Agency at 1-877-727-5273.



**September 18th
and 19th, 2013**

**at Morsan Farms,
Ponoka, Alberta**

**300 head are selling
including 20 breeding age
bulls for herd service
from these families:
Missy, Chaya, Chassity,
Fools Gold, Brasilia,
Cash, Ariel, Aubrey and more.
Complimentary lunch will
be provided at the sale.**

**Don't miss
this rare opportunity!**

Managed by

Morris & Sandra Thalen and Family
Box 5, Site 15, RR1, Ponoka (Alberta) Canada T4J 1R1
Phone: 403 783-8712 · Cell: 403 783-1333



www.morsan.com

Genetics Manager: Greg Thalen
Cell: 403 783-9870 · Office: 403 783-8784
Fax: 403 783-8733 · info@morsan.com

QUOTA LISTING or CLASSIFIED AD SERVICE

SaskMilk offers a free quota listing service as part of its Newsletter. Anyone wishing to sell or purchase quota and/or cows or miscellaneous dairy equipment is welcome to contact the SaskMilk office at (306) 949-6999. All prices and negotiations will be independent of SaskMilk.

Please note that ads will be posted in two issues and will then be removed unless SaskMilk is notified otherwise.

Classifieds

- **Selling: Registered Heifers, bred and unbred.** Contact: Sheldon Peifer (306) 862-7140

SEE the *Saskatchewan Beef, Feed and Forage Industry Research Strategy*, now online at www.saskmilk.ca

SASKMILK BOARD OF DIRECTORS

Blaine McLeod – Chair
(306) 756-2775

rb.mcleod@sasktel.net

Melvin Foth – Vice Chair
(306) 225-4678

fvl@sasktel.net

David Entz
(306) 626-3300
davidentz3662@gmail.com

Jack Ford
(306) 328-4700
jackford@sasktel.net

Brad Kornelius
(306) 239-4200
brad.crystal@yourlink.ca

Isaac Klassen
(306) 249-4435
isaac00@sasktel.net

Jim Ross
(306) 697-2232
jimleeholsteins@sasktel.net

Juliann Lindenbach
(306) 771-2776
robella@sasktel.net

Sheldon Peifer
(306) 862-9470
dspeifer@sasktel.net

For further information, please contact the SaskMilk office.
444 McLeod Street
Regina, Saskatchewan S4N 4Y1
Telephone: (306) 949-6999
Fax: (306) 949-2605
Website: www.saskmilk.ca
Email: info@saskmilk.ca