

Chairman's Message *by Blaine McLeod*

In this Issue:

Research Report.....	2
Photos	3
Quota Exchange.....	5
Production.....	9
SCC Reports	10
WCC program.....	11
Best Practices.....	13
Classifieds.....	16
Directors	16

Last month I promised to continue writing about the proposed initiatives by DFC that fall under proAction (Milk Quality, Food Safety (CQM), Traceability, Animal Care, Biosecurity, and Environment), and mentioned that these would be brought forward at DFC's AGM in July.

I am pleased to report that at the AGM there was an excellent turnout and a significant amount of genuine interaction and discussion regarding the proposed elements and the plans to implement proAction. SaskMilk was first to the microphone to assure our partners that we were committed to being engaged in the process of developing and implementing these programs, but had outstanding concerns yet to be addressed, including the all-inclusive nature of the proposed approval Motion.

After a great deal of questions and answers between various provinces' representatives and DFC, and discussion that clarified issues that a few provinces had raised, we were pleased that DFC directly engaged Saskatchewan to address our concerns. The result of all of this engagement was a revised Motion that approved the concept of proAction, its Vision,

Principles, and Timeline, and that **all elements of proAction and their implementation plans will be brought back to the DFC Council for approval.** This addresses a fundamental concern that we had, ensuring that each step in the process would allow for meaningful engagement of all provinces. The challenge and opportunity for us now is to ensure that we are fully involved in the process, so that is what is developed will meet the needs of all producers across Canada.

We will, of course, be sharing additional technical details about the proposed programs as they are brought forward, and will be looking for feedback and contributions from producers as well. In the meantime we trust that every dairy farmer will continue to be committed to Best Practices on their farms and be aware that an entire animal agriculture sector can be judged by any one of its farms.

As we are entering into the second half of August, I would like to take this opportunity to extend my best wishes for successful harvests to everyone.

RESEARCH REPORT

It has taken 10 long years to be able to finally tell you that the new research facility is officially up and running! The cows were moved into the new barn on July 22, three days after our open house. I would like to thank each and every one of you for your phenomenal support and your kind patience, had it not been for all of you, this huge project would have very likely never have happened.

As expected, there were a few minor glitches to overcome once the cows were moved in. The robotic milk unit is scheduled to start up in early September, the reason for the delay was to allow the cows and staff to get used to the new surroundings and I can tell you that they have adjusted very well. This milking system is very likely unique to North America, and perhaps the world, it is three separate milking systems (parlour, tie stall, and robot) that are all tied together at the collection site before the milk enters the final milk tank; this did create some “head scratching” to overcome the computer malfunctions that came about because of combining three separate systems.

If you recall many years ago we (all of our industry) told the university that if they wished to have our involvement there would be several conditions attached such as *must be built on campus, must offer public education (gallery and catwalk), must be environmentally friendly, and must explore “green technology”*, along with the usual requirements of student education and above all else, RESEARCH!

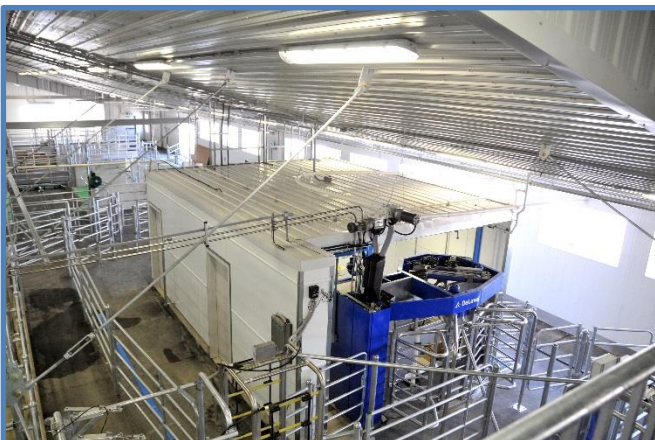
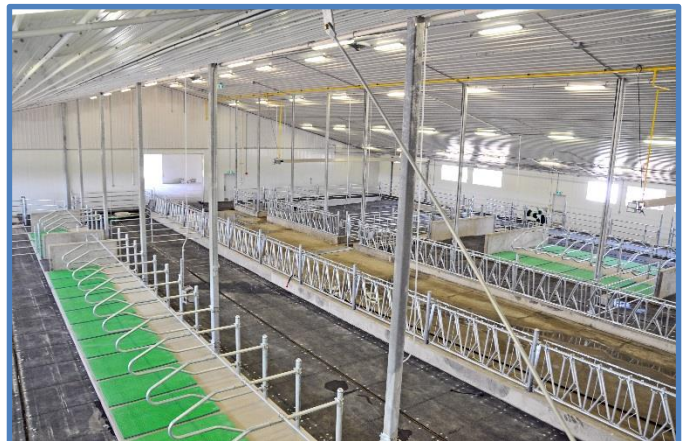
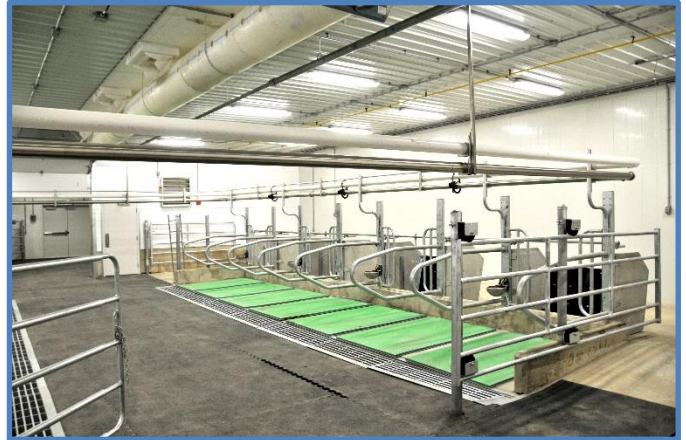
One of the greatest assets that the then DFS/MCB had at that time was Elvin Haupstein. Elvin had been involved in several research projects leading up to our partnership with the University of Saskatchewan and it was he who was the most insistent that this new barn be built on campus because of his involvement with the Prairie Swine Centre. Although the PSC is a great facility, it was always under-utilized because of its location. Elvin also insisted on being environmentally friendly; our rationale was that if we could have a barn full of cows in the centre of a city with a quarter million people to show these people how responsible farmers really are, it would make all of our lives a lot easier! We have not yet started on the “green technology” yet, but we will, money is the biggest hold-back at this time. Farmers are considered one of the most trusted professions by the citizens of Canada, and people like Elvin recognized the importance and responsibility that that “trust” brings to each and every one of us and he spent a good part of his life promoting agriculture to anyone he crossed paths with.

Once again, thank-you to all of you, without you we would not have achieved what we have! What “drove” Bernard Laarveld and myself for the last ten years was knowing that we had the entire dairy industry of Saskatchewan behind us as well as Saskcanola, Saskflax, etc.

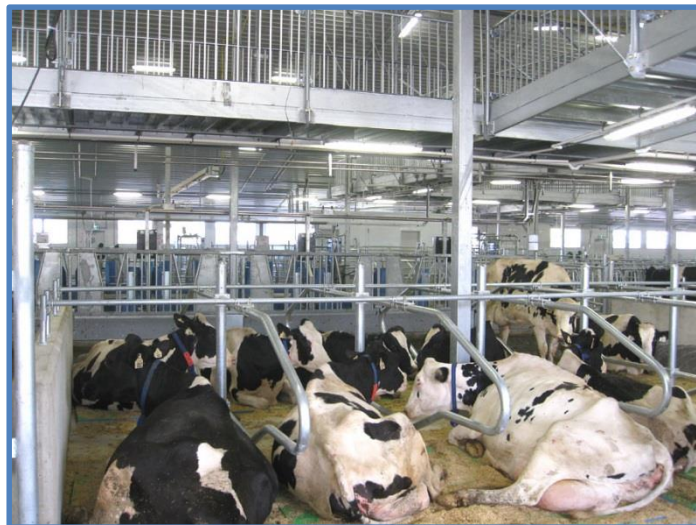
This research report is dedicated to Elvin Haupstein who was instrumental in the building of this project, Elvin was unable to attend the open house because of his failing health but you may have noticed my brother, Bob, taking pictures. Those pictures were delivered to Elvin so that he too could enjoy the fruits of his efforts.

-submitted by Jack Ford

RAYNER DAIRY RESEARCH AND TEACHING FACILITY



-photos by Bob Ford



-photos submitted by Dave Christensen

QUOTA EXCHANGE

There was no market-clearing price established for the August 2013 Quota Exchange.

The next Quota Exchange will be held on **September 15, 2013**. All offers to sell and bids to purchase quota through the Quota Exchange must be received at the SaskMilk office by midnight, **September 6, 2013**. SaskMilk recommends that offers and bids be submitted well in advance of the deadline date to ensure adequate time for corrections, if necessary.

When making bids on the Quota Exchange, the price on offers to sell quota is the minimum price that the producer is prepared to accept for that quota. Only if the market-clearing price is equal to or greater than the producer's minimum price will that producer qualify for participation in the Exchange. Conversely, the price on offers to purchase quota is the maximum price that the producer is prepared to pay for that quota. Only if the market-clearing price is equal to or less than the producer's maximum price will that producer qualify for participation in the Exchange. The clearing price is set at the price where the smallest difference exists between the accumulated volume offered for sale and the accumulated volume bid to purchase.

The results of the Quota Exchange are outlined in the following Table.

AUGUST 2013 QUOTA EXCHANGE RESULTS SUMMARY

Market Clearing Price per kilogram of butterfat	\$ 0.00
Daily Kilograms offered to Purchase	0
Kilograms offered to Sell	101.76
Kilograms sold	0
Number of Producers	
- offered to purchase	0
- purchased quota	0
- offered to sell	7
- sold quota	0

AUGUST 2013 QUOTA EXCHANGE CLEARING PRICE RESULTS

Price (\$/daily kg b.f.)	No. of Sellers	Cumulative Sellers	Daily Kgs b.f. offered for sale	Cumulative sales	Cumulative Sales less Cumulative purchases	Cumulative purchases	Daily Kgs b.f. offered to purchase	Cumulative Buyers	No. of buyers
\$28,350.00	1	1	1.00	1.00	1.00	0.00	0.00	0	0
\$30,500.00	1	2	2.26	3.26	3.26	0.00	0.00	0	0
\$31,000.00	1	3	8.50	11.76	11.76	0.00	0.00	0	0
\$31,500.00	1	4	25.00	36.76	36.76	0.00	0.00	0	0
\$32,000.00	2	6	40.00	76.76	76.76	0.00	0.00	0	0
\$32,500.00	1	7	25.00	101.76	101.76	0.00	0.00	0	0

*** Please contact Bev Solie at 306-949-6999 for inquiries dealing with quota management sheets, the Quota Exchange, for transfer credits, or with any other quota transactions.**

TRANSFER CREDIT SUMMARY REPORT

MONTH	# OF PRODUCERS TRANSFER IN	# OF PRODUCERS TRANSFER OUT	TOTAL KGS BUTTERFAT
July	7	7	6,610
August	8	9	7,748
September	17	15	16,499
October	22	16	17,681
November	25	22	21,887
December	27	23	29,882
January, 2013	14	17	13,158
February	16	15	10,369
March	19	18	14,543
April	14	15	8,912
May	11	10	6,139
June	16	11	12,221
July	14	10	8,560

PRIVATE TRANSFERS PROCESSED

MONTH	DAILY KILOGRAMS
Aug	211.70
Sept	54.93
Oct	30.20
Nov	0.00
Dec	25.24
Jan-2013	41.98
Feb	0.00
Mar	81.66
Apr	59.62
May	20.00
June	17.00
July	0.00

OVER QUOTA (OVER 5 DAYS) REPORT BY MONTH

MONTH	# OF PRODUCERS	KGS BUTTERFAT
July	5	441
August	4	403
September	7	367
October	8	1,035
November	13	2,403
December	15	2,847
January, 2013	19	4,848
February	17	3,436
March	21	4,621
April	11	1,303
May	11	846
June	10	655
July	8	2,058

SUMMARY REPORT OF CREDITS July, 2013 – 166 PRODUCERS

DAYS	# OF PRODUCERS	POSITIVE CREDITS ACCUMULATED (KGS OF BUTTERFAT)
+ 5	8	8,699
0 to + 5	38	12,886
TOTAL	46	21,585
DAYS	# OF PRODUCERS	NEGATIVE CREDITS ACCUMULATED (KGS OF BUTTERFAT)
-15	13	-24,720
-10 to -15	18	-32,388
-5 to -10	34	-40,098
0 to -5	55	-20,031
TOTAL	120	-117,237

LOST OPPORTUNITY REPORT

MONTH	# OF PRODUCERS	LOST OPPORTUNITY (KGS OF BUTTERFAT)
July	16	9,952
August	22	13,704
September	24	15,137
October	20	12,061
November	13	7,449
December	13	6,389
January, 2013	10	4,550
February	11	4,520
March	10	3,572
April	13	3,960
May	14	6,967
June	11	6,596
July	13	9,398

WEIGHTED AVERAGE COMPONENT TESTS & PRICES July, 2013

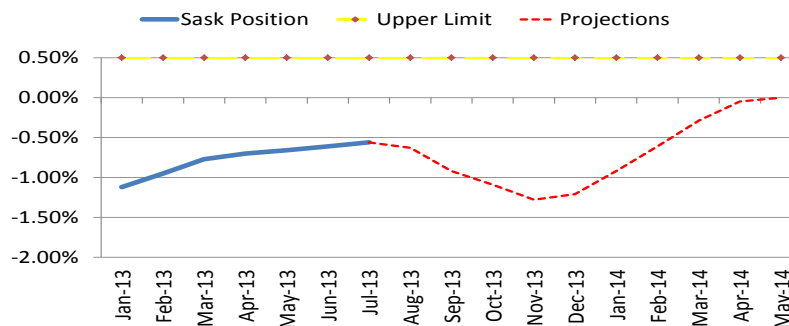
Components	Average Test	Price per kilogram Class 1 to 5
Butterfat	3.7696	11.713579
Protein	3.2395	8.713586
Other Solids	5.7129	1.235249

Based on the average component tests for the province, the average price received was **\$79.4394** per hectolitre. **The average butterfat price received per kilogram was \$21.01**

SASKATCHEWAN MILK POOL RESULTS July 2013

Milk Sale Revenue	\$ 14,259,491.42
Western Milk Pool	\$ 1,237,267.95
Plant of Last Resort Service	\$ (56,833.01)
Total Pool Value	\$ 15,439,926.36

SK Milk Production



Western Canadian Classic CREAMERS

Western Canada's premier junior dairy show is offering for sale these udderly irresistible creamers!

The creamers cost \$30, with \$20 going towards an orphanage in Kenya and \$10 going towards WCC.

Support two great causes and order yours today!

Contact B.J. Crosbie at 306-756-2784 or Ria Vanzessen at 306-254-4342 or tymen.ria@sasktel.net

Saskatchewan is hosting WCC this year in Moose Jaw from August 27th - September 1st!
The theme this year is "COWNADIAN FOOTBALL"

It is such a great event which was initiated to provide an opportunity for dairy youth to compete and develop skills that will serve them not only in their future agribusiness careers, but within any field of work they may pursue. The youth will gain skills in leadership, teamwork, public speaking, agriculture/dairy science, dairy fitting, dairy judging, showmanship and citizenship. **Plan to attend and cheer on team Saskatchewan!**

In July, Saskatchewan had a monthly CDC allocation of **730,741 kilograms** of butterfat. In the month of July, Saskatchewan production was **3,922** of butterfat **over** and cumulatively **under** by **-50,515 kilograms** of butterfat. On a percentage basis, Saskatchewan is **-0.56%** within our CDC allocation flexibility limits based on the Continuous Quota model. The -1.50% lower flexibility limit is in effect.

	(1) Monthly Total Production Kgs bf	(2) Total Monthly CDC Quota Allocation Kgs bf	(3) Monthly Over or (Under) Production Kgs bf col. 1 – 2 = 3	(4) Lower Flexibility Limit (1.5%) Kgs bf col. 9 * -1.5%	(5) Upper Flexibility Limit 1.0% Kgs bf col. 9 * 1.0%	(6) Cumulative Over or (Under) Production with limits Kgs bf	(7) Cumulative Over or (Under) Production with limits in - % col. 6 / 9	(8) Over Quota or (Lost Production Opportunity) Kgs bf	(9) Rolling 12 Month Total Quota Kgs bf
July-12	723,166	721,246	1,920	(135,331)	45,110	(33,997)	-0.38%	0	9,022,051
Aug-12	721,786	735,300	(13,514)	(135,181)	45,060	(47,511)	-0.53%	0	9,012,093
Sept-12	710,635	733,804	(23,169)	(135,045)	45,015	(72,158)	-0.80%	0	9,002,999
Oct-12	756,961	776,372	(19,411)	(135,079)	45,026	(91,611)	-1.02%	0	9,005,253
Nov-12	739,624	763,489	(23,866)	(135,022)	45,007	(115,477)	-1.28%	0	9,001,456
Dec-12	775,085	787,512	(12,427)	(134,977)	44,992	(126,691)	-1.41%	0	8,998,476
Jan-13	788,550	767,300	21,251	(134,846)	44,949	(100,685)	-1.12%	0	8,989,708
Feb-13	712,149	695,378	16,771	(134,400)	44,800	(84,357)	-0.94%	0	8,960,033
Mar-13	782,825	767,146	15,680	(134,368)	44,789	(69,000)	-0.77%	0	8,957,872
Apr-13	746,839	740,033	6,806	(134,442)	44,814	(62,444)	-0.70%	0	8,962,781
May-13	754,967	753,453	1,515	(134,427)	44,809	(60,815)	-0.68%	0	8,961,796
Jun-13	725,872	721,132	4,740	(134,402)	44,801	(54,515)	-0.61%	0	8,960,160
Jul-13	734,662	730,741	3,922	(134,525)	44,842	(50,515)	-0.56%	0	8,968,338

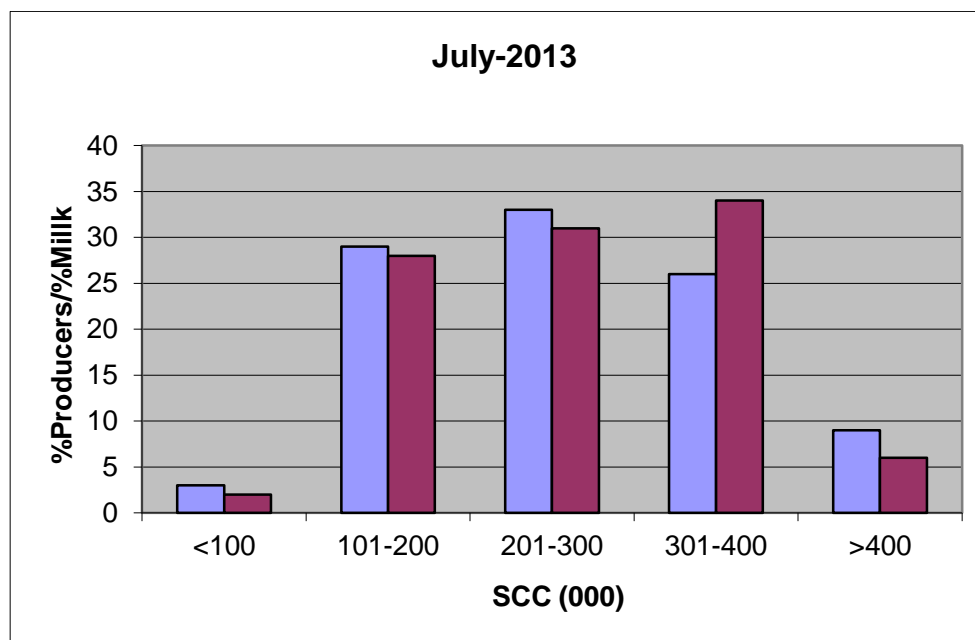
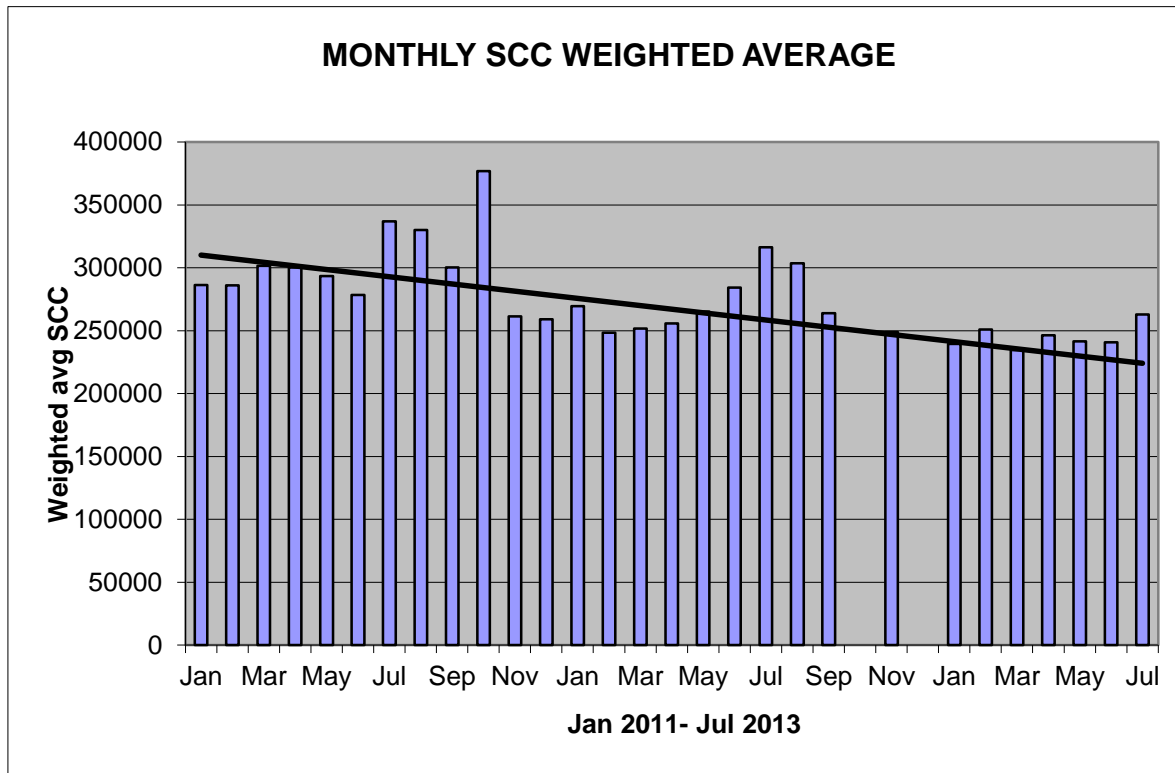
- (1) Monthly Production in Saskatchewan
- (2) Total Monthly Quota = Class 1 sales + Monthly MSQ + Carry Forward
- (3) Difference between the monthly production (1) and the total monthly quota (2)
- (4) The Lower Flexibility Limit is -1.5% of Rolling 12 Month Total Quota (9)
- (5) The Upper Flexibility Limit is 1.0% of Rolling 12 Month Total Quota (9)
- (6) Previous Month Cumulative Over or (Under) Production + Current Monthly Over or (Under) Production (capped at lower or upper limit if applicable)
- (7) Equal to Column (6) expressed as a percentage basis within the flexibility limits
- (8) Over Quota or (Lost production opportunity) outside of flexibility limits
- (9) Total Monthly CDC Quota Allocation for the previous 12 months

SCC LIMIT NOW 400,000

Effective January 1, 2013, the SCC limit has changed to 400,000. Penalties and violations will be applied based on the new limit.

The following graphs provide producers with an overview of the Provincial Somatic Cell Count weighted average on a monthly basis as well as a breakdown of the % of producers in each SCC level for the month of July 2013.

If you have any questions or comments you can contact: Deb Haupstein at 306-721-9486.



WCC 2013 SCHEDULE OF EVENTS
THEME “COWNADIAN FOOTBALL”
MOOSE JAW, SK
AUGUST 27-31

Monday, August 26

12 p.m. Calves move in

Tuesday August 27

6:30 – 8:00 a.m. Breakfast provided
12:00 noon Lunch provided
3:00 p.m. Interprovincial meeting
4:00 p.m. Process and move in clipping calves
6:00 p.m. Supper provided
7:00 p.m. Get acquainted night

Wednesday, August 28

6:30 – 8:00 a.m. Breakfast provided
9:00 a.m. Quiz
9:00 a.m. – 4:00 p.m. Stall competition
11:00 a.m. – 1:00 p.m. Clipping competition
1:00 p.m. Lunch provided
Clipping results after lunch
3:00 p.m. Presentation by Holstein Canada on genomics
6:00 p.m. Pizza and Paintball

Thursday, August 29

6:30 – 8:00 a.m. Breakfast provided
9:00 a.m. – 4:00 p.m. Stall competition
9:00 a.m. Judging classes and reasons
1:00 p.m. Lunch provided
3:00 p.m. Presentation by Holstein Canada on genomics
Free evening

Friday, August 30

6:30 – 8:00 a.m. Breakfast provided
9:00 a.m. – 4:00 p.m. Stall competition
9:30 a.m. Opening ceremonies
10:00 a.m. Showmanship classes
9:00 a.m. – 2:00 p.m. Concession available
Free evening

Saturday, August 31

6:30 – 8:00 a.m. Breakfast provided
9:00 a.m. – 3:00 p.m. Stall competition
10:00 a.m. Confirmation classes
9:00 a.m. – 2:00 p.m. Concession available
Closing ceremonies
7:00 p.m. Awards banquet and dance at the Golden Nugget on the exhibition grounds

INHIBITOR TEST STATIONS

SaskMilk has established a number of inhibitor test stations around the province. Producers needing to check their bulk tanks for inhibitors can take a sample to the test station closest to their location.

Charm test strips are available to test for:

Beta-Lactams- the Charm 3 SL3 Beta Lactam test strip tests for amoxicillin, ampicillin, ceftiofur, cephapirin, cloxacillin, and penicillin G

Tetracyclines- the Charm Tetracycline test strip tests for chlortetracycline, oxytetracycline and tetracycline.

Sulfas- the Charm Sulfa test strip tests for sulfacetamide, sulfachlorpyridazine, sulfadiazine, sulfadimethoxine, sulfadoxine, sulfaethoxy pyridazine, sulfamerazine, sulfamethazine, sulfamethizole, sulfamethoxazole, sulfamethoxy pyridazine, sulfapyridine, sulfaquinoxaline, sulfathiazole, and sulfisoxazole.

Test stations are located at the following locations:

1. Swift Current, SK - Agrifoods truck bay - 675 Cheadle Street West
Office 306-773-1991 or Rodger Ruf 306-741-3261
2. Harris, SK - Cairns Farm - Wes Cairns 306-665-4807
3. Star City, SK - Star City Colony - Reuben Tschetter 306-921-9381
4. Grenfell, SK - Jim Ross 306-697-2232
5. Yorkton, SK - Ford Dairy Farms Inc. - Bud and Margaret Ford 306-782-7240
6. Saskatoon, SK - Agrifoods Truck Bay - east of the Saputo plant receiving bay
lead hand - Jim or Clint 306-664-0202 after hours: 306-668-8135

Charm tests strips and Charm testers are now available for purchase through SaskMilk. Agrifoods is now carrying SNAP test kits for tetracyclines as well as beta lactams.

For further information you can contact: Deb Haupstein 306-721-9486



If You Can't Ship It - Test It!

BSE surveillance is still important and every animal tested makes a difference.

Support your cattle industry by having your 4-D (dead, diseased, dying or downer) cattle tested for BSE.

For more information, call the Canadian Food Inspection Agency at 1-877-727-5273.

Drug label directions: Does injection site volume impact food safety?

The CQM program states that producers must follow all label directions when administering a treatment to an animal. How far does this really go? Some drugs have a dosage per treatment of around 30ml; however, the label states that producers should not exceed 15ml/injection site. What is the rationale for this? Does injection site volume affect food safety?

The CQM Technical Committee researched the issue to try to determine if injection site volume is a food quality or food safety issue. The resulting answer was clear: injection site volume restrictions are directly related to food safety, and residue violations.

For example, the label for a Penicillin product states that you can administer 7ml/100kg of body weight intramuscularly to cattle once daily until 2 days after clinical signs disappear. Treatment must not exceed 5 days. The label also warns that you must not exceed 15ml per injection site for cattle. Dr. Dowling from the Canadian Global-Food Animal Residue Avoidance Database (cg-FARAD) stated that when she receives a residue violation case with Penicillin, the first question she asks is: how much did the producer inject per site? Too much drug injected in one spot is one of the leading causes of residues with this class of drug. In fact, Cg-FARAD recommends only 10ml/site, even if the label permits 15ml/site, to reduce the risk of residues (and penalties).

Dr. Dowling also emphasized that the preferred injection site is the neck, because it has many muscles that move around and aid in the absorption of the drug. The rump is the worst site because you have the risk of injecting the drug in between the two big muscles. If this happens, the drug does not get absorbed at all or is absorbed at a slow rate, which can prolong the withdrawal times.

Cattle react to the prick of the needle piercing the skin. If you need to inject a treatment into multiple sites, you do not have to pull the needle out all of the way for the second or third injection. You can inject 10 ml into one site, then pull the needle most of the way out and re-direct it at a 45° angle from the first site and inject another 10ml. This reduces the discomfort to the animal while still safely delivering the medication needed.

So, when administering medications to cattle, make sure you follow all of the label directions to ensure that you are properly treating the animal while maintaining food safety and avoiding residue violations and penalties.

REMINDER: FALL INCENTIVE DAYS

August: 2 days

September: 2 days

October: 1 day

November: 1 day

SaskMilk at the Regina Exhibition!

'Tis STILL the Season....

To talk to your MLA and MP!

We're in the home stretch of summer and the MLAs and MPs are still spending time in their home ridings, participating in events, and meeting with constituents. This is the perfect opportunity for producers to be Ambassadors to the industry by ensuring that your MPs and MLAs hear from you about the importance of the dairy industry to Canada!

(If you would like some key messages, speaking points, or statistics to have at your fingertips, just contact Joy Smith, SaskMilk's Manager of Policy and Communications at joy.smith@saskmilk.ca or #306-721-9482 and she will be happy to help you)



Did you know...?

Dairy farmers provide stability in the economy and support rural communities. The Canadian dairy sector's GDP contribution has risen from **\$15.2 Billion in 2009** to **\$16.2 Billion in 2011!**

Dairy Conference and AGM

Watch for information coming soon on the
Dairy Conference and SaskMilk AGM
to be held in Saskatoon on November 20th and 21st!

For the first time, SaskMilk's AGM will be held in conjunction with Saskatchewan Holstein Branch – we are excited about this joint conference and look forward to seeing everyone there!



September 18th
and 19th, 2013
at Morsan Farms,
Ponoka, Alberta

300 head are selling
including 20 breeding age
bulls for herd service
from these families:
Missy, Chaya, Chassity,
Fools Gold, Brasilia,
Cash, Ariel, Aubrey and more.
Complimentary lunch will
be provided at the sale.

Don't miss
this rare opportunity!

Managed by

Morris & Sandra Thalen and Family
Box 5, Site 15, RR1, Ponoka (Alberta) Canada T4J 1R1
Phone: 403 783-8712 · Cell: 403 783-1333



www.morsan.com

Genetics Manager: Greg Thalen
Cell.: 403 783-9870 · Office: 403 783-8784
Fax: 403 783-8733 · info@morsan.com

QUOTA LISTING or CLASSIFIED AD SERVICE

SaskMilk offers a free quota listing service as part of its Newsletter. Anyone wishing to sell or purchase quota and/or cows or miscellaneous dairy equipment is welcome to contact the SaskMilk office at (306) 949-6999. All prices and negotiations will be independent of SaskMilk.

Please note that ads will be posted in two issues and will then be removed unless SaskMilk is notified otherwise.

Classifieds

- **Selling: Registered Heifers, bred and unbred.** Contact: Sheldon Peifer (306) 862-7140
- If you need help on the farm during harvest, baling, silage or whatever field work is needed - for a week or months - call Matt at #306-491-2773
- Experienced relief milker wants to help you take a holiday with relief cow & calf care! A1 breeding equipment operator – take a holiday for a weekend, week, or month! Call Matt at #306-491-2773

SASKMILK BOARD OF DIRECTORS

Blaine McLeod – Chair
(306) 756-2775

rb.mcleod@sasktel.net

Melvin Foth – Vice Chair
(306) 225-4678

fvl@sasktel.net

David Entz
(306) 626-3300

davidentz3662@gmail.com

Jack Ford
(306) 328-4700

jackford@sasktel.net

Brad Kornelius
(306) 239-4200

bradkornelius@gmail.com

Isaac Klassen
(306) 249-4435

isaac00@sasktel.net

Jim Ross
(306) 697-2232

jimleeholsteins@sasktel.net

Juliann Lindenbach
(306) 771-2776

robella@sasktel.net

Sheldon Peifer
(306) 862-9470

dspeifer@sasktel.net

For further information, please contact the SaskMilk office.

444 McLeod Street

Regina, Saskatchewan S4N 4Y1

Telephone: (306) 949-6999

Fax: (306) 949-2605

Website: www.saskmilk.ca

Email: info@saskmilk.ca