



UPDATE

December 17, 2012

SaskMilk has a new website at www.saskmilk.ca



Please note the holiday hours for the SaskMilk office as follows:

Monday, December 24 th	8:00 a.m. to 12:00 noon
Tuesday, December 25 th	Office closed
Wednesday, December 26 th	Office closed
Thursday, December 27 th	8:00 a.m. to 5:00 p.m.
Friday, December 28 th	8:00 a.m. to 5:00 p.m.
Monday, December 31 st	8:00 a.m. to 12:00 noon
Tuesday, January 1 st	Office closed



MARK YOUR CALENDARS. THE NEXT DAIRY INFO DAY IS SCHEDULED FOR JANUARY 11, 2013 AT THE BRIAN KING CENTRE, WARMAN. MORE INFORMATION WILL FOLLOW.

Western Canadian Dairy Seminar

March 5 - 8, 2013

Red Deer, Alberta

Dairy Health is Dairy Wealth

<http://www.wcds.ca/>

Please see enclosed registration information

QUOTA EXCHANGE

The market-clearing price established for the December 2012 Quota Exchange was \$29,500.00.

The next Quota Exchange will be held on January 15, 2013. All offers to sell and bids to purchase quota through the Quota Exchange must be received at the SaskMilk office by midnight, January 6, 2013. SaskMilk recommends that offers and bids be submitted well in advance of the deadline date to ensure adequate time for corrections, if necessary.

When making bids on the Quota Exchange, the price on offers to sell quota is the minimum price that the producer is prepared to accept for that quota. Only if the market-clearing price is equal to or greater than the producer's minimum price will that producer qualify for participation in the Exchange. Conversely, the price on offers to purchase quota is the maximum price that the producer is prepared to pay for that quota. Only if the market-clearing price is equal to or less than the producer's maximum price will that producer qualify for participation in the Exchange. The clearing price is set at the price where the smallest difference exists between the accumulated volume offered for sale and the accumulated volume bid to purchase.

The results of the Quota Exchange are outlined in the following Table.

DECEMBER 2012 QUOTA EXCHANGE RESULTS SUMMARY

Market Clearing Price per kilogram of butterfat	\$ 29,500.00
Daily Kilograms offered to Purchase	20.00
Kilograms offered to Sell	73.66
Kilograms sold	20.00
Number of Producers	
- offered to purchase	2
- purchased quota	2
- offered to sell	6
- sold quota	3

DECEMBER 2012 QUOTA EXCHANGE CLEARING PRICE RESULTS

Price (\$/daily kg b.f.)	No. of Sellers	Cumulative Sellers	Daily Kgs b.f. offered for sale	Cumulative sales	Cumulative Sales less Cumulative purchases	Cumulative purchases	Daily Kgs b.f. offered to purchase	Cumulative Buyers	No. of buyers
\$29,500.00	3	3	45.66	45.66	25.66	20.00	0.00	2	0
\$29,900.00	1	4	20.00	65.66	45.66	20.00	0.00	2	0
\$30,500.00	2	6	8.00	73.66	53.66	20.00	20.00	2	2

*** Please contact Bev Solie at 306-949-6999 for inquiries dealing with quota management sheets, the Quota Exchange, for transfer credits, or with any other quota transactions.**

TRANSFER CREDIT SUMMARY REPORT

MONTH	# OF PRODUCERS TRANSFER IN	# OF PRODUCERS TRANSFER OUT	TOTAL KGS BUTTERFAT
November	25	27	27,199
December	23	22	22,169
January, 2012	18	16	22,543
February	18	16	13,595
March	16	16	8,585
April	30	18	27,232
May	13	12	12,700
June	11	12	9,467
July	7	7	6,610
August	8	9	7,748
September	17	15	16,499
October	22	16	17,681
November	25	22	21,887

OVER QUOTA (OVER 10 DAYS) REPORT BY MONTH

MONTH	# OF PRODUCERS	KGS BUTTERFAT
November	3	329
December	4	1,032
January, 2012	10	2,606
February	11	4,724
March	11	3,154
April	27	9,368
May	22	3,358
June	9	1,120
July	5	441
August	4	403
September	7	367
October	8	1035
November	13	2403

SUMMARY REPORT OF CREDITS November, 2012 – 169 PRODUCERS

DAYS	# OF PRODUCERS	POSITIVE CREDITS ACCUMULATED (KGS OF BUTTERFAT)
+10	0	0
+ 5 to +10	14	7,145
0 to + 5	25	6,037
TOTAL	39	13,182
DAYS	# OF PRODUCERS	NEGATIVE CREDITS ACCUMULATED (KGS OF BUTTERFAT)
-20	0	0
-15 to -20	13	-18,151
-10 to -15	38	-92,410
-5 to -10	44	-53,299
0 to -5	35	-12,923
TOTAL	130	-176,783

LOST OPPORTUNITY REPORT

MONTH	# OF PRODUCERS	LOST OPPORTUNITY (KGS OF BUTTERFAT)
November	18	5,354
December	10	2,240
January, 2012	6	1,106
February	4	1,487
March	8	3,854
April	13	9,776
May	10	5,501
June	11	6,523
July	16	9,952
August	22	13,704
September	24	15,137
October	20	12,061
November	13	7,449

WEIGHTED AVERAGE COMPONENT TESTS & PRICES November, 2012

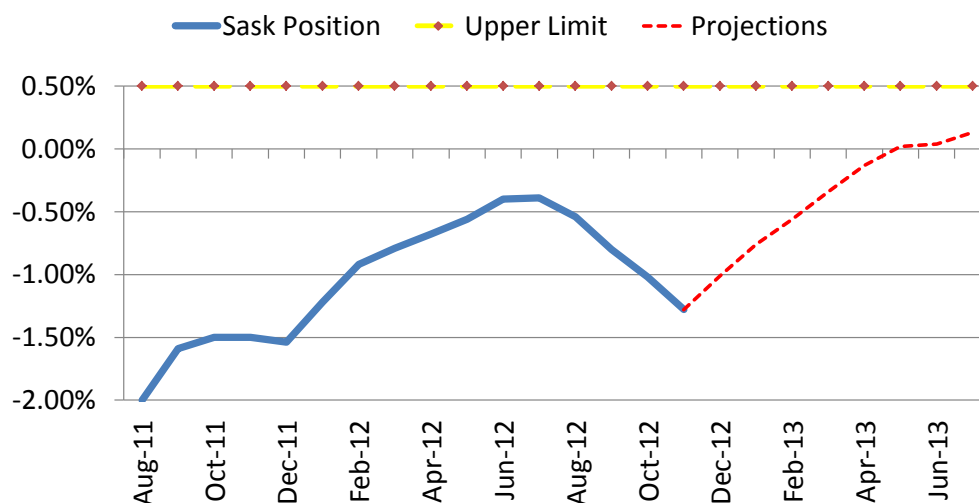
Components	Average Test	Price per kilogram Class 1 to 5
Butterfat	4.0286	11.480208
Protein	3.4328	8.480208
Other Solids	5.6901	1.279029

Based on the average component tests for the province, the average price received was **\$82.6375** per hectolitre. **The average butterfat price received per kilogram was \$20.45.**

SASKATCHEWAN MILK POOL RESULTS November 2012

Milk Sale Revenue	\$ 14,596,897.14
Western Milk Pool	\$ 580,872.06
Plant of Last Resort Service	\$ <u>(55,219.61)</u>
Total Pool Value	\$ 15,122,549.59

SK Milk Production



In October, Saskatchewan had a monthly CDC allocation of **763,489 kilograms** of butterfat. In the month of October, Saskatchewan production was -19,411 of butterfat under and cumulatively **under by -115,477 kilograms** of butterfat. On a percentage basis, Saskatchewan is **-1.28%** within our CDC allocation flexibility limits based on the Continuous Quota model. The -1.50% lower flexibility limit is in effect.

	(1) Monthly Total Production Kgs bf	(2) Total Monthly CDC Quota Allocation Kgs bf	(3) Monthly Over or (Under) Production Kgs bf col. 1 – 2 = 3	(4) Lower Flexibility Limit (1.5%) Kgs bf col. 9 * -1.5%	(5) Upper Flexibility Limit 1.0% Kgs bf col. 9 *1.0%	(6) Cumulative Over or (Under) Production with limits Kgs bf	(7) Cumulative Over or (Under) Production with limits in - % col. 6 / 9	(8) Over Quota or (Lost Production Opportunity) Kgs bf	(9) Rolling 12 Month Total Quota Kgs bf
Nov-11	754,256	767,286	(13,030)	(134,481)	44,827	(134,481)	-1.50%	(12,811)	8,965,400
Dec-11	786,189	790,598	(4,409)	(134,551)	44,850	(138,320)	-1.54%	(570)	8,970,053
Jan-12	800,269	771,312	28,987	(134,755)	44,918	(109,363)	-1.22%	0	8,983,638
Feb-12	752,035	725,489	26,546	(135,400)	45,133	(82,817)	-0.92%	0	9,026,671
Mar-12	781,420	769,585	11,835	(135,588)	45,196	(70,982)	-0.79%	0	9,039,176
Apr-12	744,524	735,251	9,273	(135,553)	45,184	(61,708)	-0.68%	0	9,036,834
May-12	765,359	754,299	11,060	(135,605)	45,202	(50,772)	-0.56%	0	9,040,303
June-12	737,921	723,028	14,893	(135,565)	45,188	(35,917)	-0.40%	0	9,037,685
July-12	723,166	721,246	1,920	(135,331)	45,110	(33,997)	-0.38%	0	9,022,051
Aug-12	721,786	735,300	(13,514)	(135,181)	45,060	(47,511)	-0.53%	0	9,012,093
Sept-12	710,635	733,804	(23,169)	(135,045)	45,015	(72,158)	-0.80%	0	9,002,999
Oct-12	756,961	776,372	(19,411)	(135,079)	45,026	(91,611)	-1.02%	0	9,005,253
Nov-12	739,624	763,489	(23,866)	(135,022)	45,007	(115,477)	-1.28%	0	9,001,456

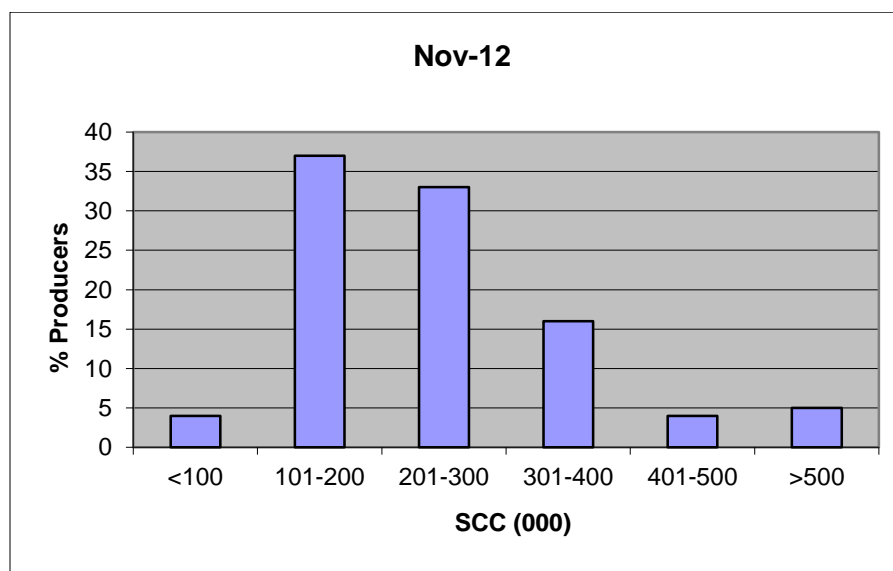
- (1) Monthly Production in Saskatchewan
- (2) Total Monthly Quota = Class 1 sales + Monthly MSQ + Carry Forward
- (3) Difference between the monthly production (1) and the total monthly quota (2)
- (4) The Lower Flexibility Limit is -1.5% of Rolling 12 Month Total Quota (9)
- (5) The Upper Flexibility Limit is 1.0% of Rolling 12 Month Total Quota (9)
- (6) Previous Month Cumulative Over or (Under) Production + Current Monthly Over or (Under) Production (capped at lower or upper limit if applicable)
- (7) Equal to Column (6) expressed as a percentage basis within the flexibility limits
- (8) Over Quota or (Lost production opportunity) outside of flexibility limits
- (9) Total Monthly CDC Quota Allocation for the previous 12 months

SCC LIMIT CHANGING TO 400,000

Effective August 1, 2012, the SCC limit is changing to 400,000. From August 1, 2012 until December 31, 2012 violation of the new limit will be indicated by a Warning. Penalties will be applied according to the new limit starting January 1, 2013.

The following graphs provide producers with an overview of the Provincial Somatic Cell Count weighted average on a monthly basis as well as a breakdown of the % of producers in each SCC level for the month of July.

If you have any questions contact: Deb Haupstein at 306-721-9486.



Dairy Herd Health Screening Initiative

SaskMilk has started a screening initiative to determine the production limiting disease prevalence in Saskatchewan dairy herds.

Bulk milk samples were taken from all herds in the province and tested for antibodies for MAP and Leukosis. PCR tests were used to detect the presence of BVD and contagious mastitis. All producers who wanted them, have received their results for Johne's, Leukosis, BVD and contagious mastitis.

Collection of 6 environmental fecal samples from manure concentration, manure storage and cow concentration areas for culture, isolation and molecular typing of MAP organisms is underway. The goal is to have all farms sampled by early in the New Year.

If you have any questions or concerns regarding this study please contact:
Deb Haupstein at 306-721-9486

INHIBITOR TEST STATIONS

SaskMilk has established a number of inhibitor test stations around the province. Producers needing to check their bulk tanks for inhibitors can take a sample to the test station closest to their location.

Charm test strips are available to test for:

Beta-Lactams- the Charm 3 SL3 Beta Lactam test strip tests for amoxicillin, ampicillin, ceftiofur, cephalixin, cloxacillin, and penicillin G

Tetracyclines- the Charm Tetracycline test strip tests for chlortetracycline, oxytetracycline and tetracycline.

Sulfas- the Charm Sulfa test strip tests for sulfacetamide, sulfachlorpyridazine, sulfadiazine, sulfadimethoxine, sulfadoxine, sulfaethoxypyridazine, sulfamerazine, sulfamethazine, sulfamethizole, sulfamethoxazole, sulfamethoxypyridazine, sulfapyridine, sulfaquinoxaline, sulfathiazole, and sulfisoxazole.

Test stations are located at the following locations:

1. Swift Current, SK. - Agrifoods truck bay- 675 Cheadle Street West
Office 306-773-1991 or Rodger Ruf 306-741-3261
2. Harris, SK.- Cairns Farm – Wes Cairns - 306-665-4807
3. Star City, SK- Star City Colony- Reuben Tschetter- 306-921-9381
4. Grenfell, SK. - Jim Ross- 306-697-2232
5. Yorkton, SK.- Ford Dairy Farms Inc.- Bud and Margaret Ford- 306-782-7240
6. Saskatoon, SK.-Agrifoods Truck Bay-east of the Saputo plant receiving bay
lead hand- Jim or Clint – 306-664-0202 after hours: 306-668-8135

Charm tests strips and Charm testers are now available for purchase through SaskMilk. Agrifoods is now carrying SNAP test kits for tetracyclines as well as beta lactams.

For further information you can contact: Deb Haupstein 306-721-9486

What's new on your producer statement?

On the bottom of the second page producers will see their individual farm monthly and rolling 12-month blend prices based on per hectolitre rate and per kilogram of butterfat. Producers will have their farm blend based on Gross Revenue, Total Deductions and Net Revenue for the current month and rolling 12-month basis.

December 2012 Research Report

I hope this note finds everyone well as we head into winter, I trust everybody has their feed requirements looked after.

The new dairy facility at the university is nearing completion and the cows could be moving into their new home as early as the end of January.

I want to focus on our next Dairy Info Day, mark January 11th on your calendars. We are once again holding it at the Brian King Centre in Warman. The feedback from last year's Dairy Info Day was very useful for picking topics and putting together this year's program. We hope that we have put together a full day of good information, the opportunity to visit with your fellow milk producers, and the opportunity to help direct future Dairy Info Days and future research initiatives that will help our industry. Based on your feedback, we are targeting three main areas of interest. Firstly, we will be talking about hoof problems, what we have learned in the last year, what advice they can offer that may be helpful and what future directions we may be able to take. We will also talk about Somatic Cell Counts because we are now at 400,000 as a maximum acceptable limit. Based on last year's feedback we will review recent research results and different silage options for you to consider. There will be an update on the glycerol/high oil canola meal study. The College of Engineering along with the Ministry of Agriculture will cover manure management, what is manure worth in the field, is manure a viable alternate energy option, what are the rules and regulations around the spreading of manure. We will have a company give a brief presentation on feed supplements with Omega 3 fatty acids. I believe that we may have a real opportunity for the development of a value added product with not too much of a time or financial investment required. There will be some other topics of interest also presented.

We intend to also have a "trade fair" as part of the day. Based on last year's feedback we will allow more time to visit with our industry partners and this year we will have their booths set up in a different room.

I would ask that if you are intending to come to the Dairy Info Day that you give Deb Haupstein a call and let her know how many from your farm will be attending, we need this information for the caterer. Deb's number is (306) 721-9486. A full program will be sent out once it is completed.

I hope you all have a great holiday season and I hope to see you all on the 11th in Warman!

Jack Ford

Code of Practice

3.4 Veterinary Care and Herd Health Management Programs

Animal health is an integral component of animal welfare. Producers should maintain the health of their animals through appropriate nutrition, appropriate housing, disease prevention, detection, and treatment. Veterinarians should play a key role in helping producers to meet these animal health obligations.

REQUIREMENTS

Producers must establish a working relationship with a practicing veterinarian (VCPR).

RECOMMENDED BEST PRACTICES

a. work with the herd veterinarian to develop a Herd Health Management and Biosecurity Program

b. have a Herd Health Management Program which includes the following components:

- vaccination protocols;
- observation of all animals for injury or signs of disease
- complete, accurate, and reliable record keeping;
- protocols for the prevention, detection, and treatment of disease or injury, including lameness;
- protocols for pest control;
- training programs and protocols for animal handlers;
- individual animal identification and treatment records;
- ability to isolate new arrivals to the herd;
- calving protocols.

Source: Dairy Farmers of Canada

BSE surveillance is still important for Saskatchewan cattle industries

by Wendy Wilkins, DVM, PhD
Disease Surveillance Veterinarian
Livestock Branch

Bovine spongiform encephalopathy (BSE) is a topic that cattle producers in western Canada have not heard much about lately. This is because BSE is rarely found in Canada and market access has returned to pre-BSE levels. Most producers do not worry about it anymore and many believe that it is not an issue of concern to them.

BSE affects all cattle producers. To sell any product, market access is needed. For the cattle industry to have market access, a low risk of BSE in Canada needs to be demonstrated. To demonstrate low risk of BSE, Canada needs to have a strong BSE surveillance program. Most importantly, to have a strong BSE surveillance program, producers need to be on board.

BSE surveillance is needed to make sure Canada's BSE control measures are working. BSE test results show that cases of BSE have been decreasing over the years; eventually, the goal is to show the absence of BSE entirely, and prove the effectiveness of control measures.

Canada has a "controlled" BSE risk status. This means that even though BSE has been found in Canada in the past, proper surveillance, feed bans, reporting and education programs are in place. These activities must continue in order to maintain, and eventually improve, Canada's BSE risk status. Without these activities, Canada's BSE status may be downgraded, resulting in loss of international market access. Each animal that you have tested for BSE contributes to open market access for Canada.

Cattle over 30 months of age that are dead, down, dying or diseased are eligible for testing. Producers receive \$75 from the CFIA for each eligible sample submitted. Call your veterinarian or the nearest CFIA office if you have an animal that meets any of the testing criteria. You can also call the CFIA's BSE surveillance hotline at 1-877-727-5273.

For more information:

- Call the BSE surveillance hotline at 1-877-727-5273.

Canadian Feed Research Centre (CFRC – UofS North Battleford Feedmill)

The much anticipated Canadian Feed Research Centre (CFRC) began construction in September 2012. The warehouse space in the existing commercial feedmill is the site of the new "Pilot Scale Line" (PSL). The PSL runs at ~ 2 tonne/hour and has several pieces of manufacturing equipment not usually found in commercial facilities. The existing commercial line has been renamed the "Industrial Scale Line" (ISL). The ISL operates at ~ 20 tonne/hour and is available for research, as well as under license for commercial operations by Cargill Animal Health Ltd. A website has been created for the CFRC at the following URL:

<http://agbio.usask.ca/CFRC>. The website describes the equipment available on both the PSL and ISL, a general description of the research that can occur at the facility, descriptions of how to access the CFRC as well as construction photos. The CFRC website construction photos will be updated monthly – similar to the new Dairy Research Facility <http://agbio.usask.ca/dairy-research-teaching-facility-construction>. The website will be updated with research pricing and technology transfer materials as those materials become available.

An Agriculture Council of Saskatchewan CAAP funded grant "Industrial Research Capacity Development of the CFRC" was approved in June 2013. SaskMilk is the proponent of this grant. In partnership with SaskPork, Chicken Farmers of Saskatchewan, SaskEgg, SK Cattleman's Association, Prairie Oat Growers and the Canadian Canola Council, SaskMilk and the Feeds Innovation Institute are developing technology transfer materials describing the manufacturing equipment at the CFRC, use and links between manufacturing specifications and animal performance, with the goal of increasing industrial research at the CFRC. Articles describing this work will be included in this newsletter throughout 2013.

Colleen Christensen, PhD, PAg

Executive Director
Feeds Innovation Institute
feeds.innovation.usask.ca
twitter: Christensen741
1-306-966-4154

Recognition for College of Agriculture and Bioresources Professor Emeritus

A reception was held December 11, 2012 to recognize five College of Agriculture and Bioresources Professor Emeritus that were recognized in 2012. Dr. Dave Christensen was awarded with the Queen's Diamond Jubilee Medal for his contributions to dairy nutrition in Canada and Internationally. Dr. Red Williams was also awarded the Queen's Diamond Jubilee Medal for his work in beef nutrition in Canada and Internationally. Finally, Dr. Bryan Harvey, former Crop Development Centre barley breeder, was recognized for his contributions to barley breeding as well as his international volunteer work with the FAO and UN organizations. Dr. Brian Rossnagel was awarded with the Saskatchewan Order of Merit for his contributions as a former Crop Development Centre barley and oat breeder. Dr. Rossnagel developed 94 oat and barley varieties that were commercialized and grown on > 50 million acres across Western Canada. In addition, Dr. Graham Simpson, former head of Plant Sciences was inducted into the Saskatchewan Agriculture Hall of Fame. Dr. Simpson was the researcher responsible for the creation of the Crop Development Centre, which has commercialized almost 400 crop varieties in 40 years, as well as being responsible for the development of the Phytotron in the College. The Phytotron is the largest facility of its kind in the world with more plant environmental growth chambers centrally administered than any other facility.

Colleen Christensen, PhD, PAg

Executive Director

Feeds Innovation Institute

feeds.innovation.usask.ca

twitter: Christensen741

1-306-966-4154



Catons Ltd. is seeking a Service Technician for its Saskatoon location. Job responsibilities include installation and service of high-tech dairy automation equipment, including robotics. Qualified applicants will have a dairy background with preference given to those with knowledge of electrical systems and welding experience. Interested parties reply with resume to mike.walker@catons.ca.

Voluntary Livestock Traceability Rebate Funding Deadline January 31, 2013

The Saskatchewan Voluntary Livestock Traceability Rebate will provide rebates of up to 70 per cent of eligible costs for the purchase and/or lease of Radio Frequency Identification (RFID) handheld and panel readers. Funding is also available for training, RFID software, panel RFID installation, facility modifications relating to the use of RFID readers and ultra-rugged computers with a rating of IP67.

Cattle, bison, sheep, goat, hog and cervid producers, feedlots, backgrounders, veterinary clinics, meat processors, assembly yards, privately managed community pastures, fairs and exhibitions are eligible for a 70 per cent rebate, to a maximum rebate of \$50,000 per facility for all eligible items combined. Of this amount, a maximum of \$5,000 can be used for the purchase or lease of new handheld RFID readers.

Saskatchewan's overall traceability initiative also includes awareness and education through information and workshops; development of pilot projects at auction marts and/or feedlots; and financial support for the Canadian Cattle Identification Agency to establish a presence in Saskatchewan to assist producers and to create awareness of traceability initiatives in the province.

For more information on the Saskatchewan Voluntary Livestock Traceability Program, please call 1-877-874-5365 or go to the website at:
<http://www.agriculture.gov.sk.ca/Traceability>

For information on Saskatchewan Agriculture's overall traceability initiative, contact Paul Marciniak (306) 933-6888.

PLEASE NOTE: THE DEADLINE FOR THIS FUNDING IS JANUARY 31, 2013.

**GALLAGHER AND PIONEER COOP IN HERBERT ARE HOLDING AN
INFORMATION SESSION AT THE LIONS HALL, HERBERT, SK, ON
JANUARY 9, 2013 AT 10:00 AM.**

FOR FURTHER INFORMATION ON THIS MEETING YOU CAN CONTACT:

DAN HOFER, SOUTHLAND COLONY, 306-784-2606 ext, 314



ATTENTION DAIRY PRODUCERS

Do you know that if you have purchased ear tags for your dairy cattle that you are a member of the Saskatchewan Cattlemen's Association?

Have you registered for Saskatchewan's Premier Beef Event? The Saskatchewan Beef Industry Conference 2013 is scheduled for the Saskatoon Inn on January 23rd – 25th and includes:

- Beef & Forage Symposium
- Trade Show
- Industry Meetings, including the SCA AGM at 3 p.m. on January 24th in the Canadian Room
- Business Networking and Entertainment

For more information or to register, visit www.saskbeefconference.com or contact the conference coordinator by phone at (306) 731-7610 or email: shannon.mcarton@sasktel.net.

Book a conference-rate room at the Saskatoon Inn (306)242-1440 or the Heritage Inn (306) 665-8121 on or before **Friday, December 21st**. Rooms are going quickly so call today!

HayEast 2012

Mennonite Disaster Service (MDS) Units in Saskatchewan and Ontario together with several Ag Producer Groups have launched **HayEast 2012**, to assist farmers in drought-stricken areas of Eastern Ontario and the US Midwest.

Drought has severely impacted the livestock and dairy sector, not only creating a shortage of hay, but forcing farmers to feed hay stored for winter to their livestock now. MDS is actively working at moving surplus Saskatchewan hay to drought stricken areas. MDS Ontario is working collaboratively with other organizations to ensure broad awareness in drought affected areas, to be positioned to receive hay, and to distribute it in the most effective way possible.

Can you help? Farmers willing to donate hay should contact Ike Epp via e-mail at birwood@littleloon.ca or by phone: (306) 342-4344. Anyone else wishing to support this cause is invited to donate financial resources to help defray the cost of moving surplus hay. Donations can be sent to the MDS Region V office, 6A-1325 Markham Rd Winnipeg, MB, R3T 4J6, or any MDS Unit.

www.mds.mennonite.net
www.hayeast2012.com

QUOTA LISTING SERVICE

SaskMilk offers a free quota listing service as part of its Newsletter. Anyone wishing to sell or purchase quota and/or cows or miscellaneous dairy equipment is welcome to contact the SaskMilk office at (306) 949-6999. All prices and negotiations will be independent of SaskMilk.

Please note that ads will be posted in two issues and will then be removed unless SaskMilk is notified otherwise.

- Waterbeds for sale. Contact Martin @ (306) 741-0612
- For Sale: Cows & Quota, approximately 33.5 kgs. For more information call Murray or Maureen Werner, (306) 792-4550
- Quota for Sale. (306) 862-7140.
- 18 Heifers for Sale – between 6 months to Springers. Phone (306) 220-4781 Willie (Cell).

SASKMILK BOARD OF DIRECTORS

Blaine McLeod – Chair
(306) 756-2775
rb.mcleod@sasktel.net

Melvin Foth – Vice Chair
(306) 225-4678
fvl@sasktel.net

David Entz
(306) 741-0632
davidentz3662@gmail.com

Jack Ford
(306) 328-4700
jackford@sasktel.net

Brad Kornelius
(306) 239-4200
brad.crystal@yourlink.ca

Isaac Klassen
(306) 249-4435
isaac00@sasktel.net

Jim Ross
(306) 697-2232
jimleeholsteins@sasktel.net

Juliann Lindenbach
(306) 771-2776
robella@sasktel.net

Sheldon Peifer
(306) 862-9470
dspeifer@sasktel.net

For further information, please contact the SaskMilk office.

444 McLeod Street
Regina, Saskatchewan S4N 4Y1
Telephone: (306) 949-6999
Fax: (306) 949-2605
Website: www.saskmilk.ca
Email: info@saskmilk.ca